

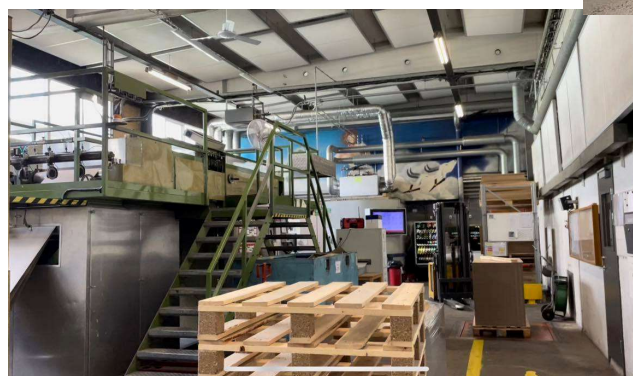
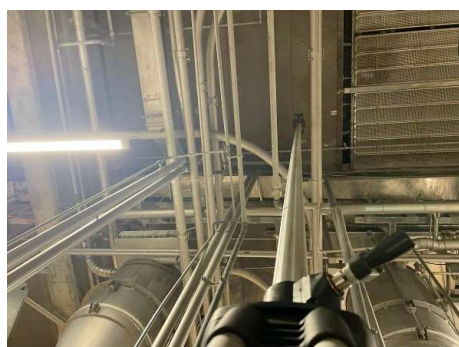
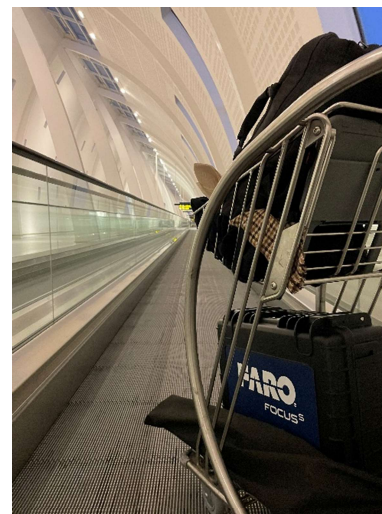
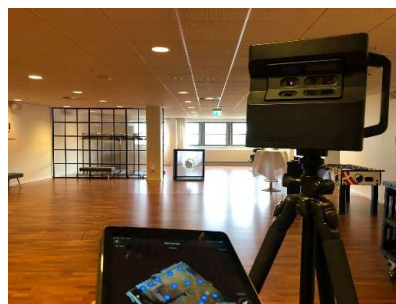
3D Scanning

Lancering Seminar 2023

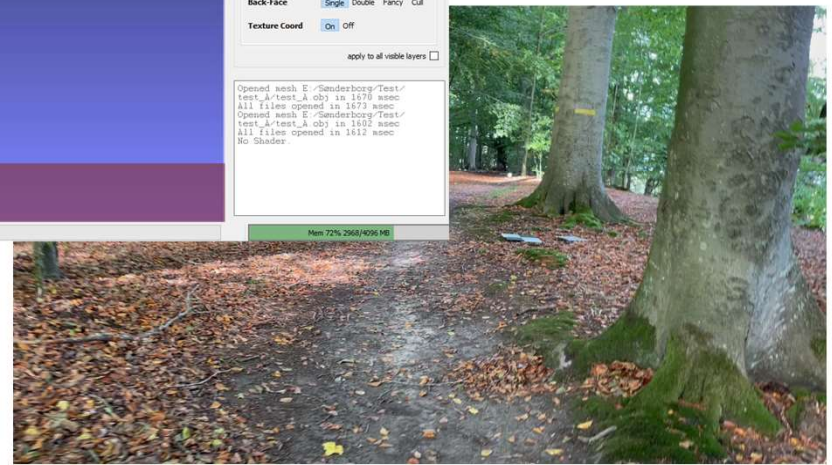
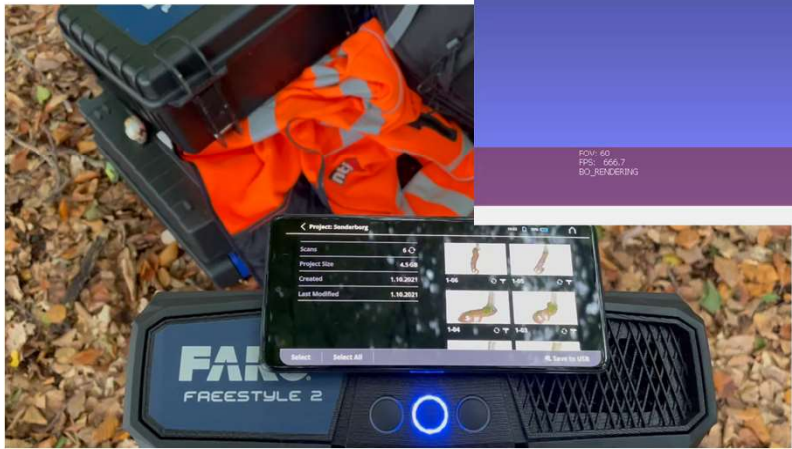
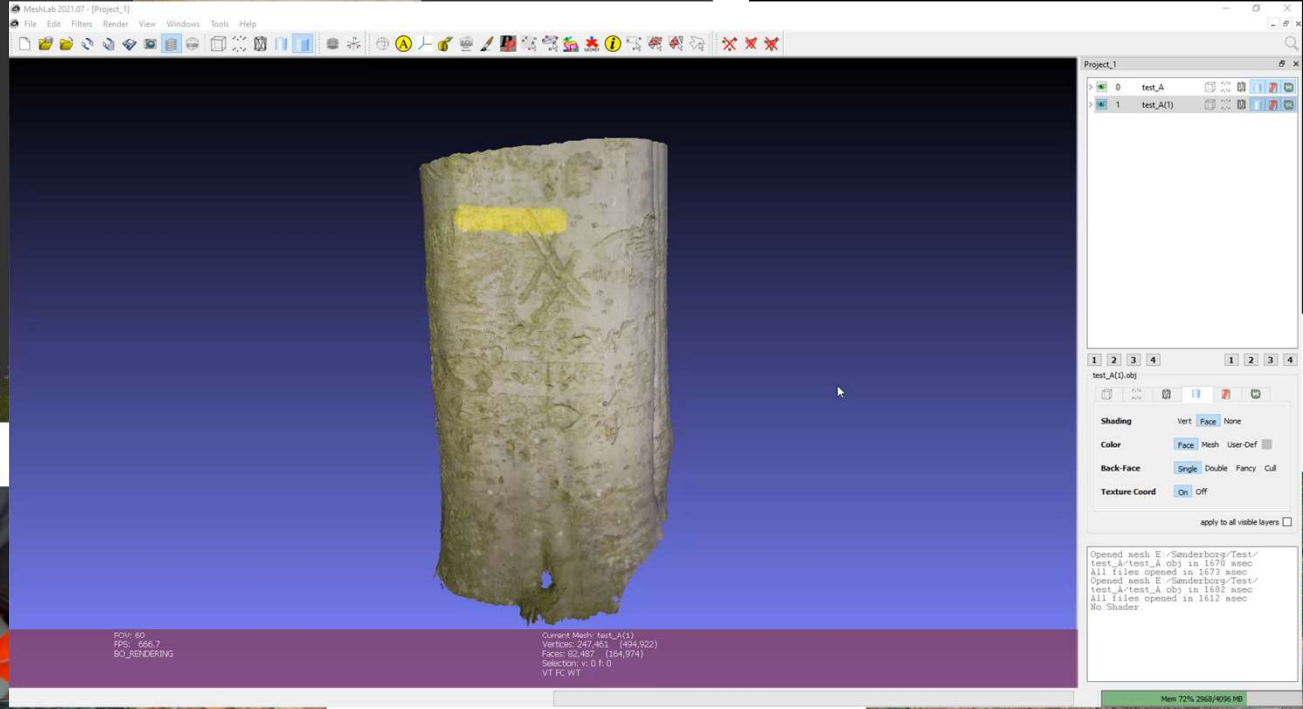
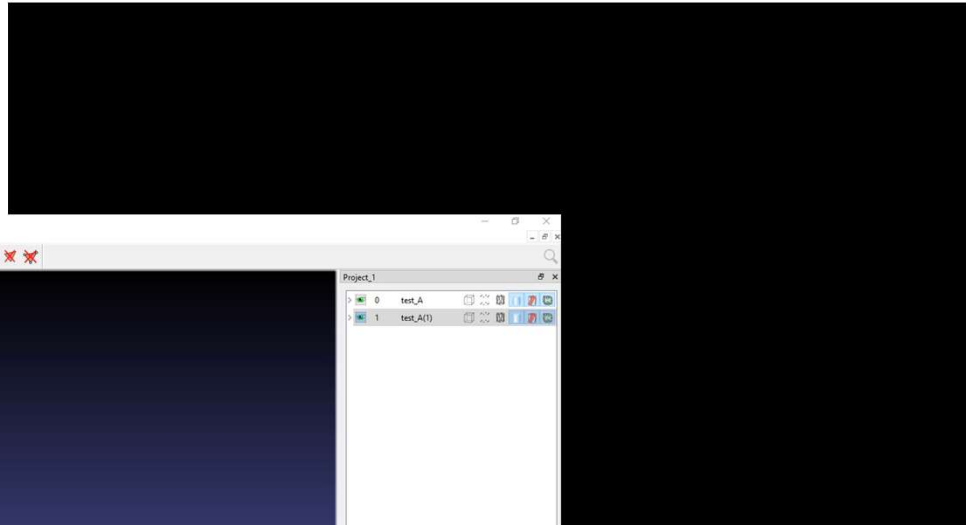
System Konsulent - Bjarne Blaabjerg

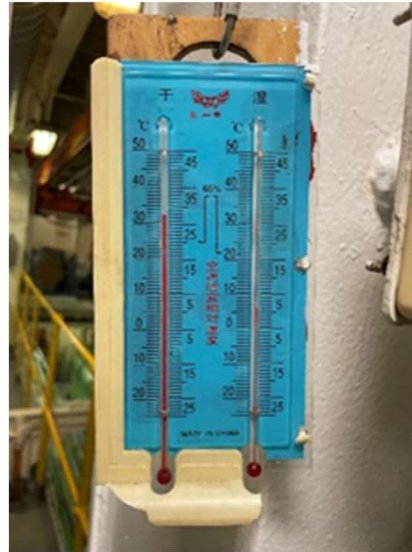
- AutoCAD
- Inventor
- Navisworks
- Revit
- Recap Pro
- Faro Software
- Faro Scanner



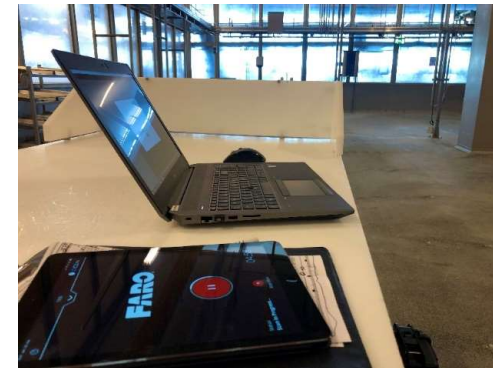
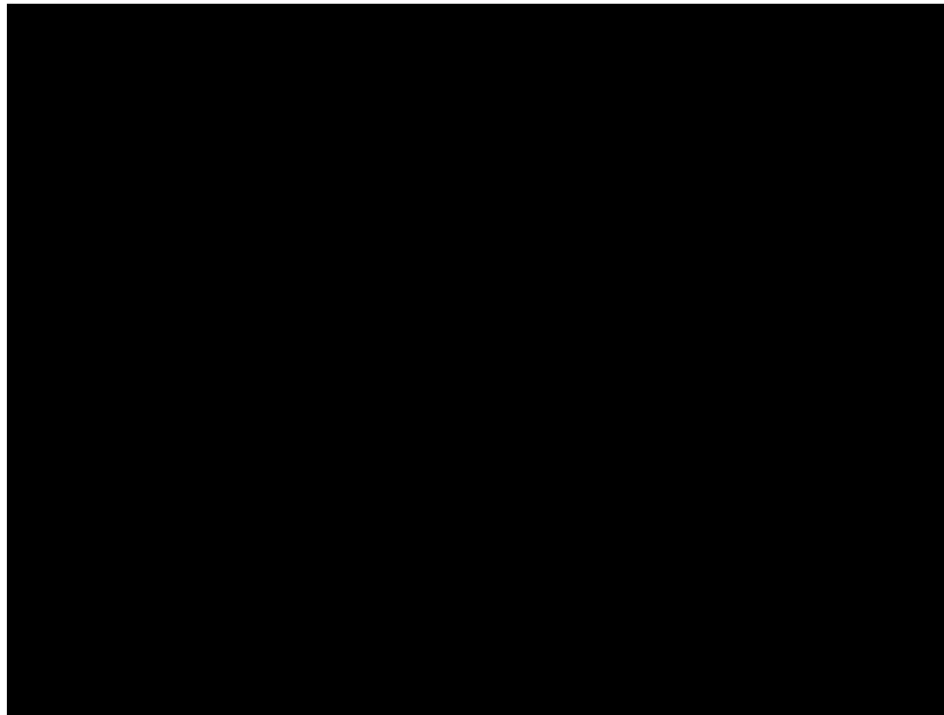
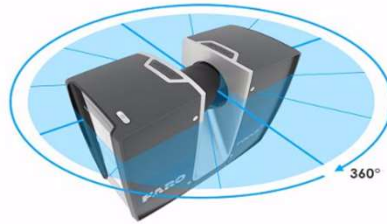








FARO Focus S150



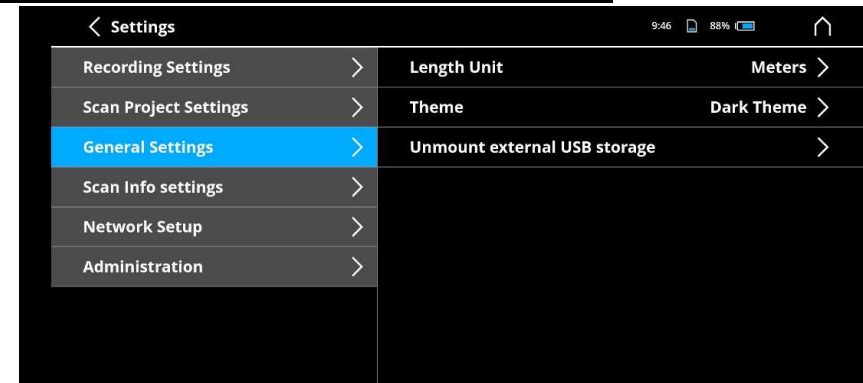
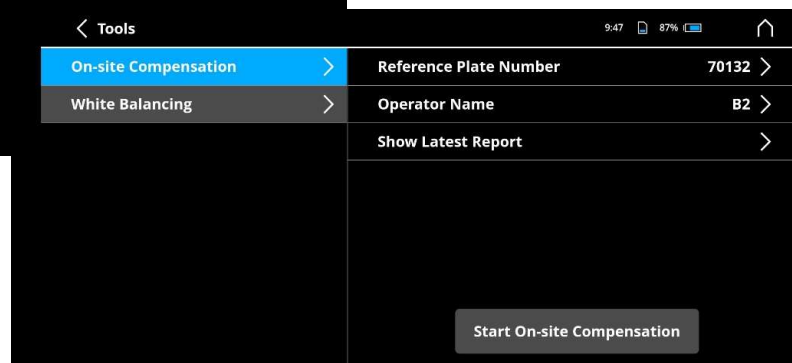
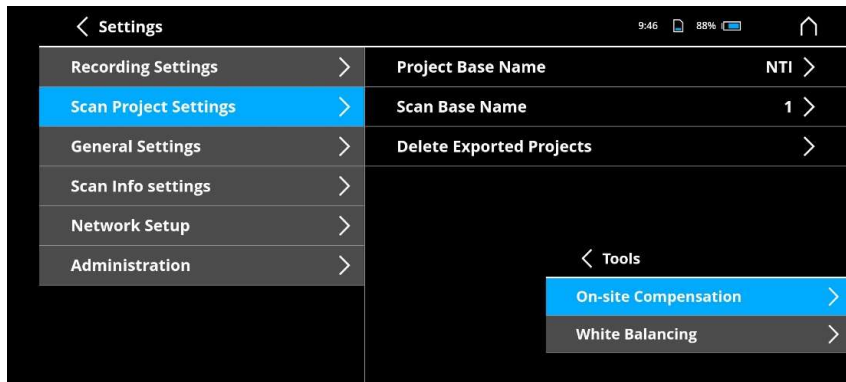
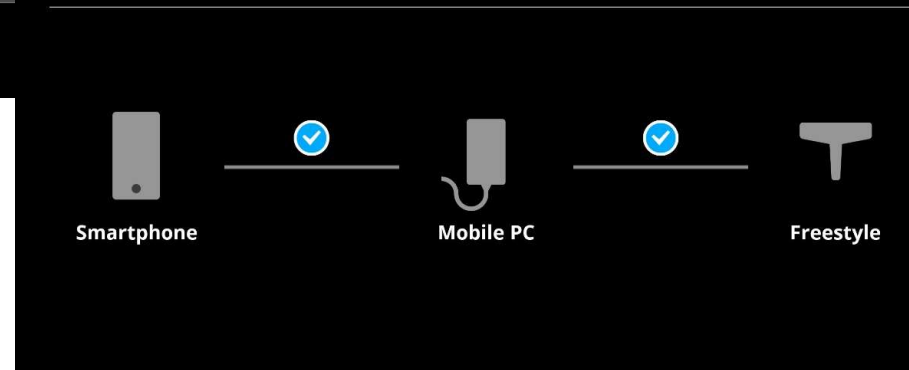
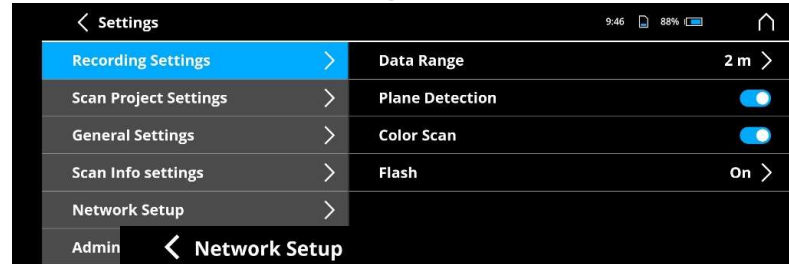
FARO Focus S150



FARO Freestyle II



FARO Freestyle II



FARO Focus Premium



FARO Sphere

FARO Sphere. Connect your work anytime, anywhere

With Sphere, users can:

- Close existing workflow gaps by enabling remote collaboration and project completion from anywhere in the world
- Eliminate additional site visits due to registration failure or incomplete scans
- Inform project stakeholders that a scan is complete and that modeling can begin, speeding job completion times yielding significant savings per project

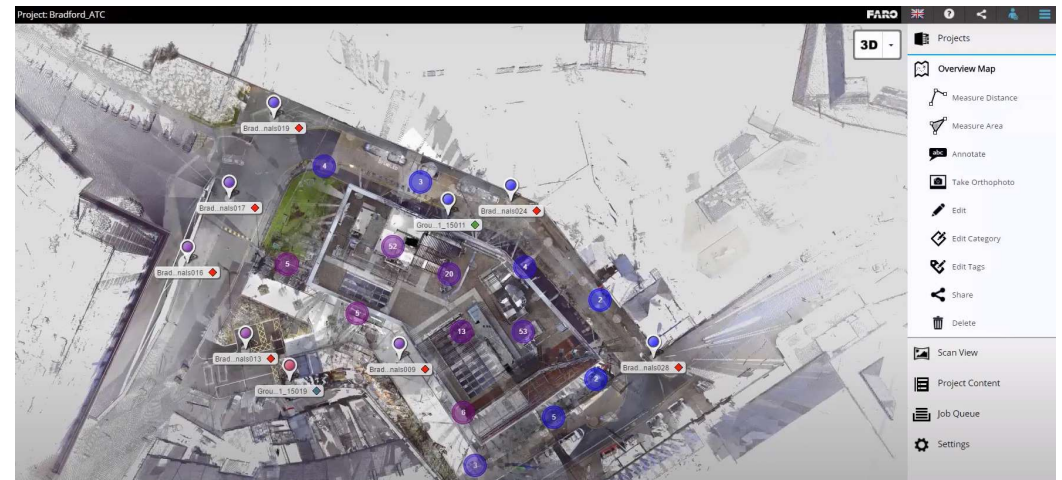
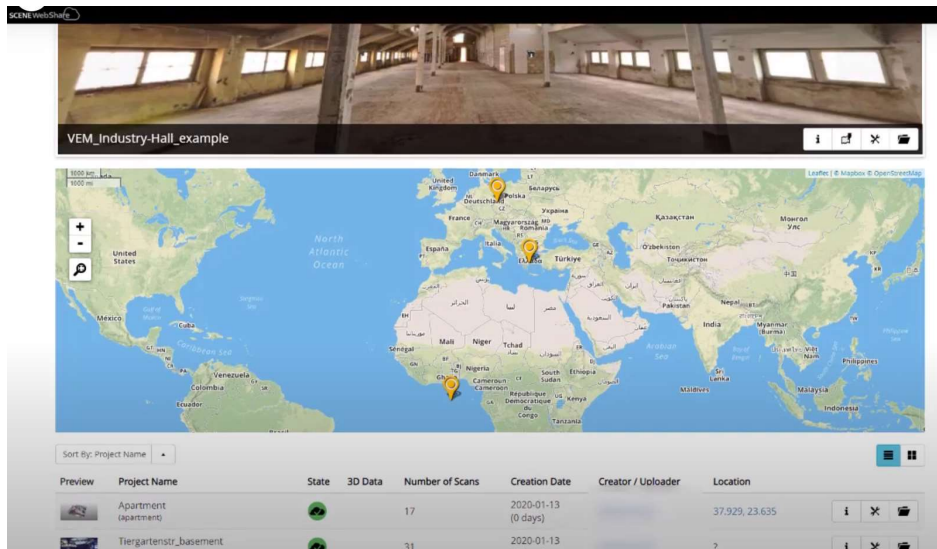
At its core, Sphere is a cloud-based data management hub. And with FARO WebShare serving as the web viewer, users can explore and share captured 3D data and compare that data with the design as a CAD or BIM output.



FARO Sphere is a cloud-based information platform that provides its users a centralized, collaborative experience across the company's reality capture applications and customer support tools through a secure, single point sign-on process that when paired with the Stream mobile app, enables faster 3D data capture, processing and project management anywhere in the world.

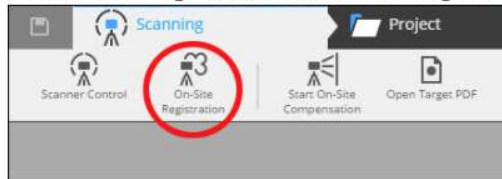
Sphere systematizes every activity while remaining intuitive to navigate, allowing users the ability to better organize their 3D scans and manage that data across diverse teams around the world. With FARO WebShare, an application within Sphere, users can view and explore project-based data with unmatched ease and efficiency.

FARO WebShare Cloud

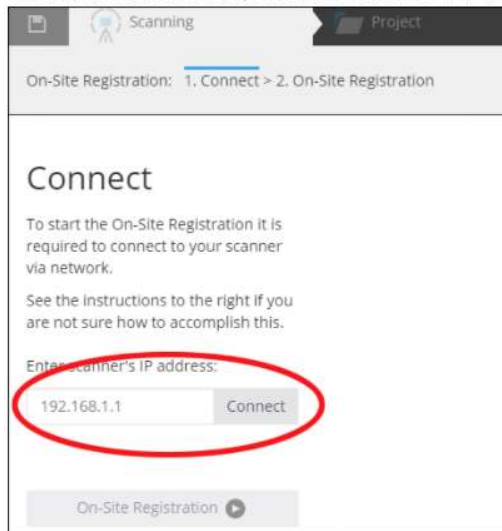


On-Site Registration

On the **Scanning** ribbon, click **On-Site Registration**.



On the connect screen, enter the scanner's IP address and click **Connect**.

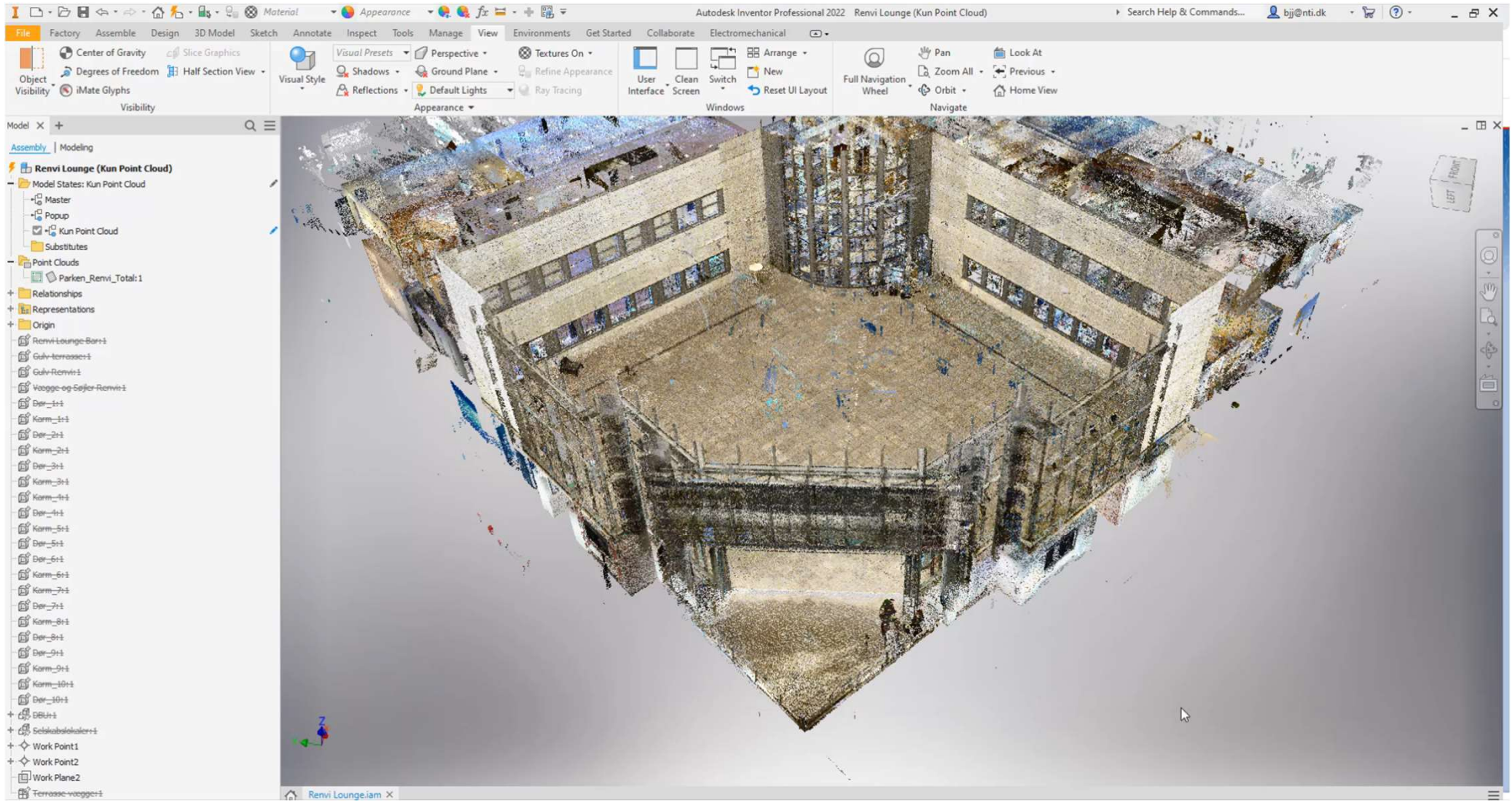


Scan Failed to Register

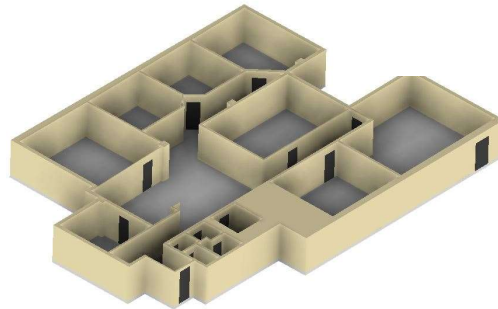
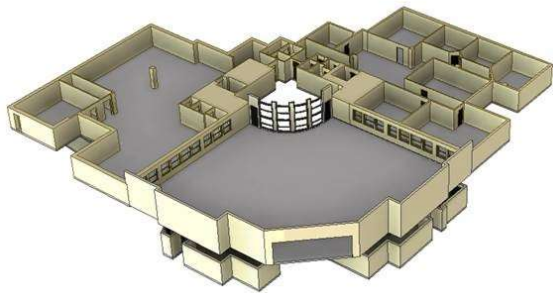
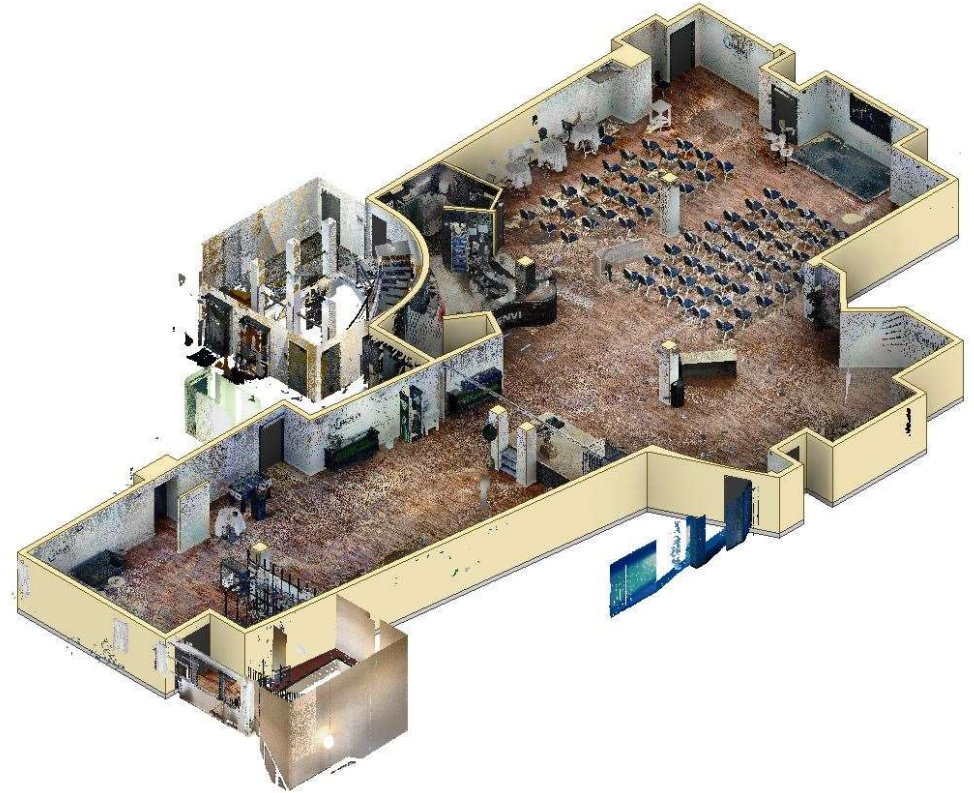
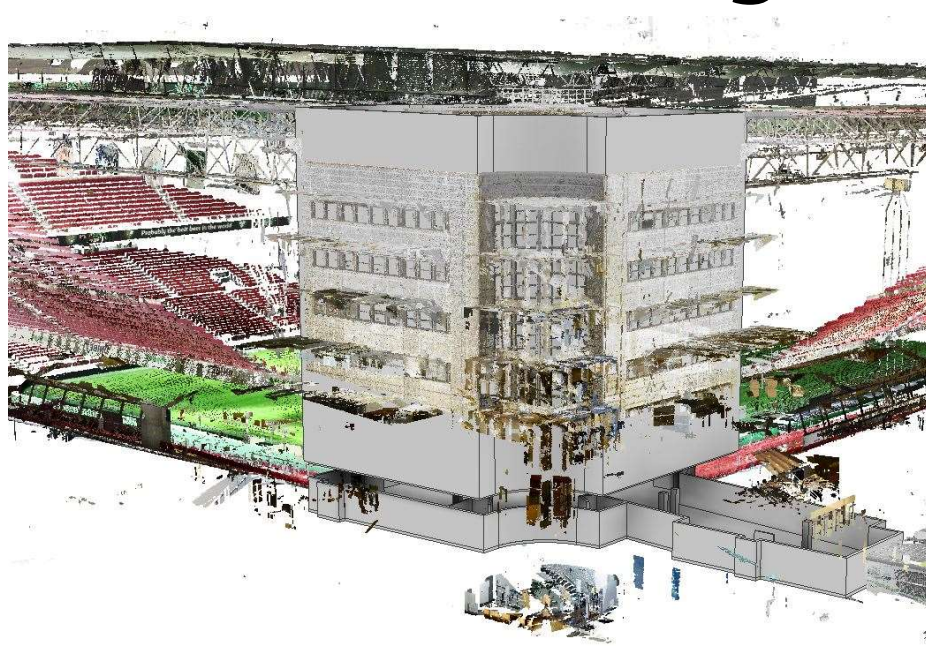
If a scan fails to register, you will see a warning icon, and the scan's status will be **Failed**.



Løsning - Inventor



Løsning –As-Built- Inventor



Løsning – Recap – As-Built – Inventor 'Factory - Navisworks

