

# Lancering Autodesk Inventor 2023

2022.1, 2022.2, 2022.3



V. Lasse Midtgaard & Razmik Jensen Arakelian

# Generel

- GPU Ray Tracing

- NVIDIA GPU

GeForce RTX series, such as the GeForce RTX 2060.

Quadro RTX series, such as the Quadro RTX 4000.

RTX A series, such as the RTX A2000.

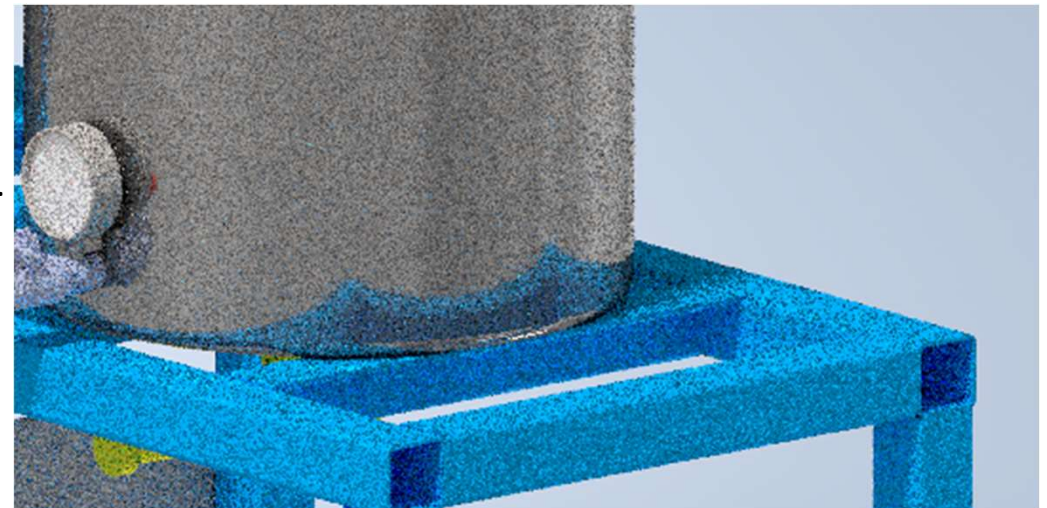
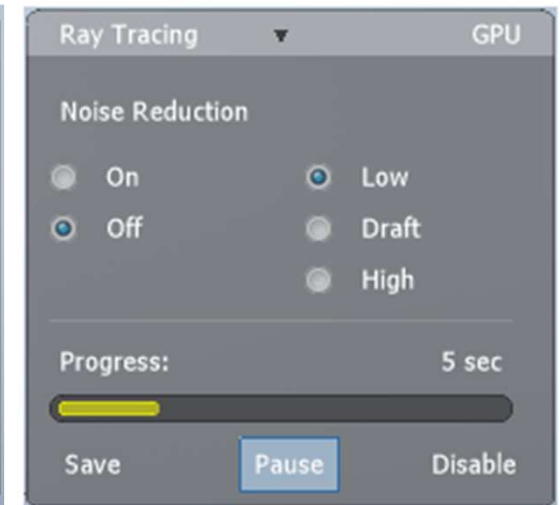
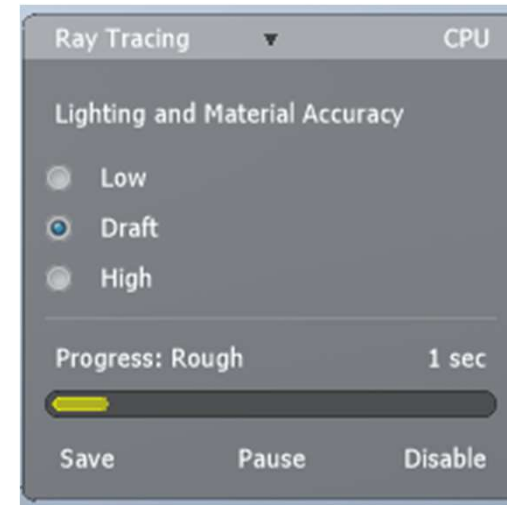
GeForce 10 series, such as the GeForce GTX 1080.

Quadro P series, such as the Quadro P4000.

RX 6000 series, including the mobile RX 6000M series.

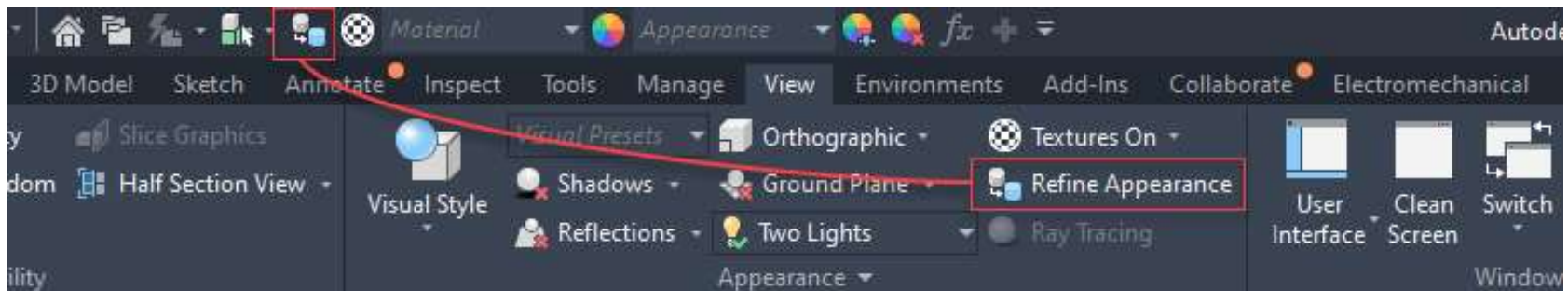
Radeon PRO W6000 series, such as the Radeon PRO W6800.

RTX: Ray Tracing Texel eXtreme



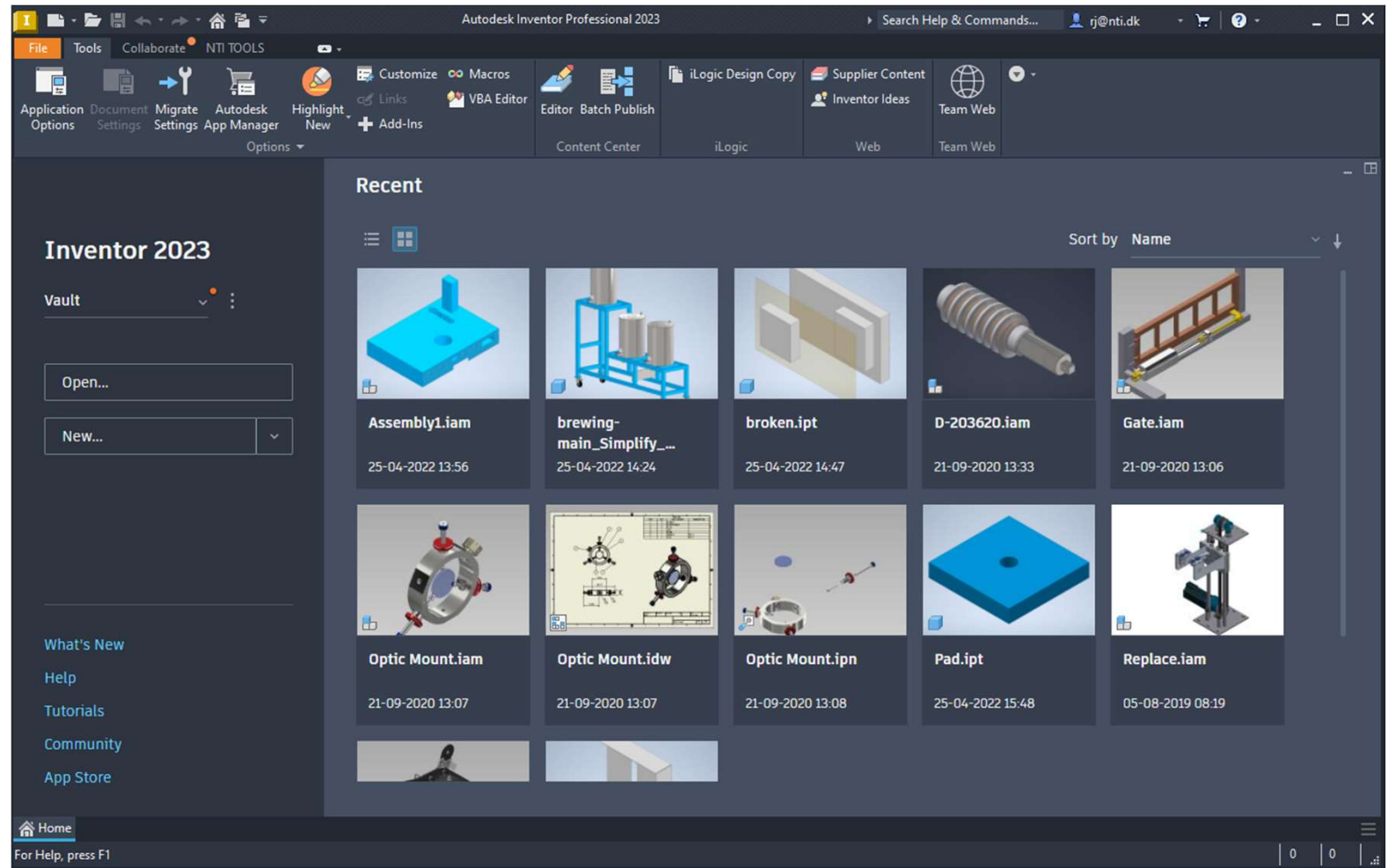
# Generel

- Automatic Display Refinement



# Generel

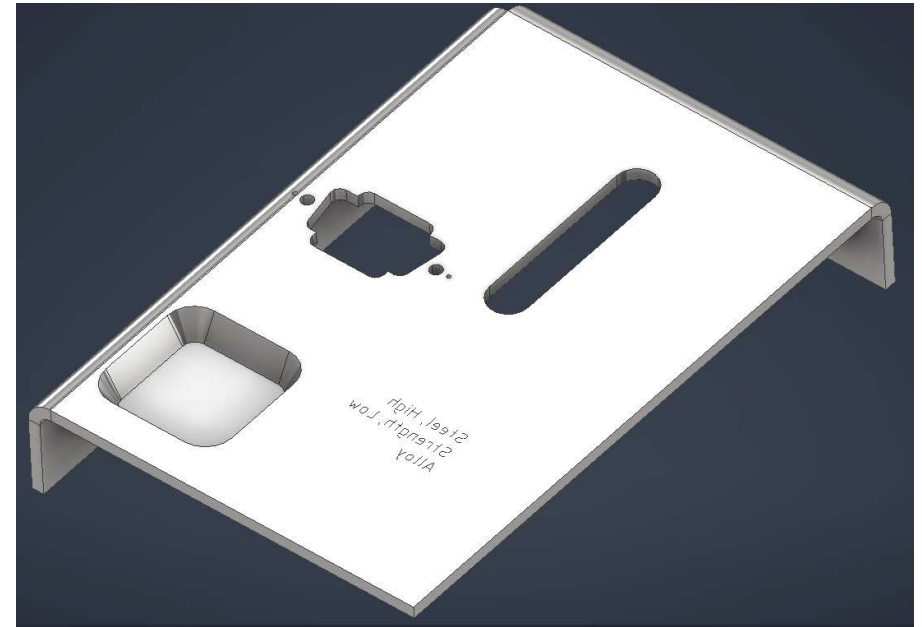
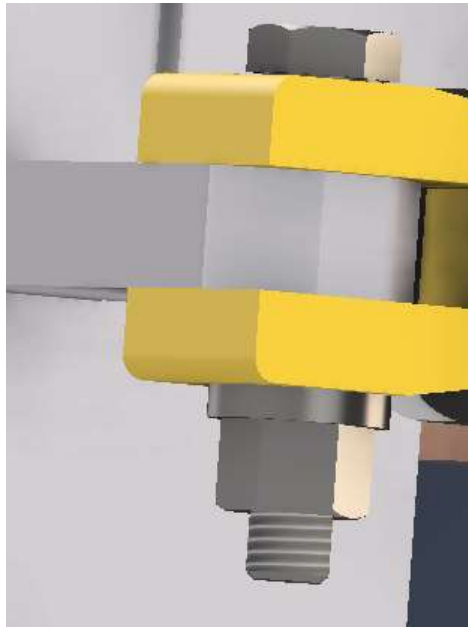
## ■ Home



# Generel

- Performance Improvements

- Threds
- iFeatures



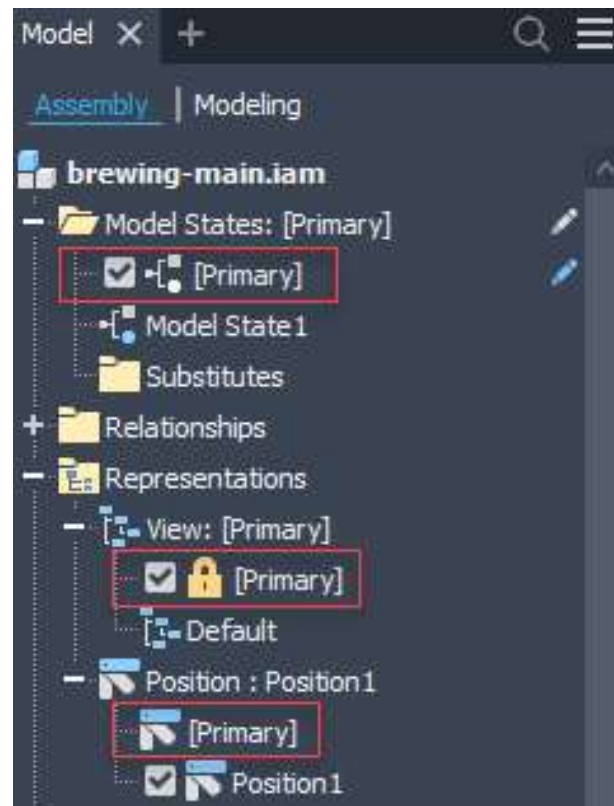
## Generel

- Free Orbit
  - Fuld model i visning
  - Model delvist set
  - Model uden for visningen



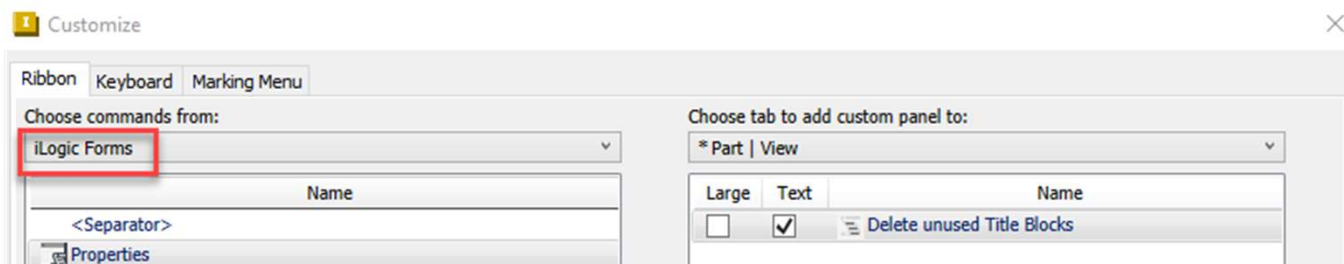
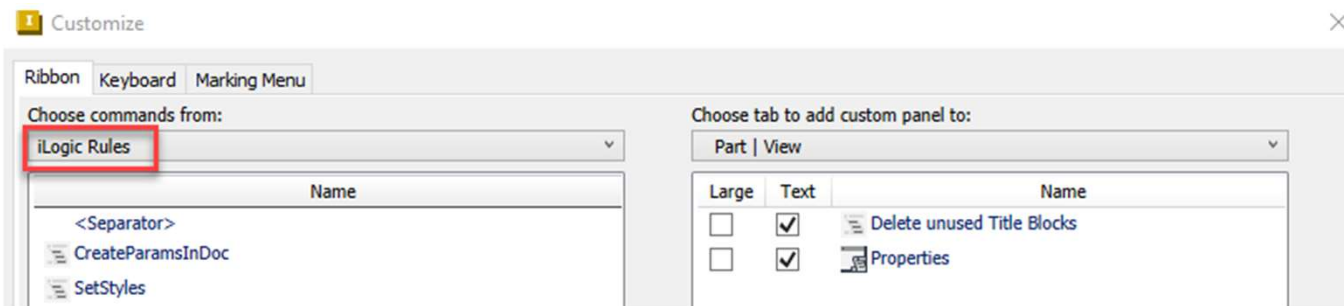
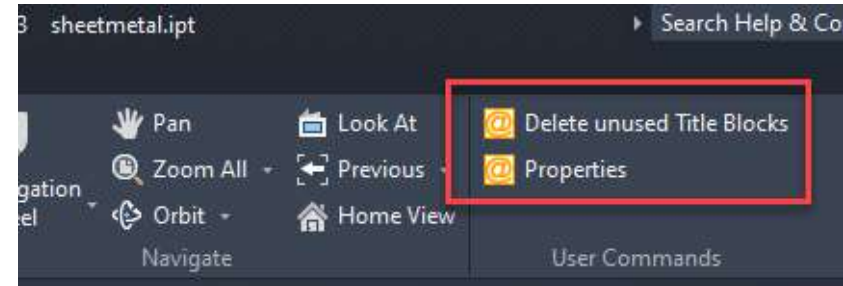
## Generel

- Master ændret til Primary



# General

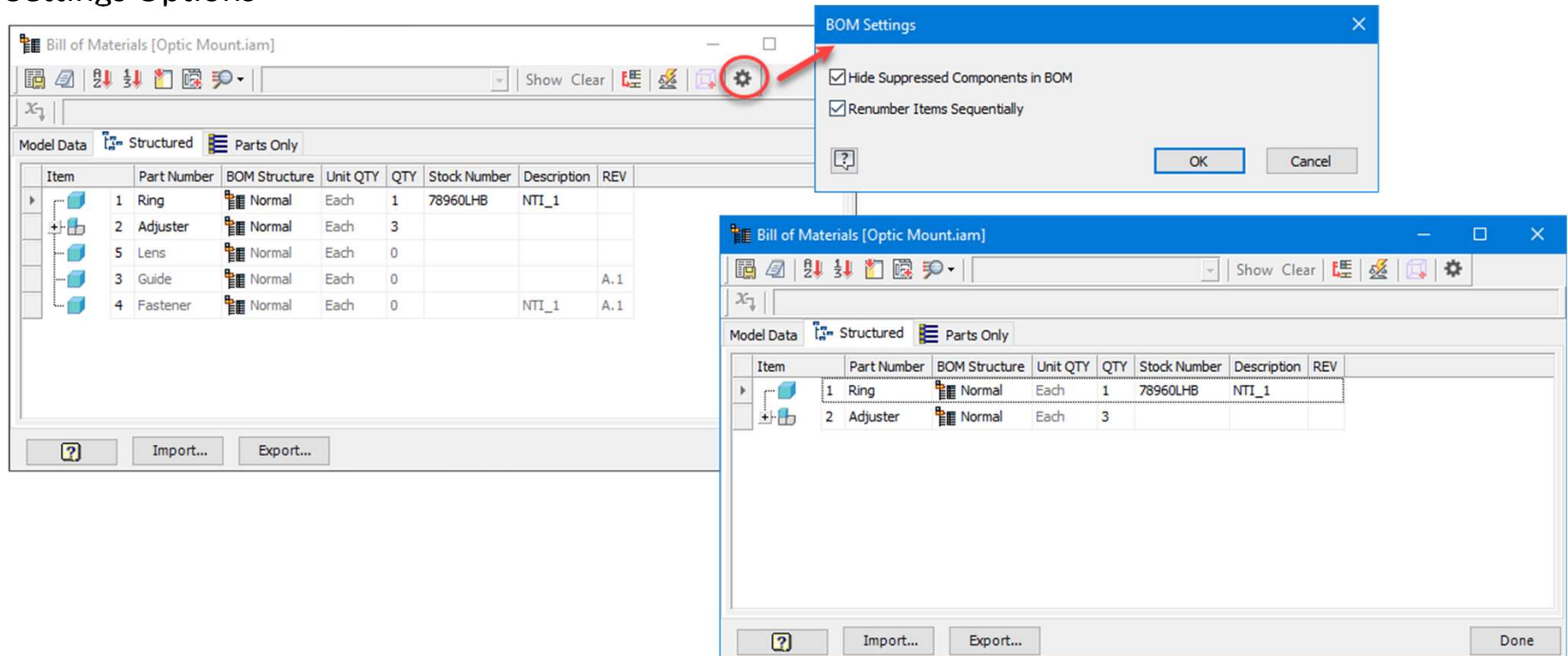
- Add external rules and global forms to the ribbon





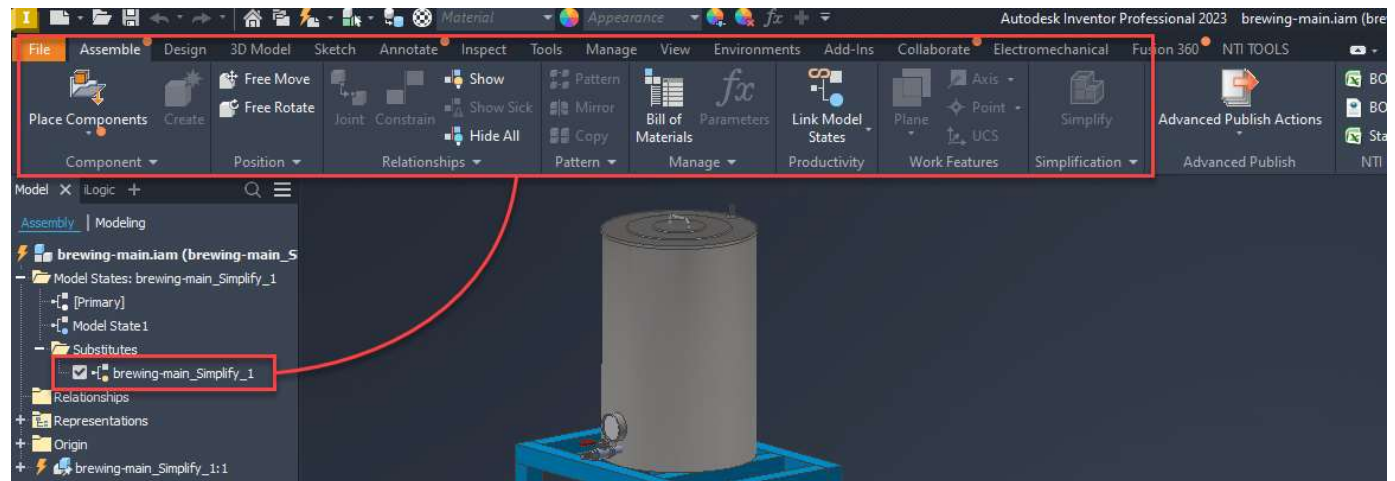
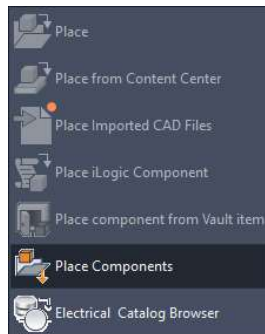
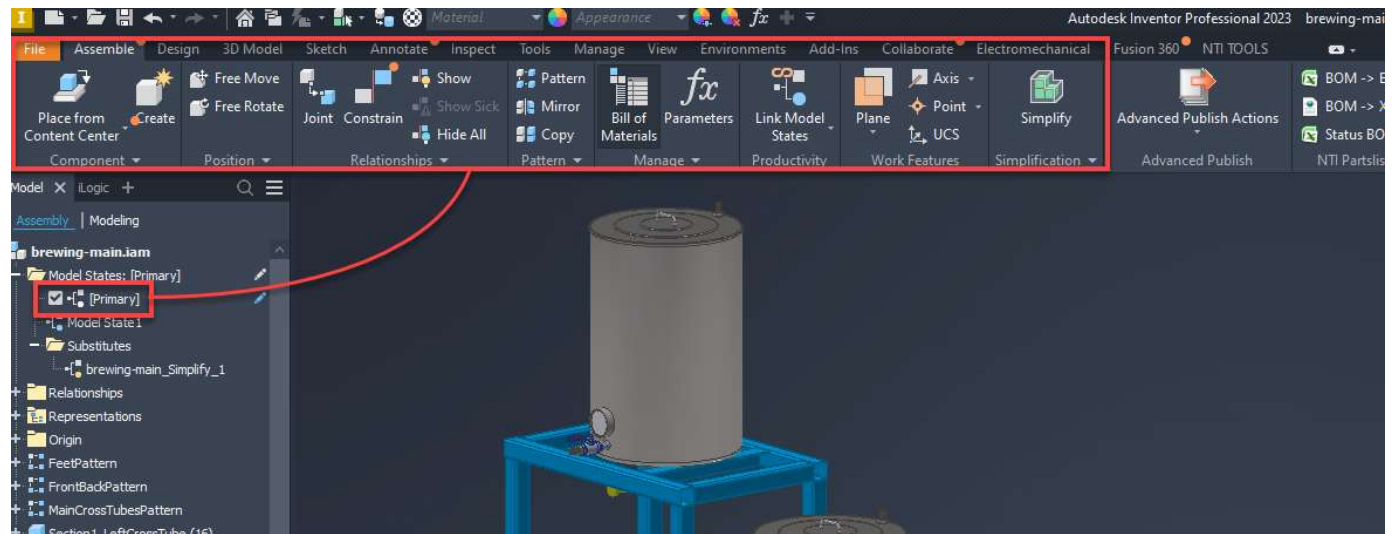
# Assemblies

## ■ BOM Settings Options



# Assemblies

- Sustain Model States

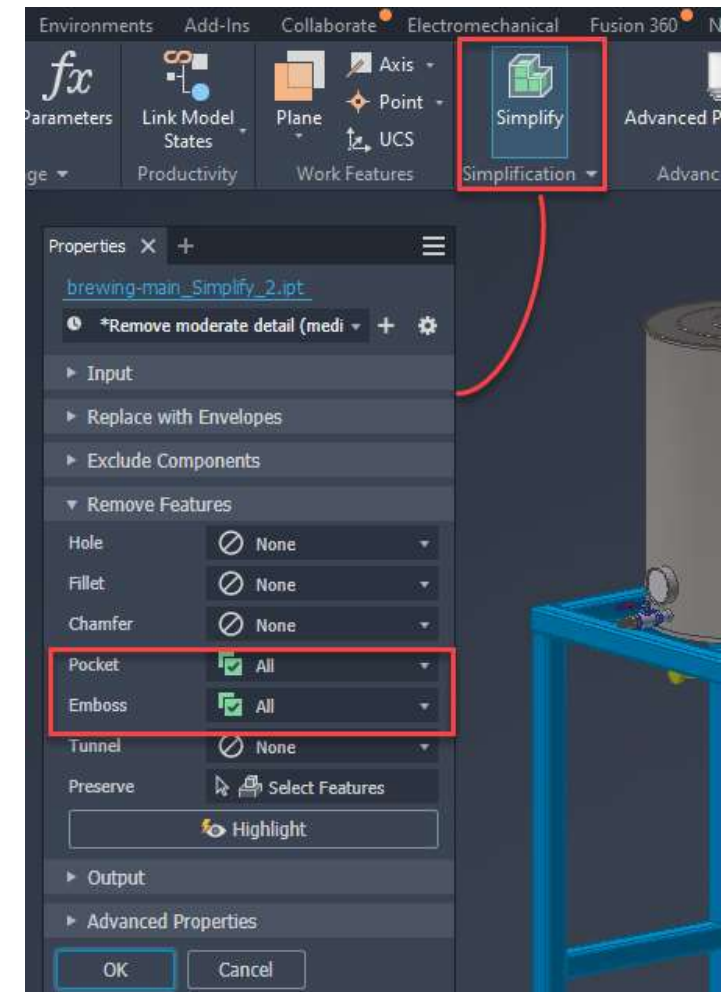


# Assemblies

- Simplify

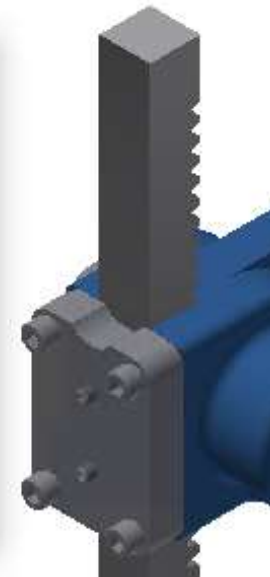
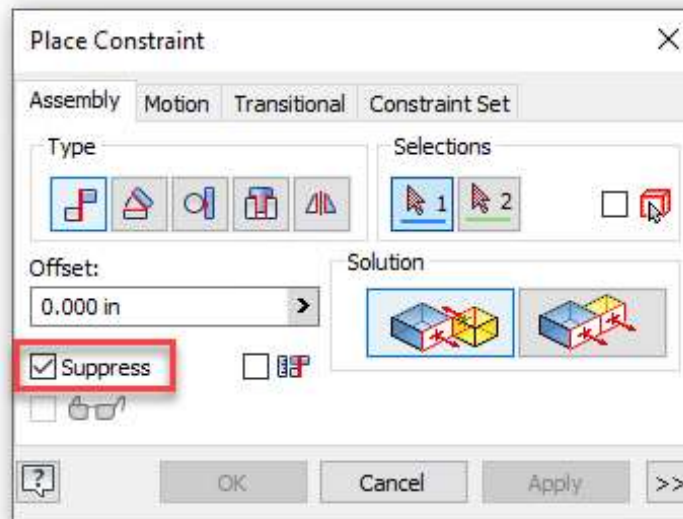
- Pocket: genkender subtractive
  - Extrud, Revolv, Sweep, m.m. (Cut)

- Emboss: genkender additive eller positive.
  - Emboss, Extrud, Revolv, Sweep, m.m (Join)



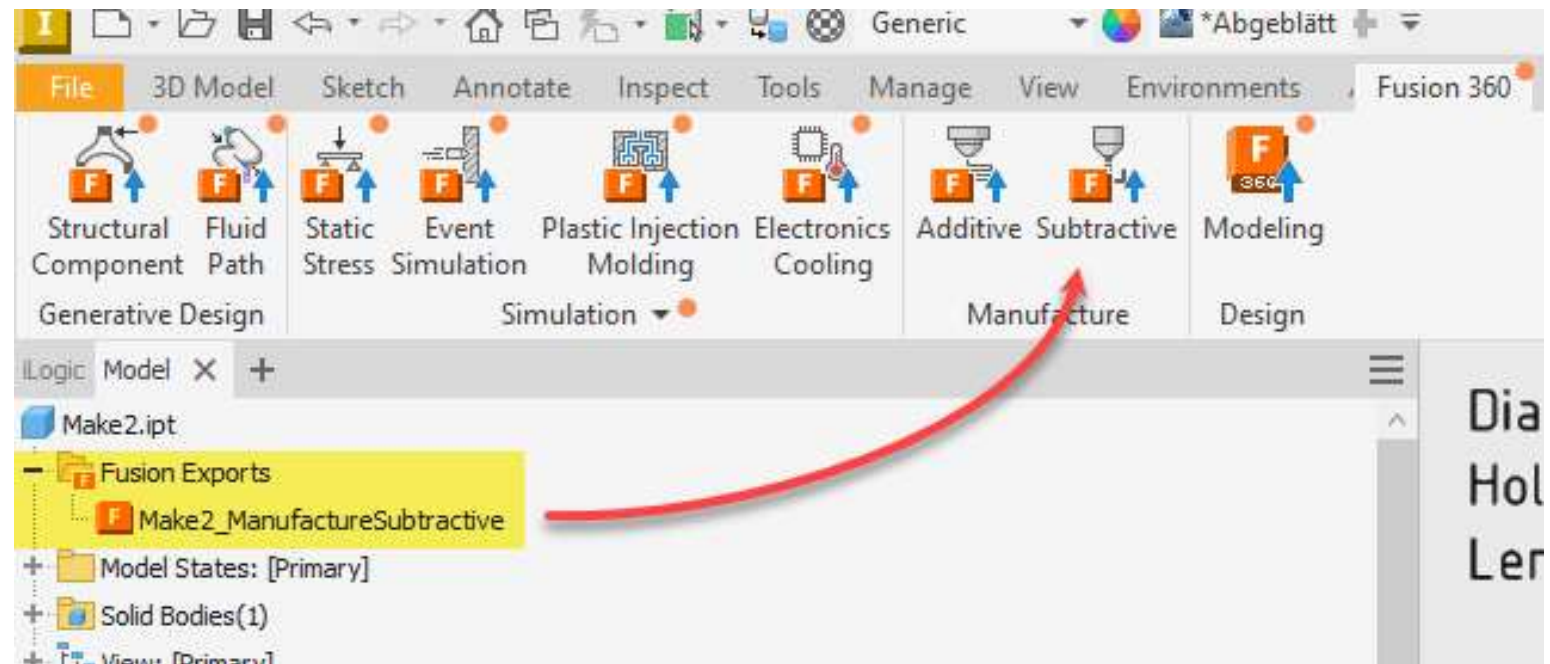
# Assemblies

- Constraint



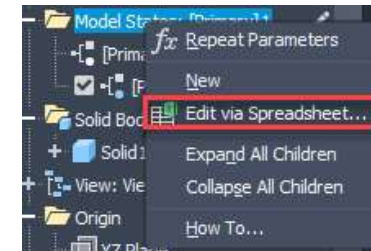
# Parts

- Fusion 360 / Inventor

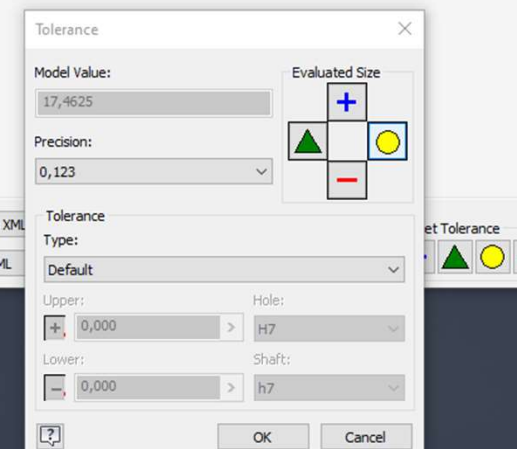
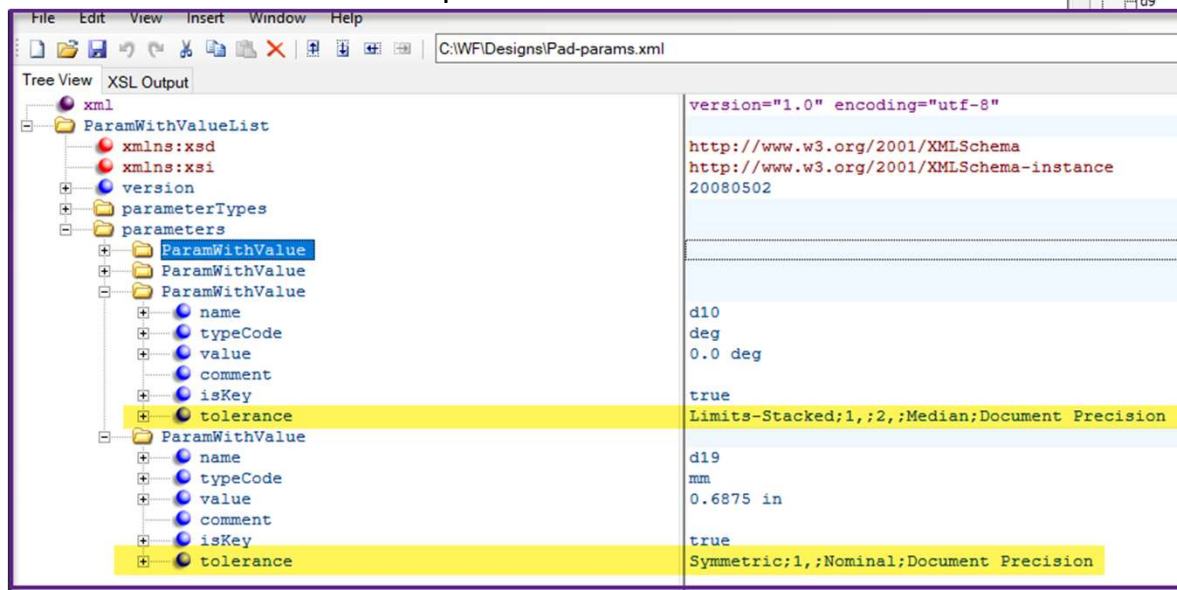


# Parts

- Tolerance og parameter
  - Toleranceindstillinger gælder for hver Model State
  - Tabellen kan editeres via Excel
  - Tabellen kan eksporteres til XML



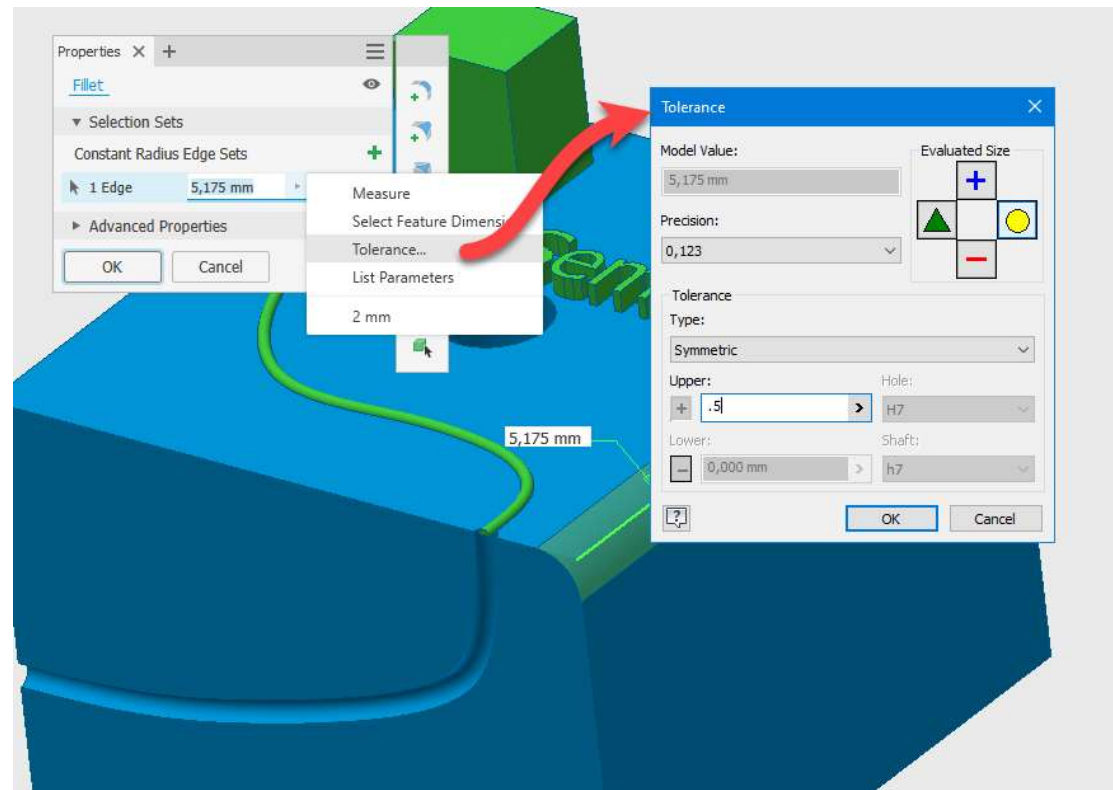
Parameter Name	Consumed by	Unit/Type	Equation	Nominal Value	Tolerance	Model Value	Key
Model Parameters							
d0	Sketch1	mm	3 in	76,200000	<Default>	76,200000	
d1	Sketch1	mm	3 in	76,200000	<Default>	76,200000	
d2	Extrusion1	mm	2 in	50,800000	<Default>	50,800000	
d3	Extrusion1	deg	0,0 deg	0,000000	<Default>	0,000000	
d4	Sketch2	mm	0,5 in	12,700000	<Default>	12,700000	
d6	Extrusion2	deg	0,0 deg	0,000000	<Default>	0,000000	
d9	Extrusion4	mm	0,125 in	3,175000	<Default>	3,175000	
	Extrusion4	deg	0,0 deg	0,000000	<Default>	0,000000	
	werwerwer	mm	0,6875 in	17,462500	<Default>	17,462500	
	werwerwer	deg	0,00 deg	0,000000	<Default>	0,000000	
		in	1,0 in	1,000000	<Default>	1,000000	





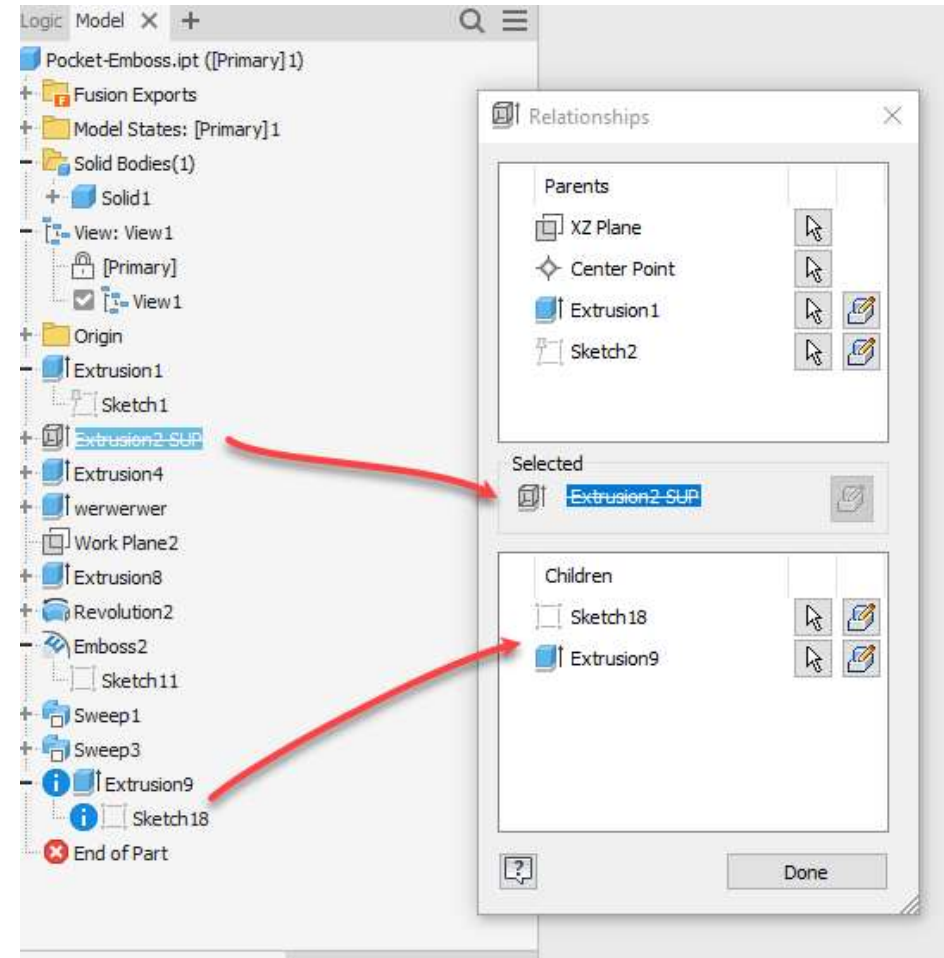
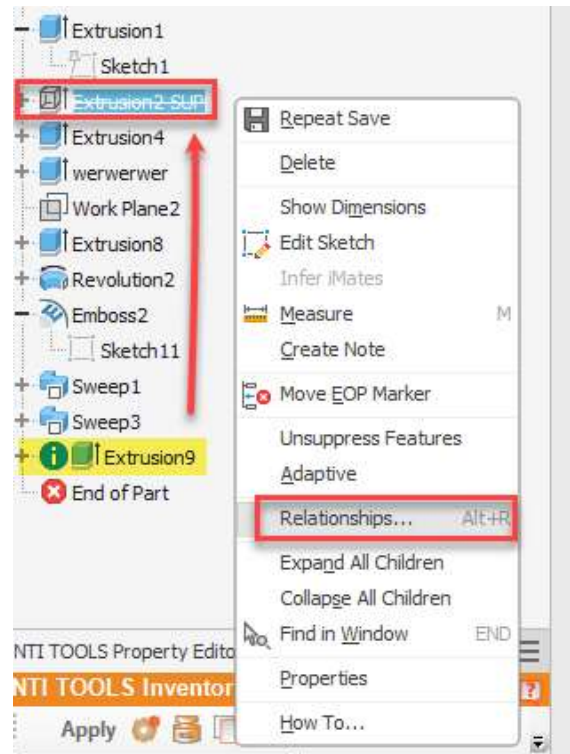
# Parts

## ■ Fillet Tolerance



# Parts

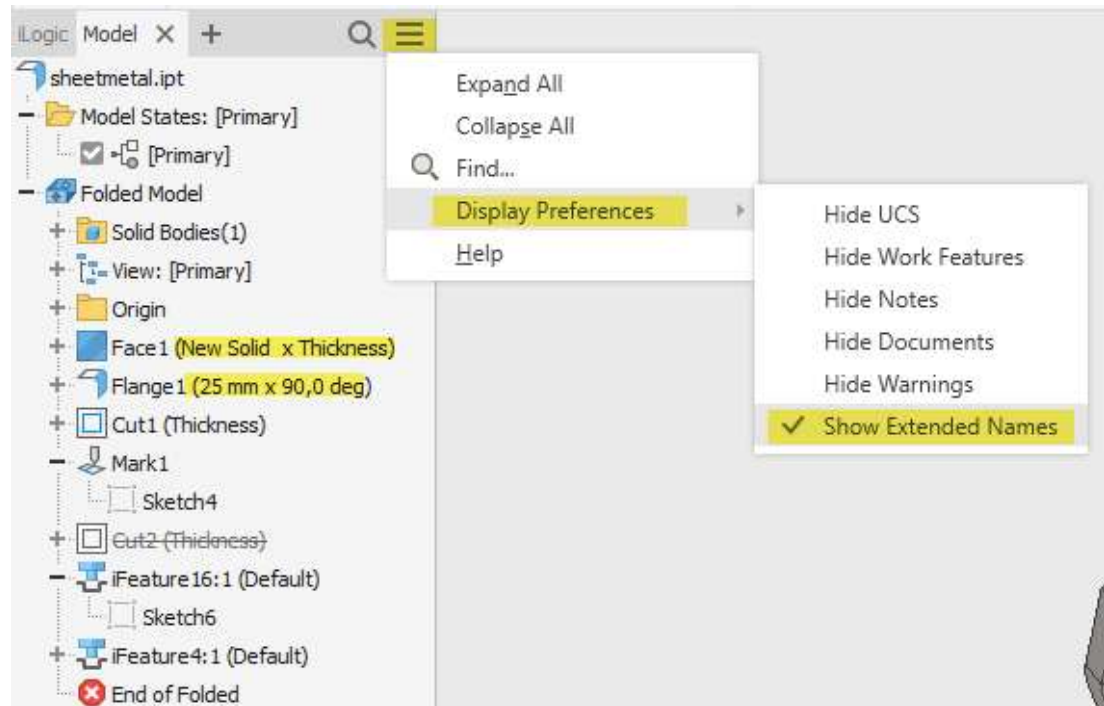
## ■ Feature Relationships





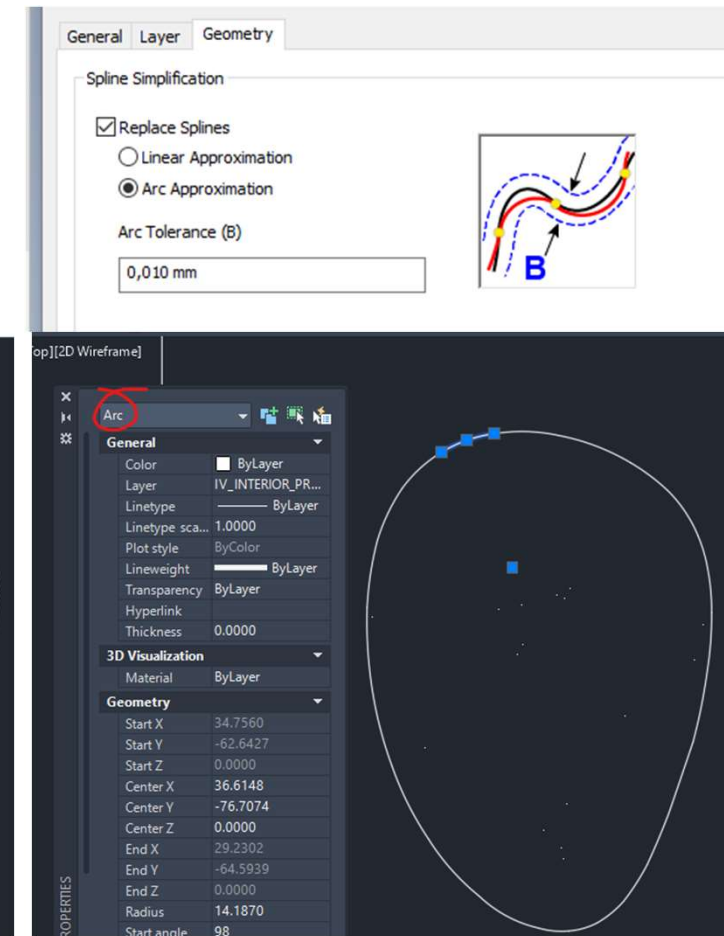
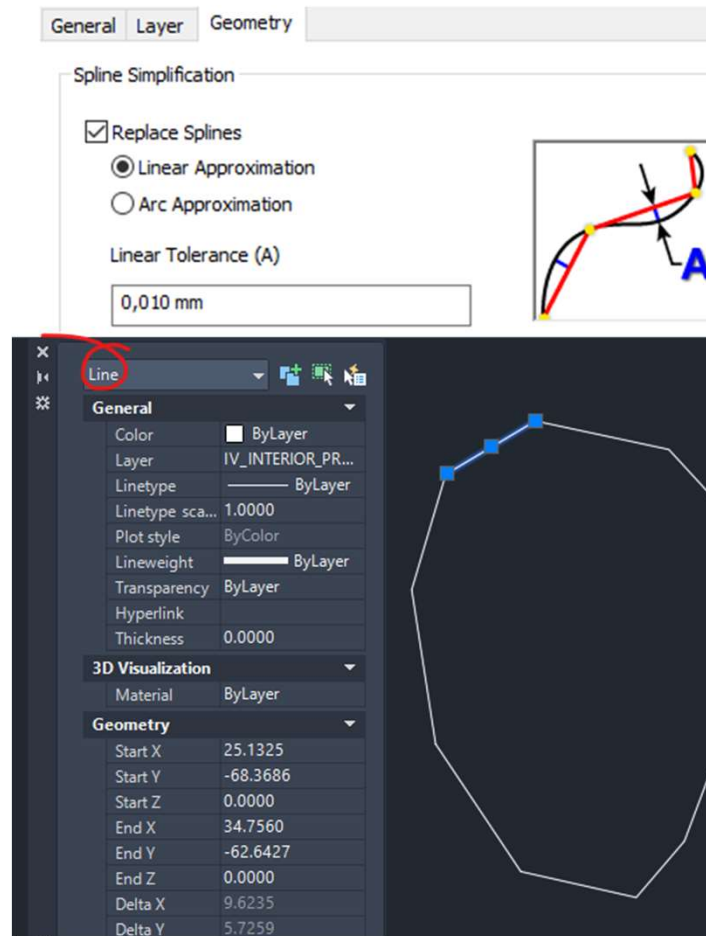
# Sheet Metal Parts

- Display Extended Names



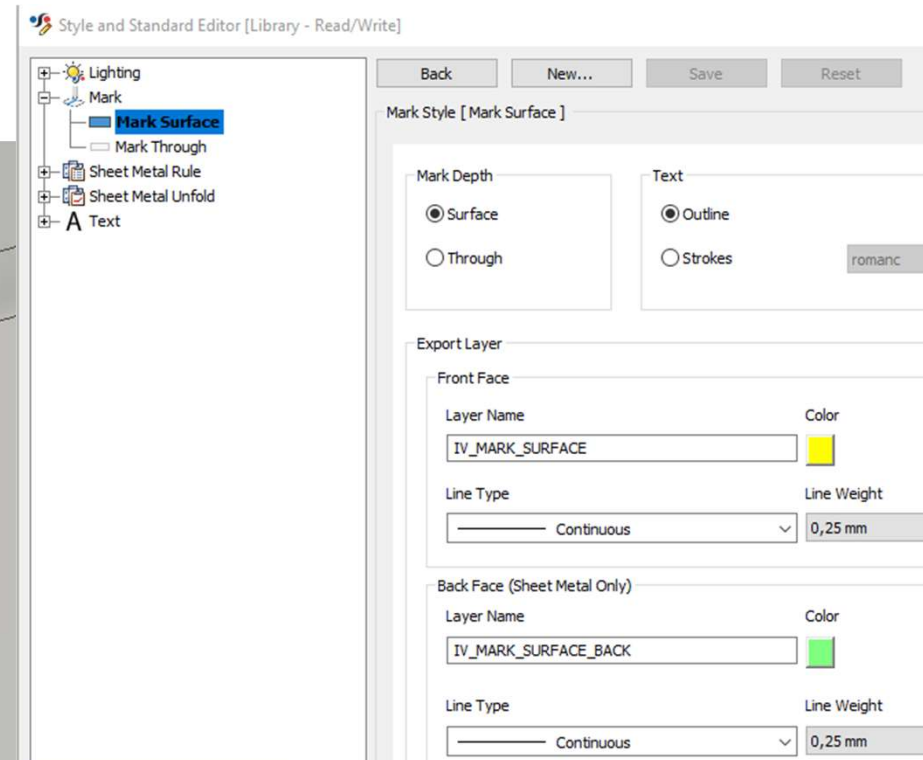
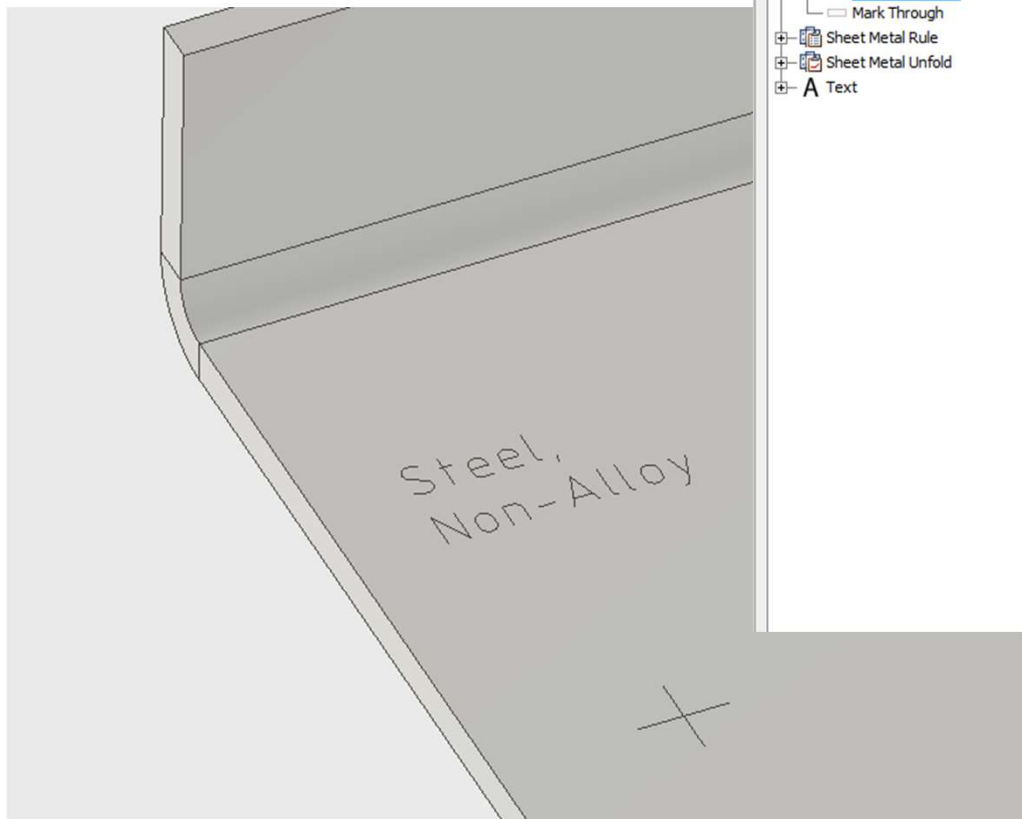
# Sheet Metal Parts

## ■ Arc Approximation



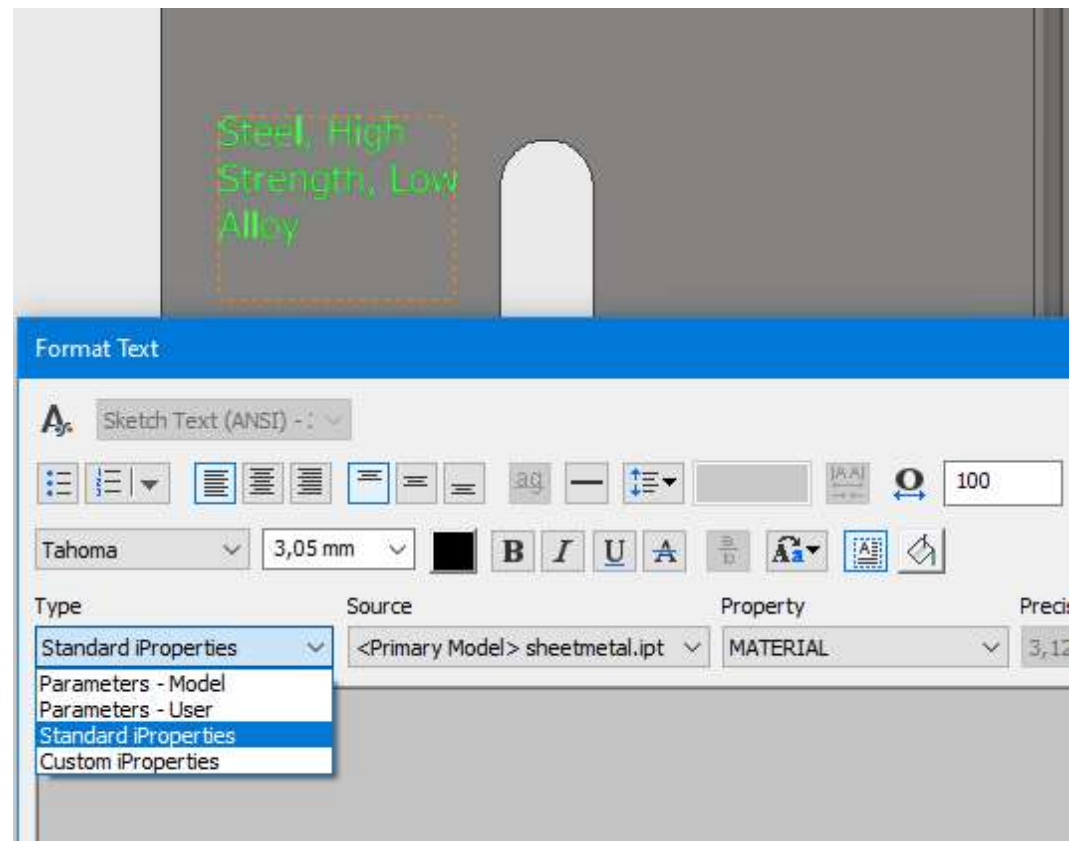
# Sheet Metal Parts and Parts

## ■ Mark



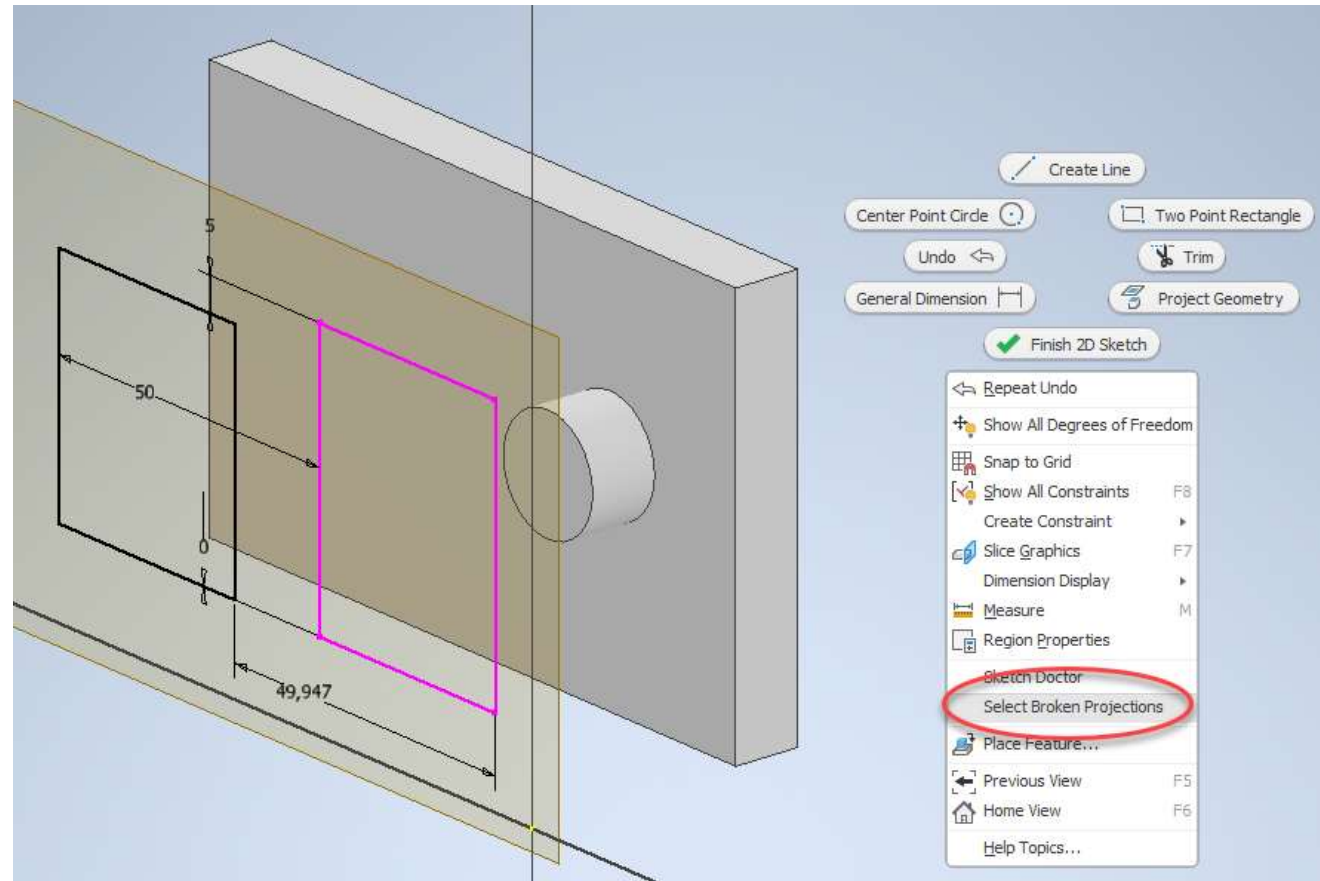
# Sketch

- Standard og Custom iProperties som tekst



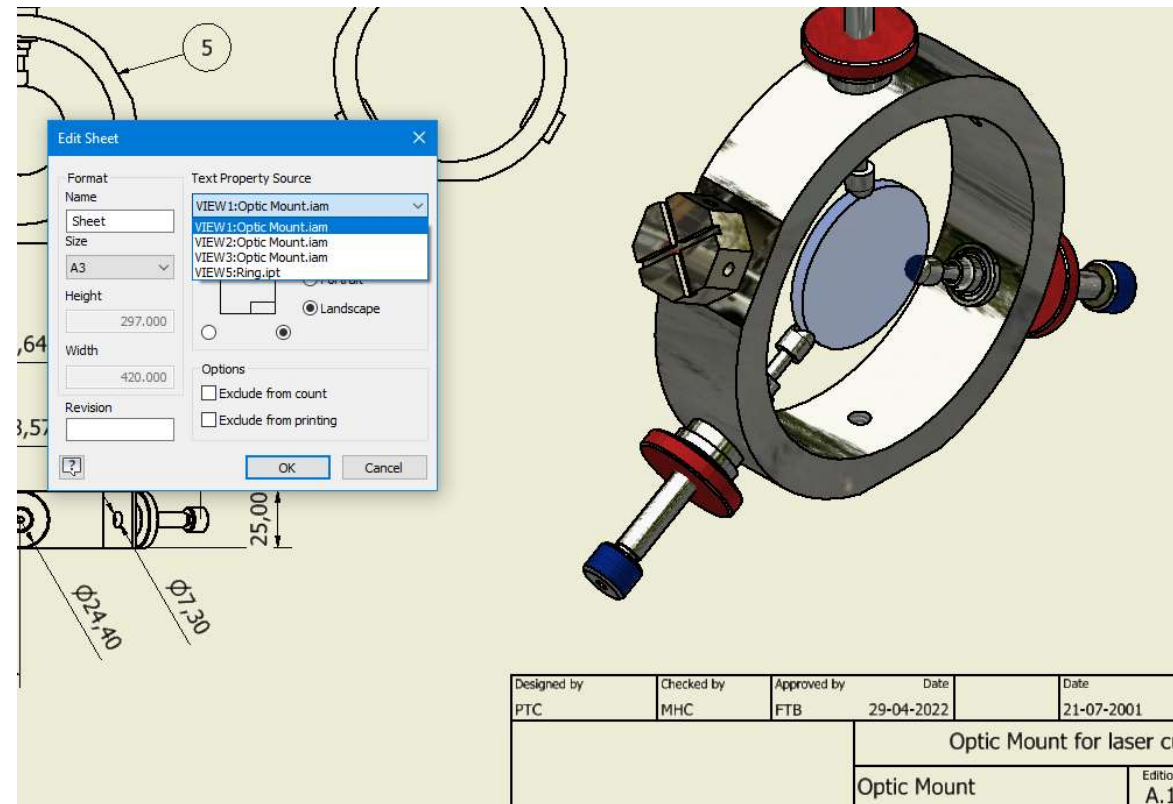
# Sketch

## ■ Broken Projections



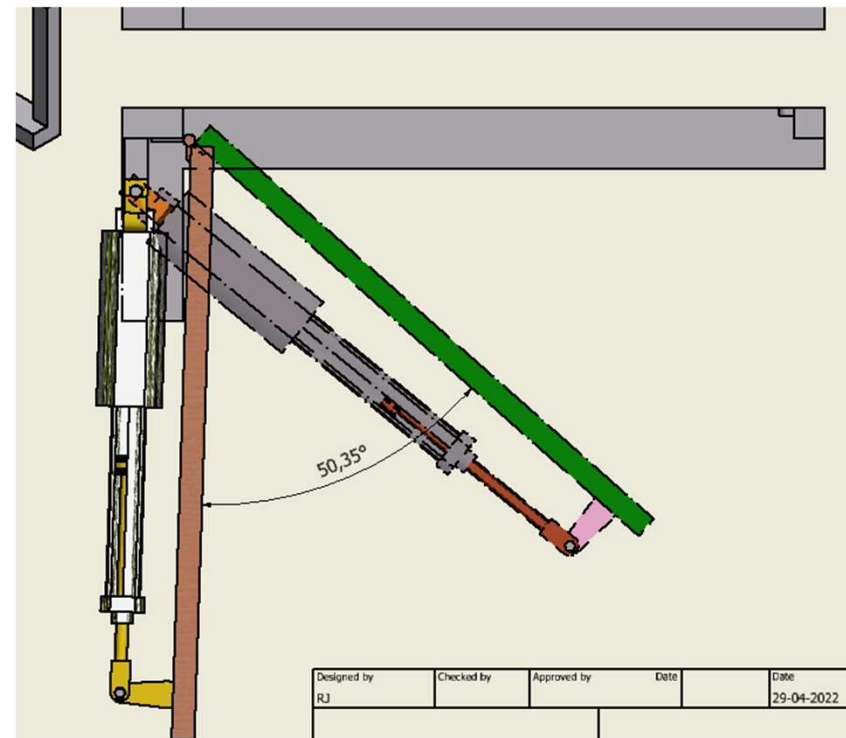
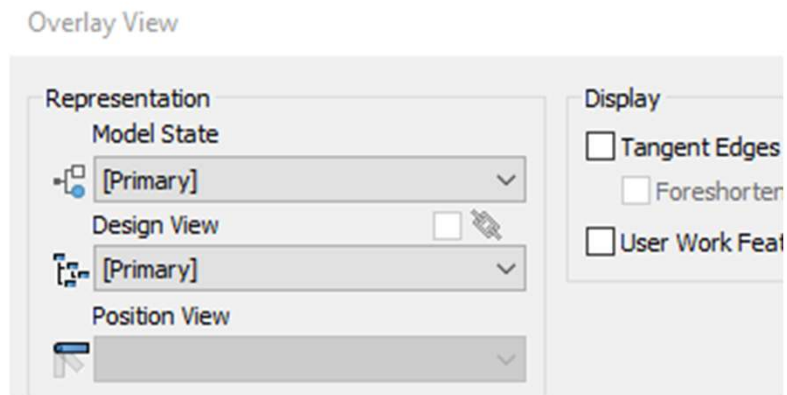
# Drawings

- Text Property Source for Sheets



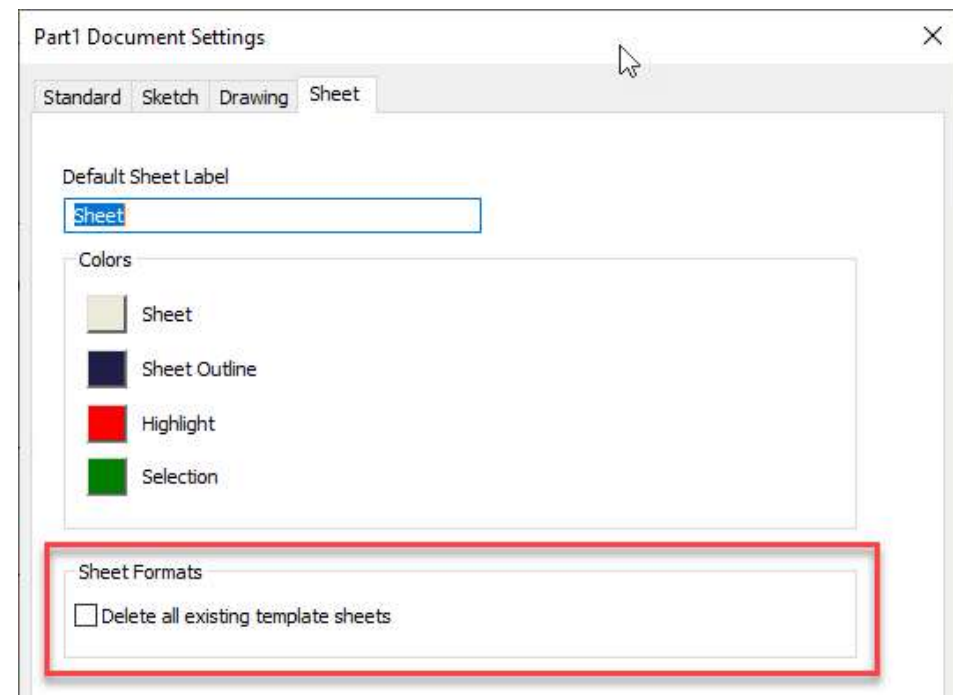
# Drawings

- Overlay View og Model State



# Drawings

- Delete all existing template sheets





# Drawings

- Properties for text input | drawing Dimension

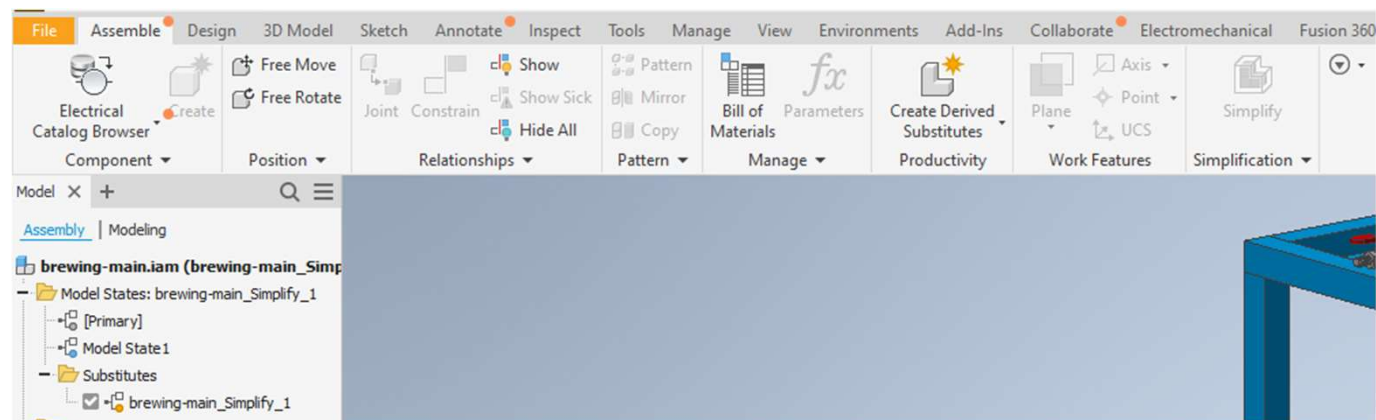
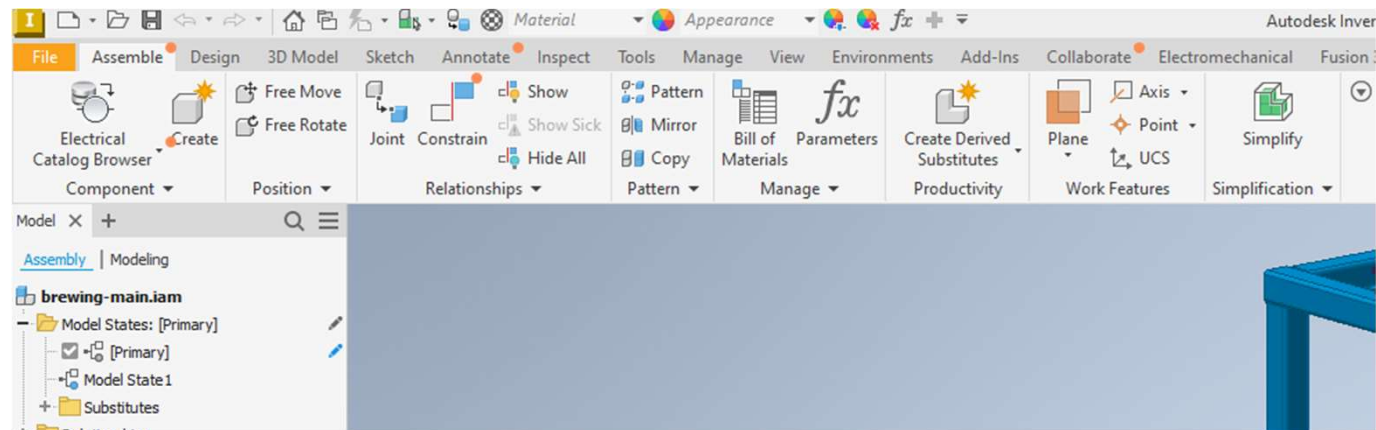
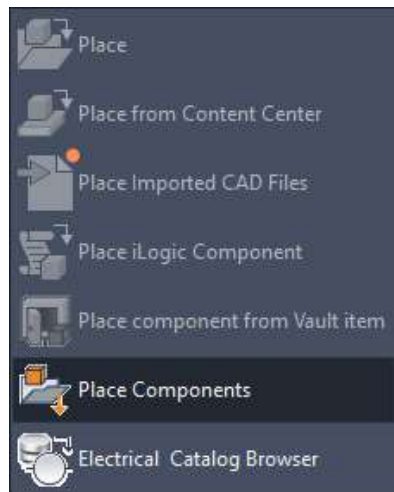
2022

Parameters - Model
Parameters - User

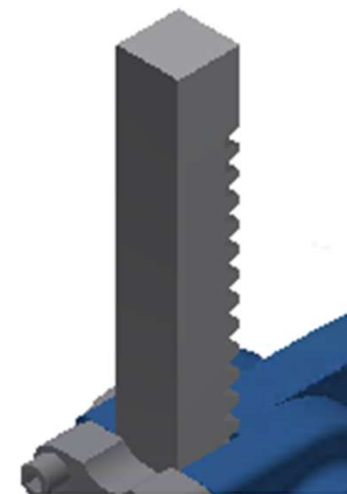
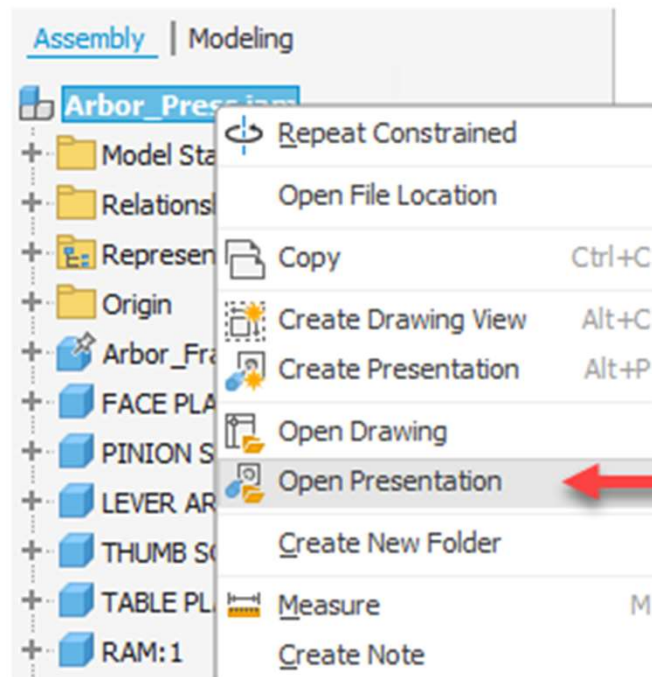
2023

Parameters - Model
Parameters - User
Standard iProperties
Drawing Properties
Sheet Properties
Physical Properties - Model

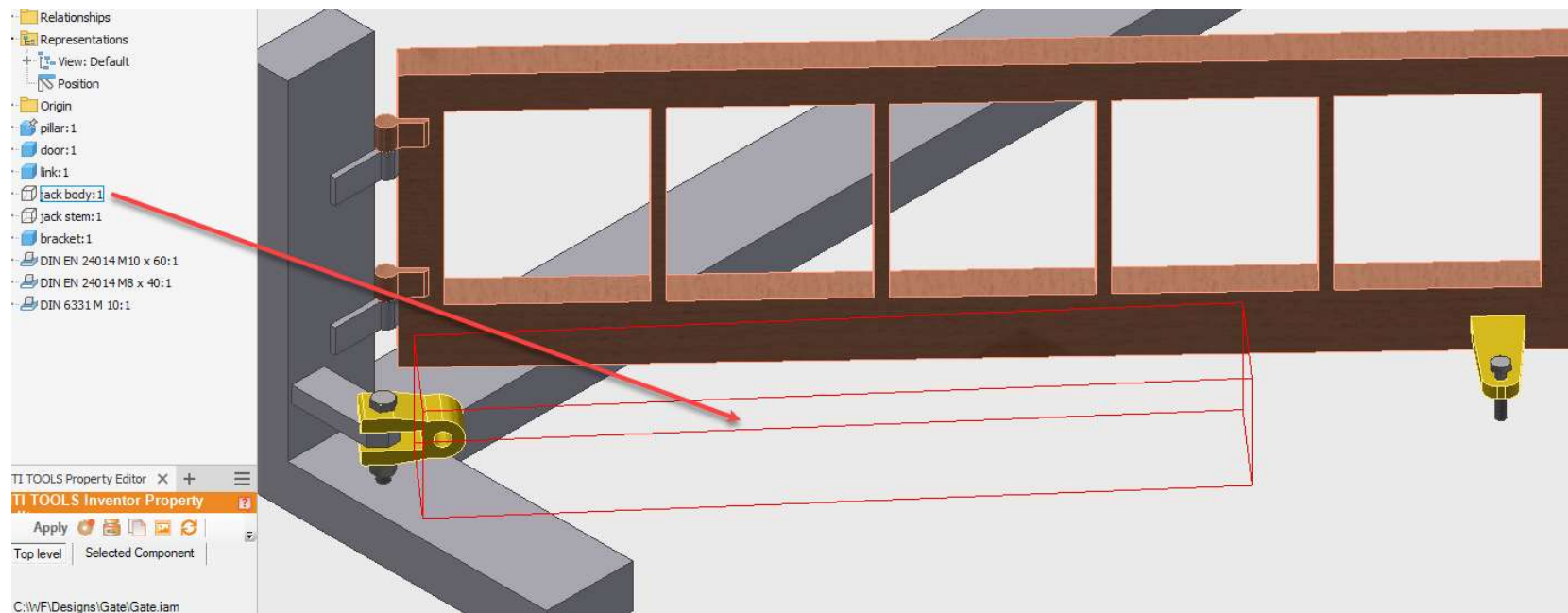
2022.1



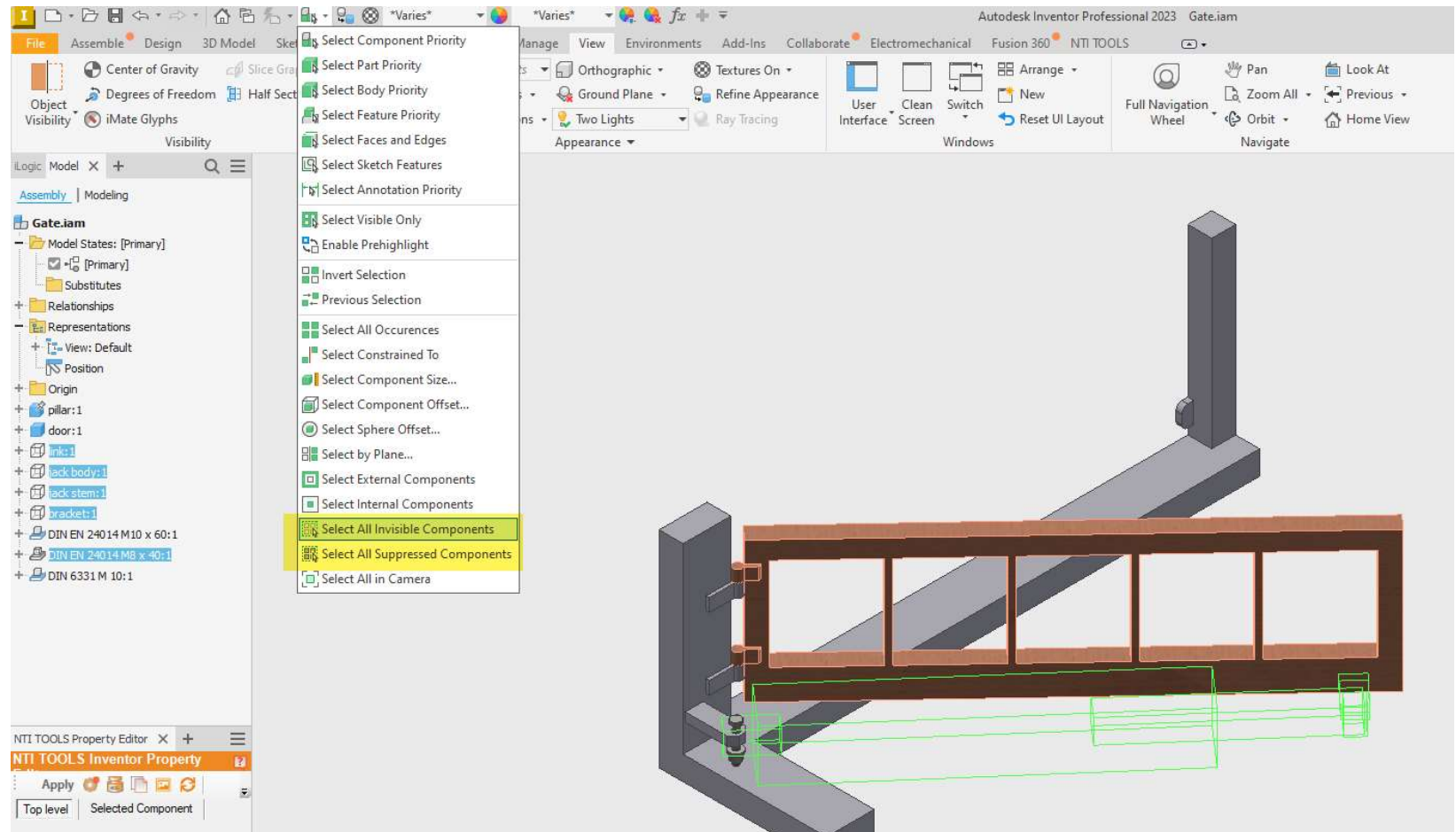
2022.1



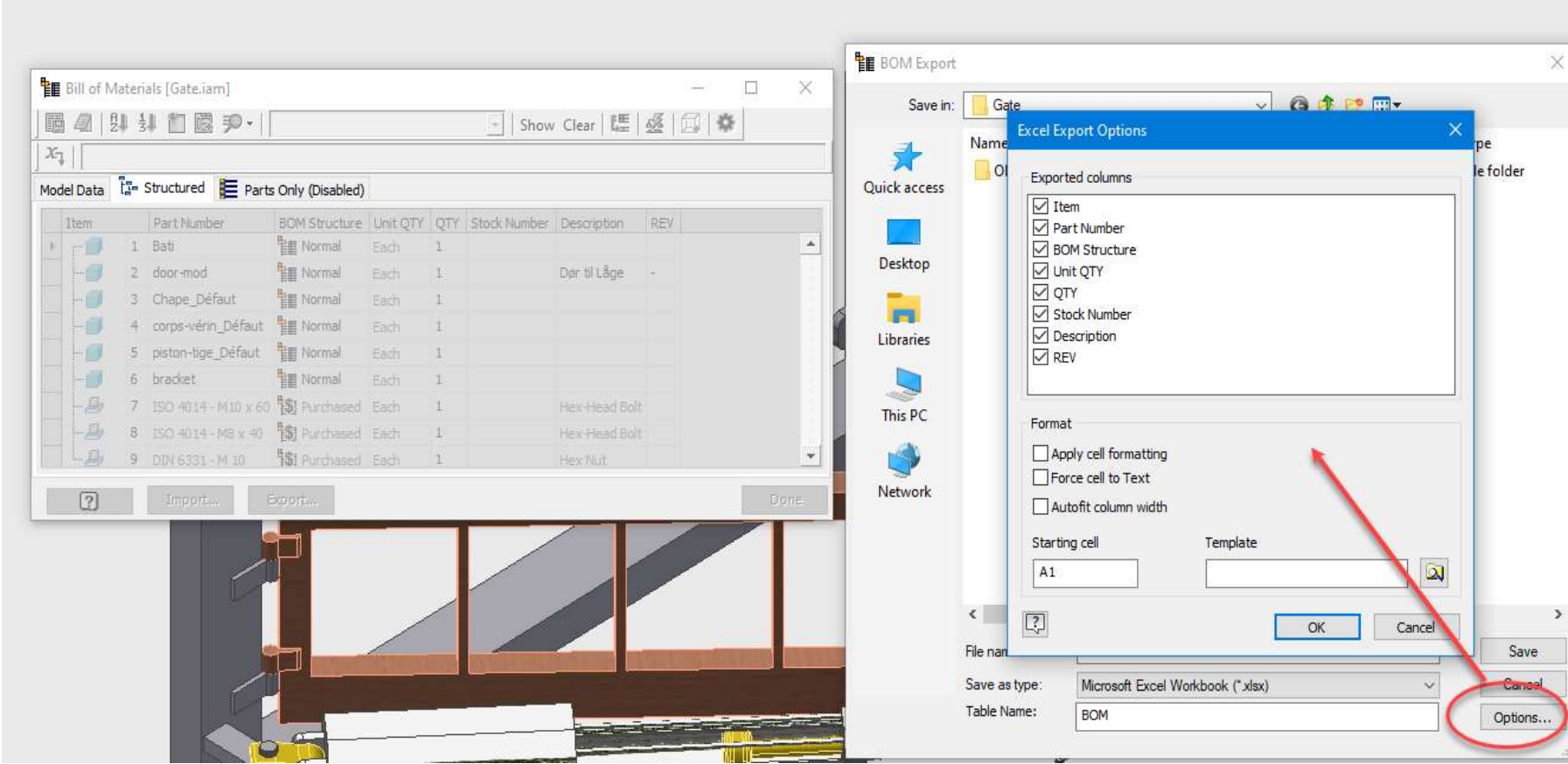
2022.1



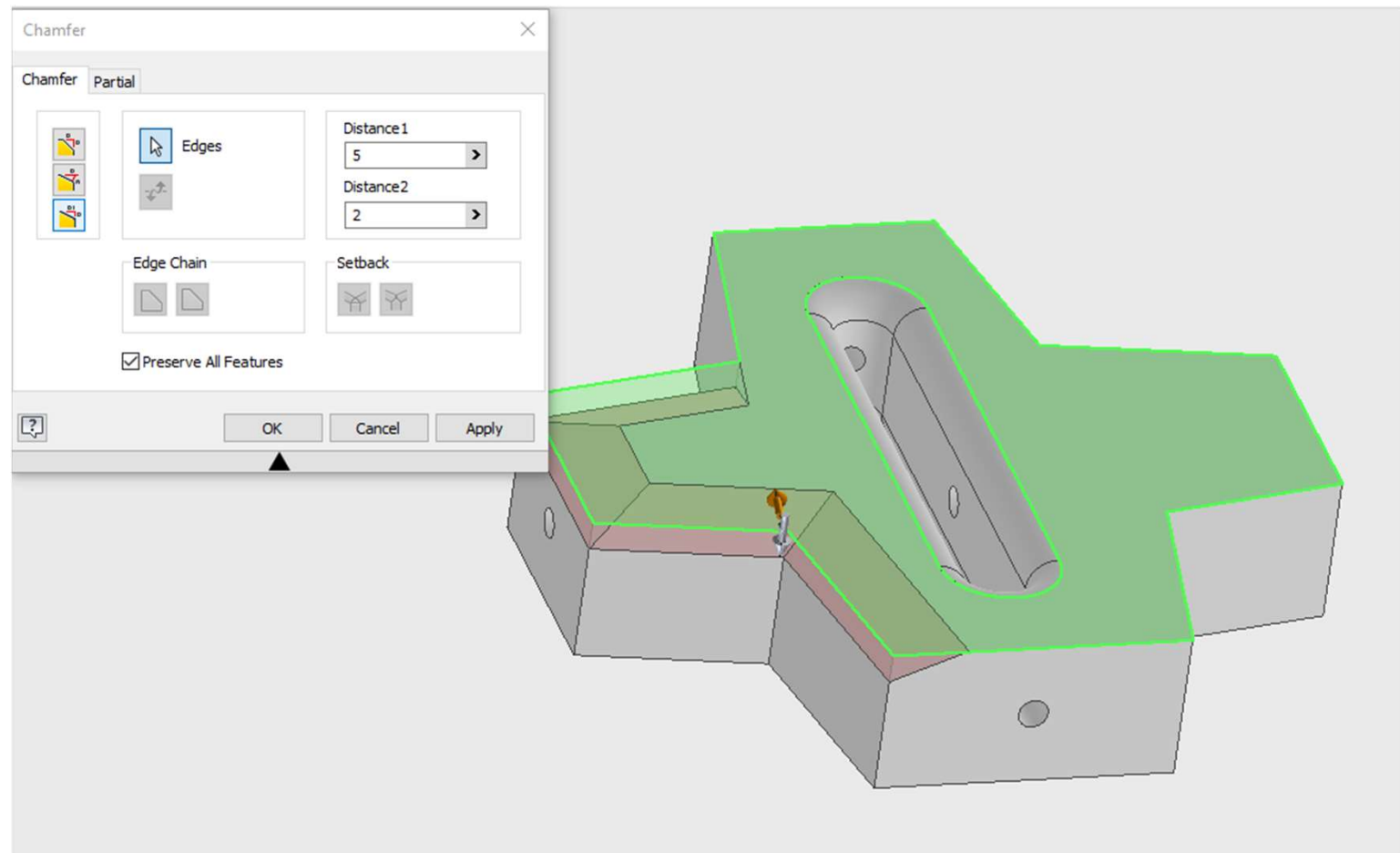
2022.1



2022.1

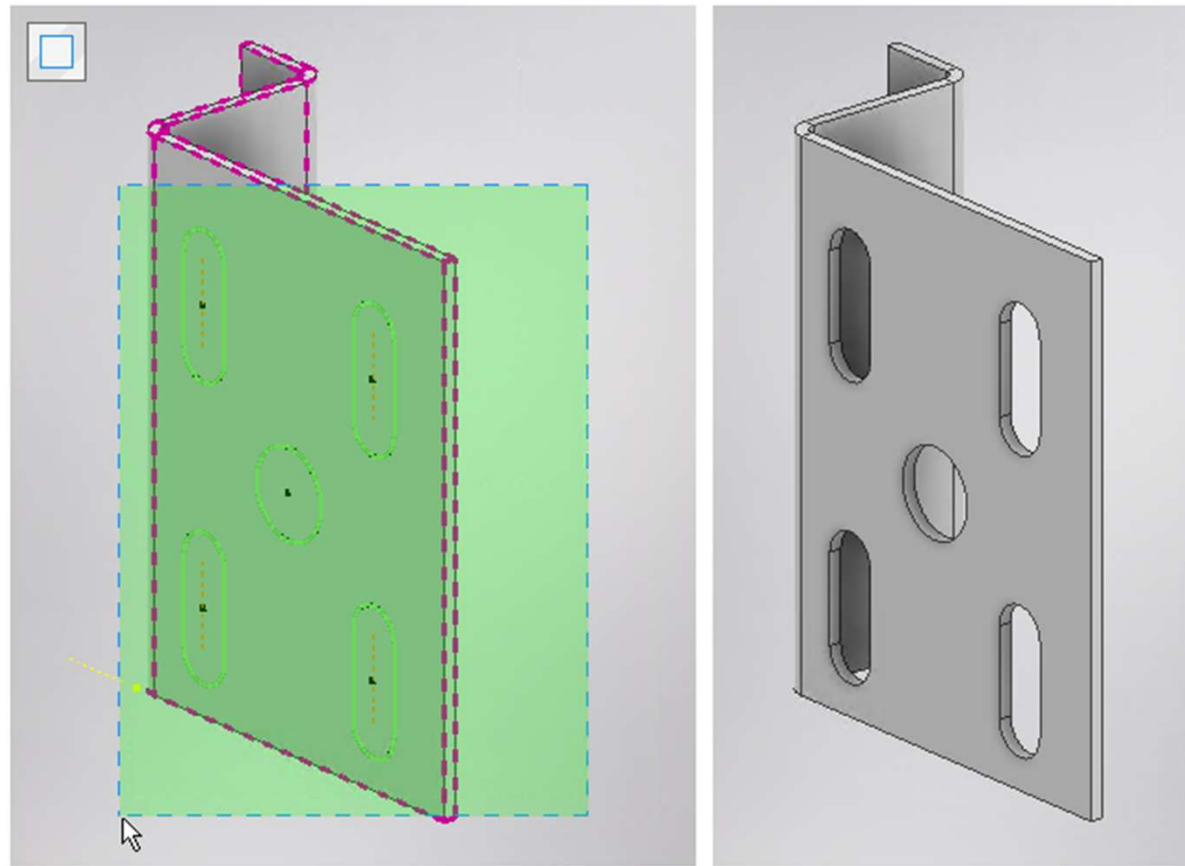


2022.1





2022.1

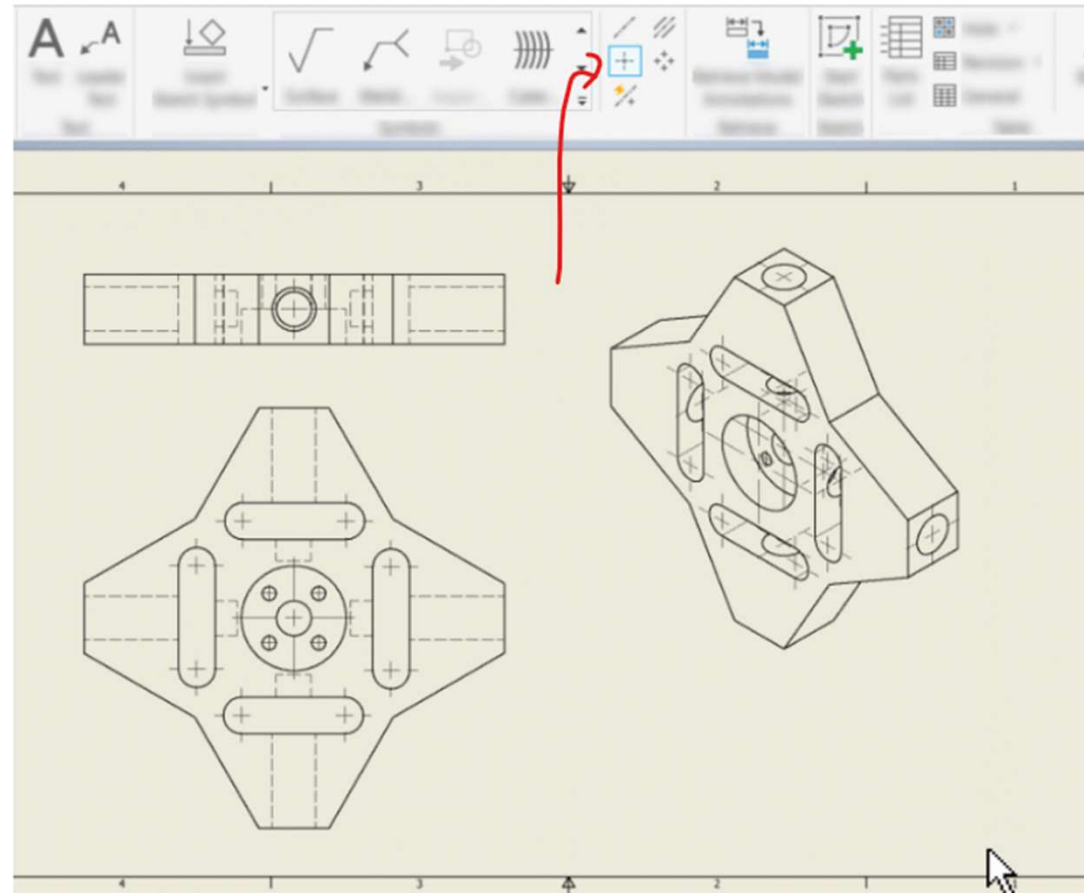




2022.2

### Drawing Center Marks

Use window select to add center marks to arcs and circles, including holes if desired.



2022.2

Bill of Materials [Gate.iam]

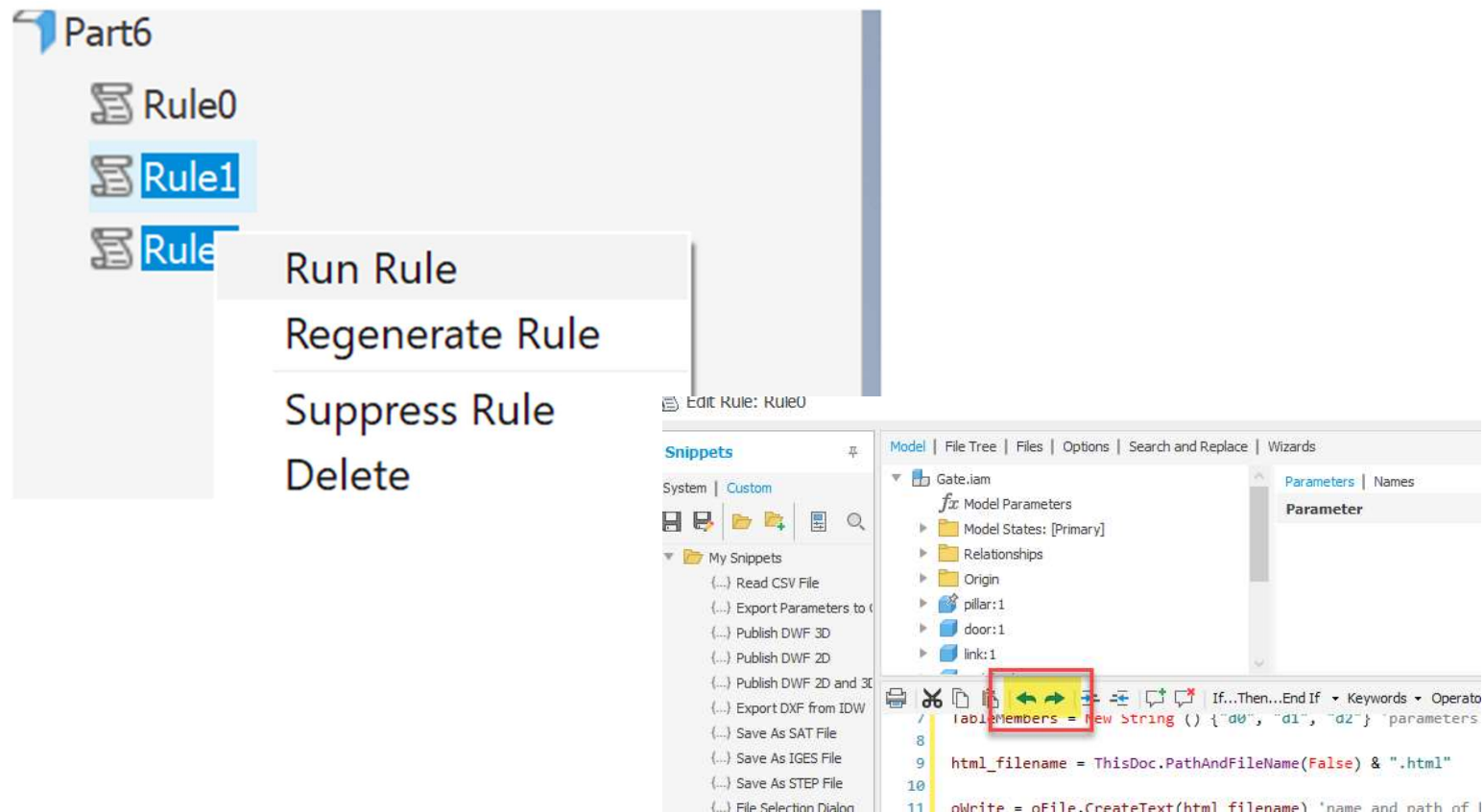
Model Data Structured Parts Only (Disabled)

Item	Part Number	BOM Structure	Unit QTY	QTY	Stock Number	Description	REV
1	Bati	Normal	Each	1			
2	door-mod	Normal	Each	1		Dør til Låge	-
3	Chape_Défaut	Normal	Each	1			
4	corps-vérin_Défaut	Normal	Each	1			
5	piston-tige_Défaut	Normal	Each	1			
6	bracket	Normal	Each	1			
7	ISO 4014 - M10 x 60	Purchased	Each	1		Hex-Head Bolt	
8	ISO 4014 - M8 x 40	Purchased	Each	1		Hex-Head Bolt	
9	DIN 6331 - M 10	Purchased	Each	1		Hex Nut	

Show Clear

Stock Number	Description	REV
	NTI	
	Dør til Låge	-
	NTI	
	NTI	
	NTI	
	Hex-Head Bolt	
	Hex-Head Bolt	
	Hex Nut	

2022.2



2022.3

### New Versions of AnyCAD Formats are Supported

Format	Version	Selective Import	Associative Update
CATIA V5	R6 - V5-6R2020	✓	✓
PTC Creo	Up to 8.0	✓	✓
PTC Wildfire	Up to 5.0	✓	✓
SolidWorks	2001 Plus - 2022	✓	✓
Siemens NX	Unigraphics V13 - NX 12, NX 1847, 1872, 1899, 1926, 1953 Series NX 1980 Series	✓	✓
Alias	v11 - Later	✓	✓
AutoCAD 2d	Up to 2018		✓
STEP	AP203E2, AP214, AP242	✓	✓
Solid Edge	V18 - V20, ST1 - ST10, 2019-2022	✓	✓