

# Vault 2023: Collaboration is Easier than Ever

- Continues to deliver a more modern, connected, and insightful experience



## Authors

### Focus on the work you love

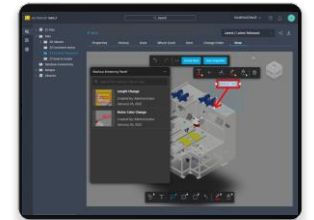
Improved AutoCAD integrated data experience, additional Model State support, and user interface enhancements



## Administrators

### Connect remote users easier

With VPN-less technology, remote access to data behind the firewall is easier with Vault Gateway



## Participants

### Better ways to provide feedback

Providing the ability to markup in multiple workflows with better management of markup history

# Instance Properties Support

## Customer Value

Access Instance Properties in Vault without having to go back to Inventor.

Hydration Phase 1  
Test Pressure = 45 bar

Purification  
Test Pressure = 12 bar

Oxidation  
Test Pressure = 22,5 bar

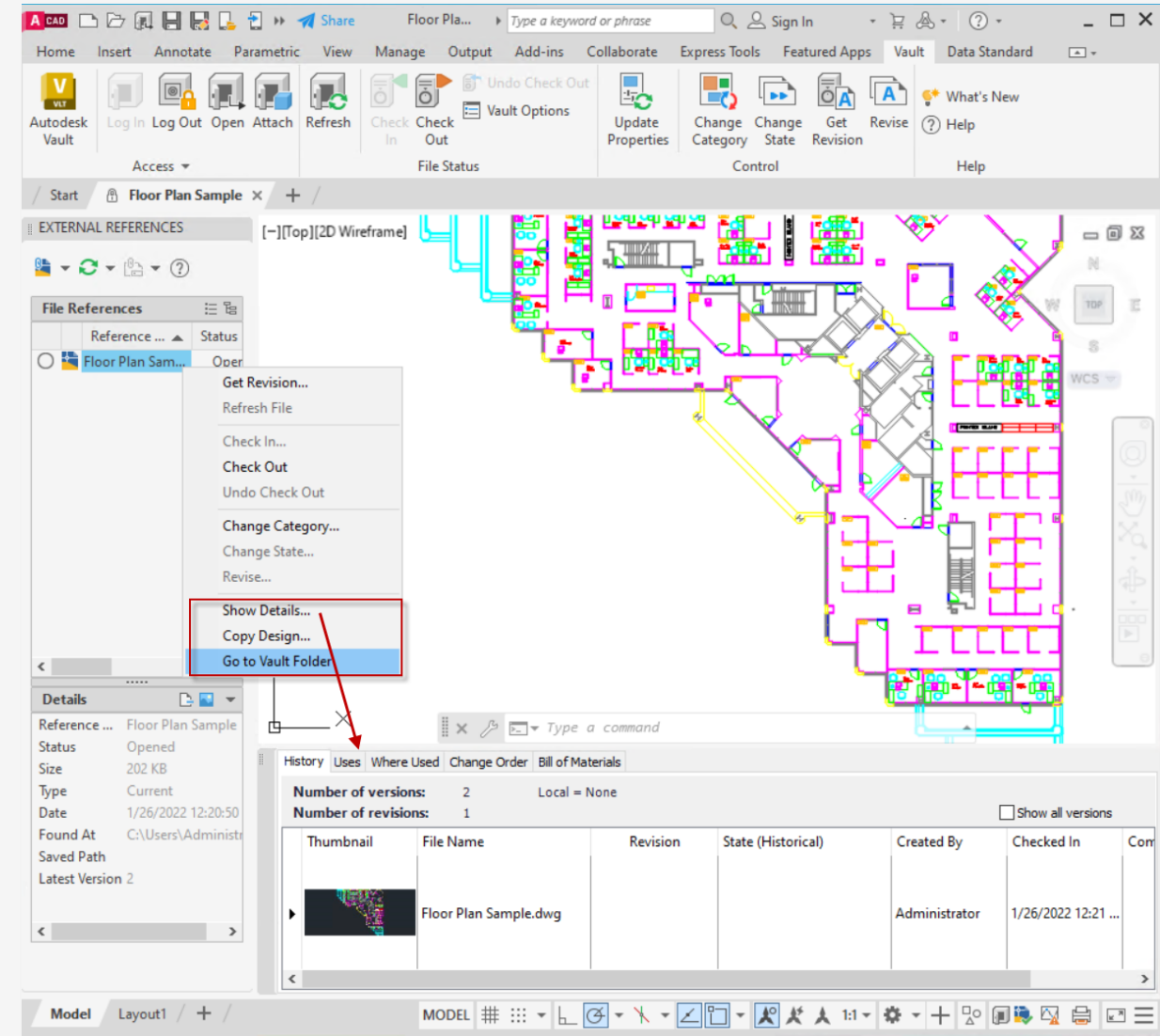
Item	Part Number	Functional Designation	BOM Structure	Unit	QTY	Assemble Comments
1	buffer assembly		Normal	Each	1	
2	VE-150 Vessel 2500L	Hydration Phase 1	Normal	Each	1	Test Pressure = 45 bar
51	VE-150 Vessel 2500L	Purification	Normal	Each	1	Test Pressure = 12 bar
52	VE-150 Vessel 2500L	Oxidation	Normal	Each	1	Test Pressure = 22,5 bar
35	Datum		Normal	Each	1	
9	50-PD-P011510-004		Normal	Each	1	
50	50-PD-P011500-004:1		Normal	Each	1	
49	50-P-P011500-001:1		Normal	Each	1	
6	50-P-P011500-001		Normal	Each	2	
48	50-CWS-U019308-026:1		Normal	Each	1	

Number	Po...	Item Qty	Title (Item,CO)	Functional Designation	Re...	State (Histori...	Assemble Comments
SCR004 Buffer Preparation Skid	-	-	SCR004 Buffer Prep...	-	A	Work in Progress	-
buffer assembly	1	1	buffer assembly		A	Work in Progress	
VE-150 Vessel 2500L	2	2	VE-150 Vessel 2500L	Oxidation	A	Work in Progress	Test Pressure = 22,5 bar
VE-150 Vessel 2500L	2	2	VE-150 Vessel 2500L	Purification	A	Work in Progress	Test Pressure = 12 bar
VE-150 Vessel 2500L	2	2	VE-150 Vessel 2500L	Hydration Phase 1	A	Work in Progress	Test Pressure = 45 bar
100005	3	3	A-Plattform		A	Work in Progress	
50-CWR-P011500-020	4	4	50-CWR-P011500-020		A	Work in Progress	
50-CWR-P011500-020	4	4	50-CWR-P011500-020		A	Work in Progress	

# AutoCAD Add-in Enhancements

## Customer Value

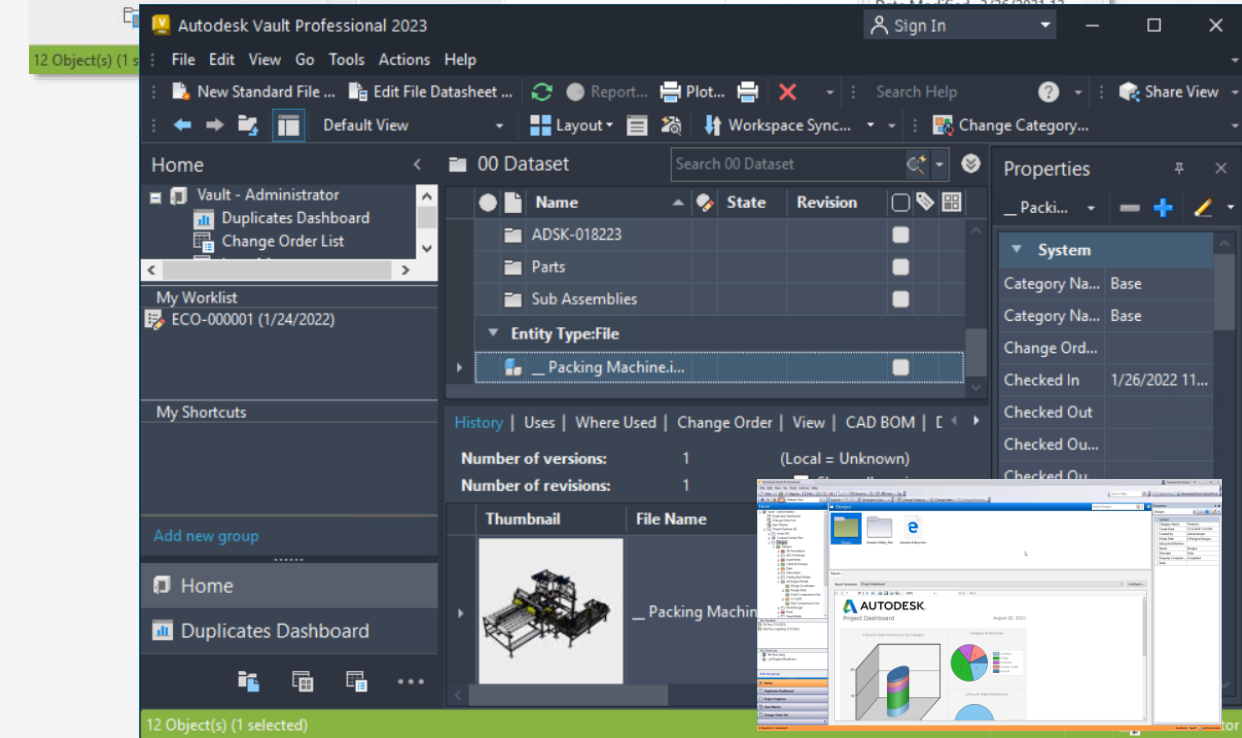
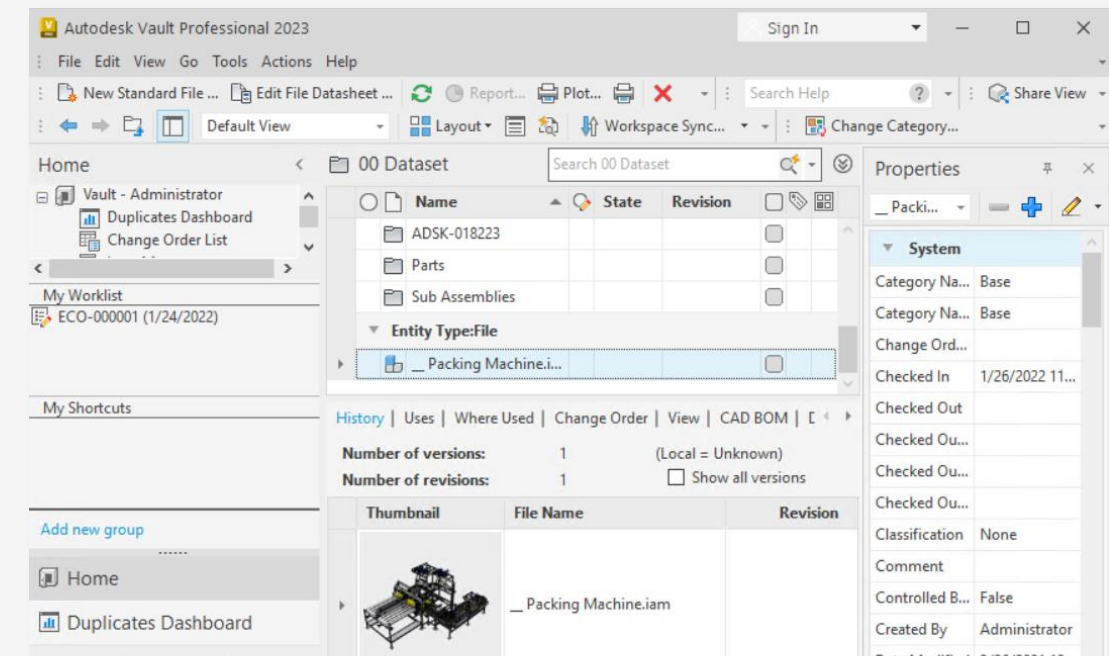
Focus on your design tasks while accessing data management capabilities for optimum efficiency



# User Interface Enhancements

## Customer Value

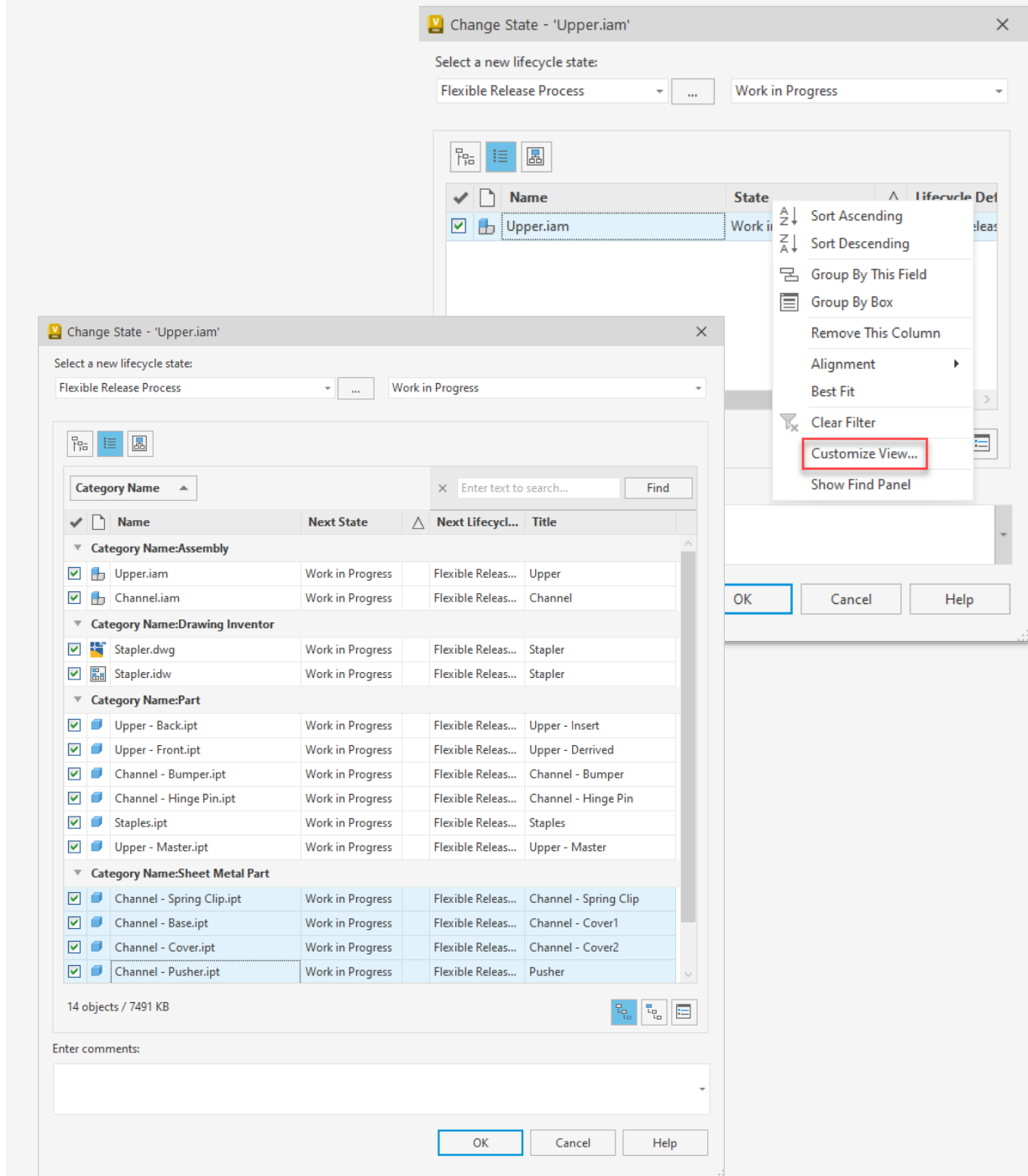
Users will have a consistent, cohesive visual experience using the Vault desktop, thin, and mobile clients.



# Column customization in multiple dialogs

## Customer Value

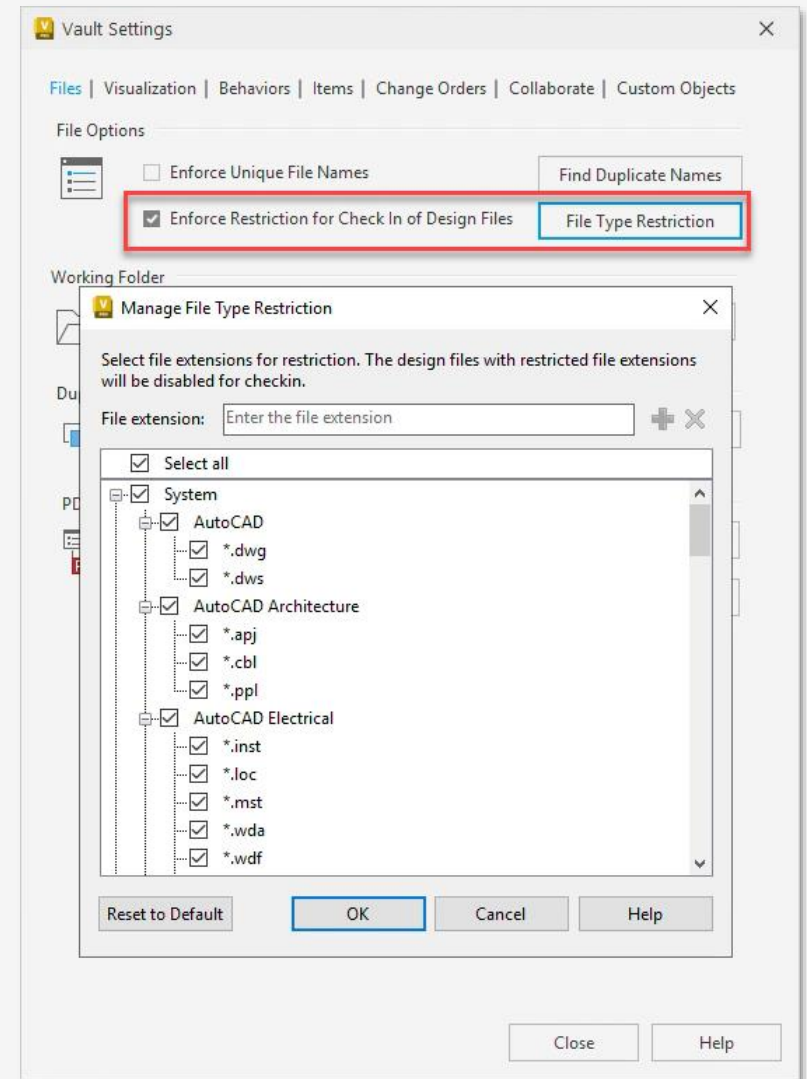
Access to valuable data while performing essential tasks and workflows in Vault through customization options.



# Design file restriction

## Customer Value

Administrators have more flexibility in restricting the files added to Vault through the Vault client.



# Design file restriction

## Scope

### ■ Add-in and API Access

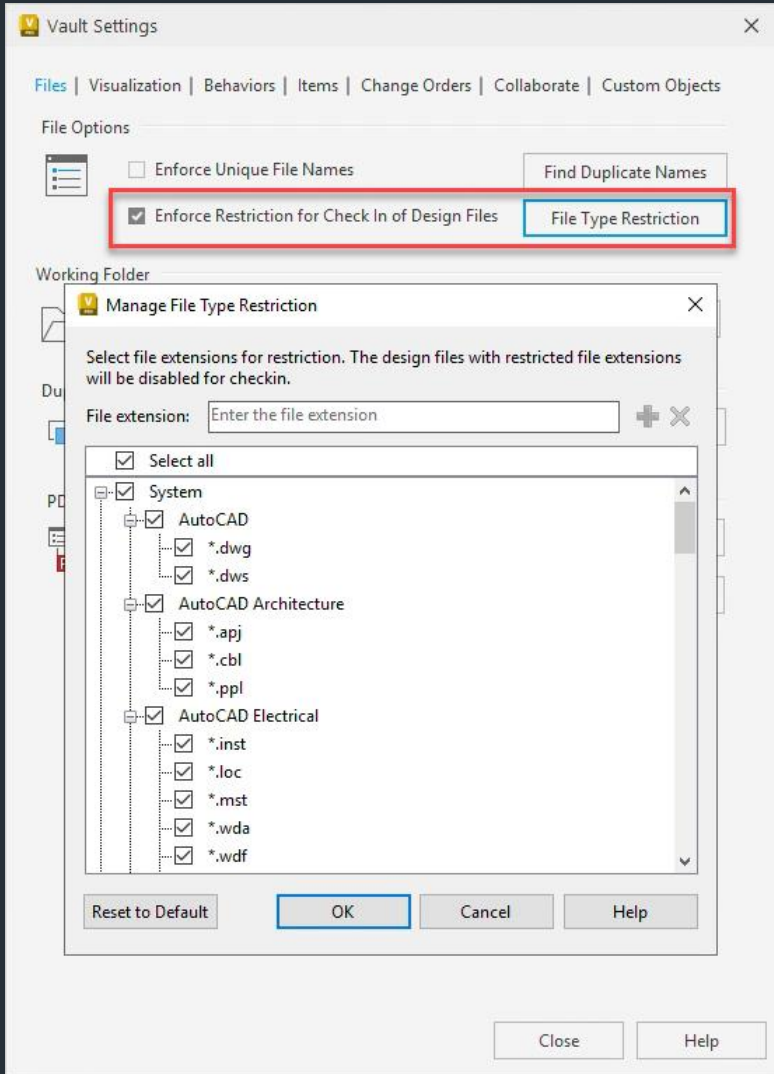
✓ Enforce = published

■ File Type Restriction = not published

⇒ Extensions need to implement type-based restrictions individually

⇒ E.g., iLogic-Vault implemented restrictions

⇒ `iLogicVault.AddFile()`

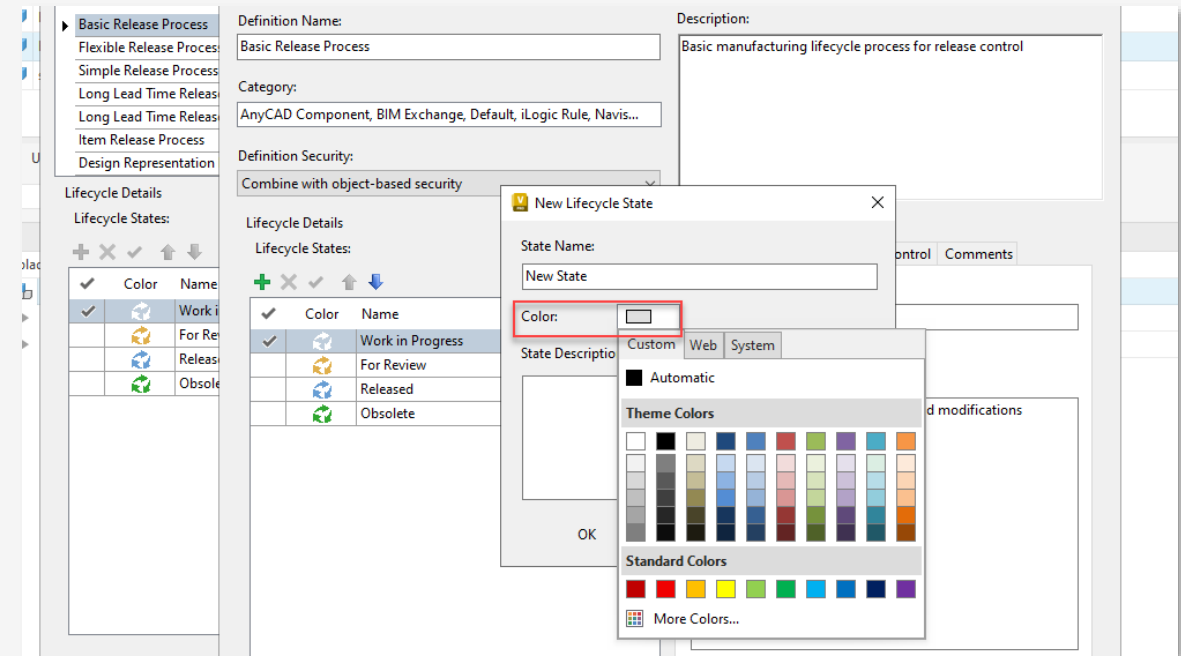




# Lifecycle state colors

## Customer Value

Users can easily recognize the state of files in the file grid by color like categories.

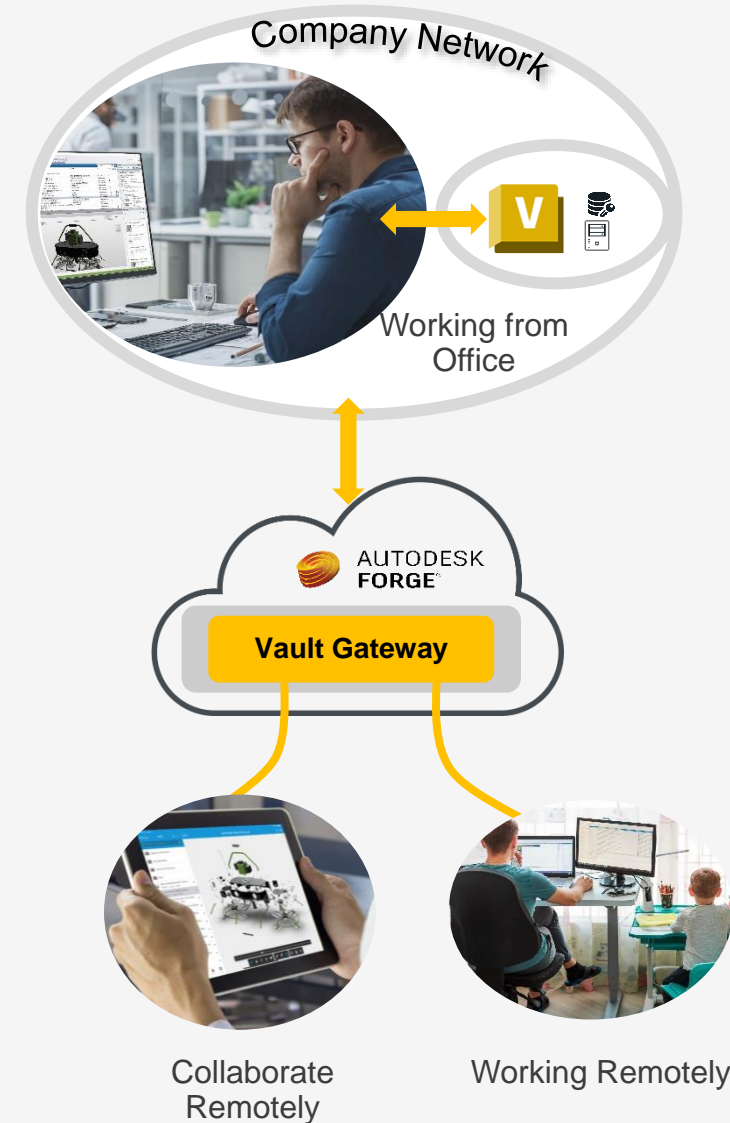




# Vault Gateway

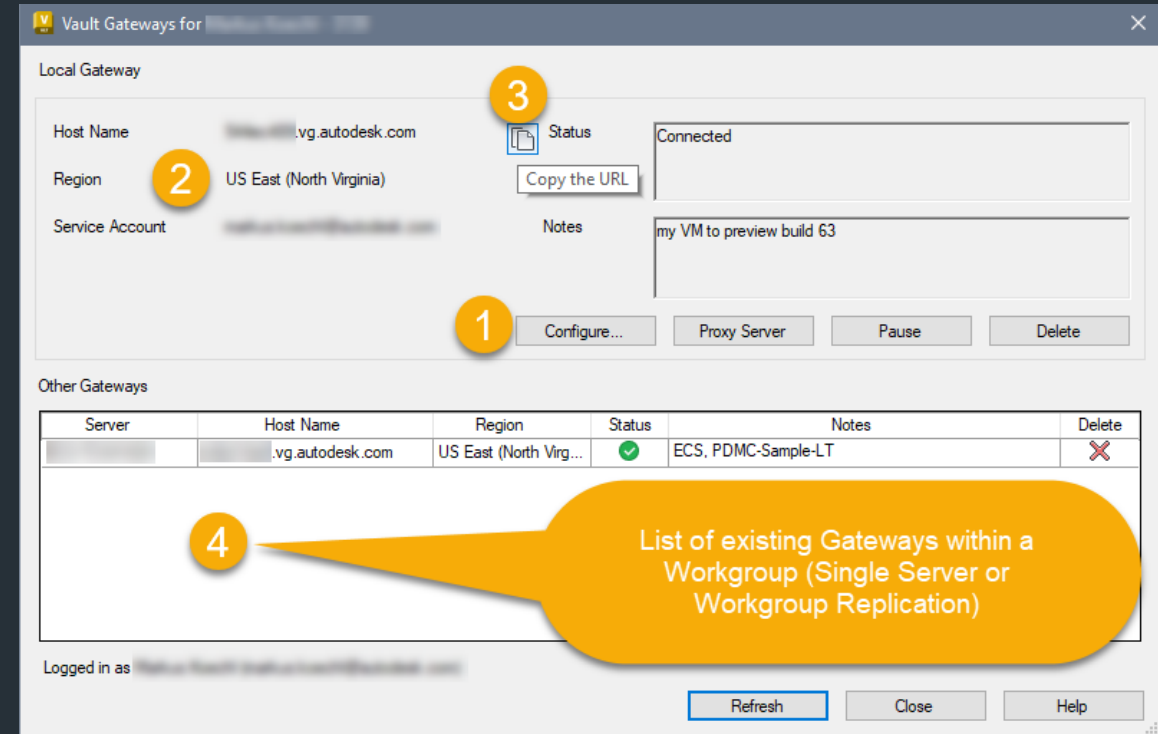
## Customer Value

Vault Gateway allows better collaboration with suppliers and 3rd party collaborators. There is no need to create domain accounts for these users and give them VPN access.



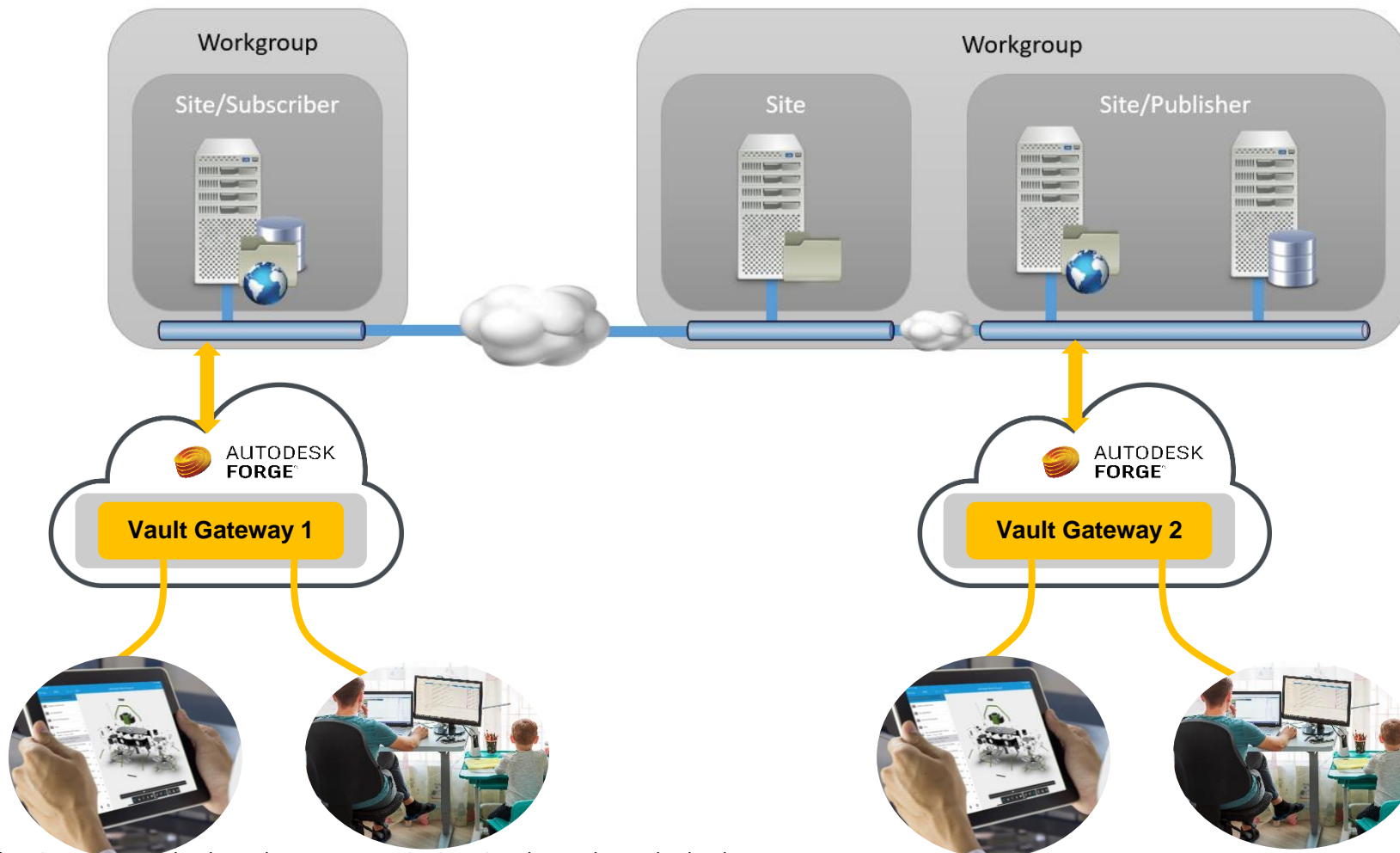
# Vault Gateway

- Instant configuration
  - Add configuration by logging in to your service account (1)
  - Select Region (US, Ireland) (2)
  - Copy and Share unique, secure connection URL (3)
- Gateway Administrator = Autodesk Account team administrator
  - Keep the overview of existing Gateways within a workgroup (4)



# Vault Gateway

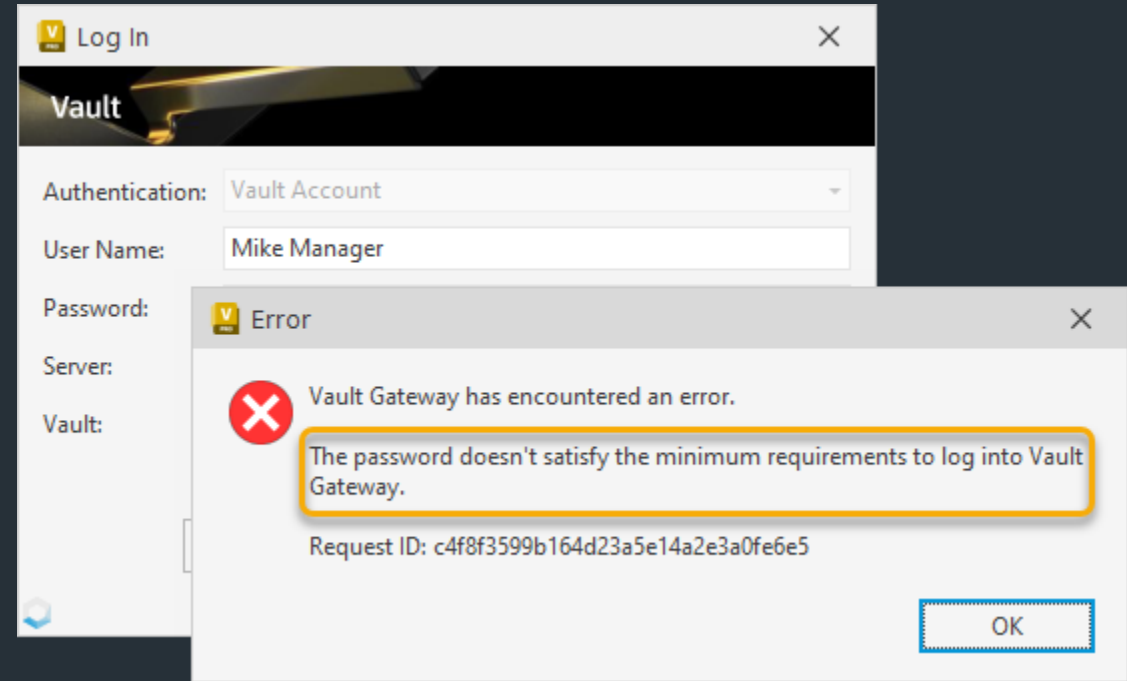
Connected Workgroups | Multiple Gateways



# Vault Gateway

## Security

- SSL connection
- Optional Proxy Server Authentication
- No firewall exceptions required
- Password minimum requirements
  - 8 or more characters, one number and letter
- Windows authentication does not apply for domain independency



### Password Complexity

Your account password must satisfy Vault Gateway's password complexity requirements to sign in.

Passwords must contain eight or more characters, with at least one number and letter.

**Note:** The following are valid special characters: !"#\$%&'()\*+,-./:;<=>?@[\\]^\_`{|}~

<https://help.autodesk.com/view/VAULT/2023/ENU/?guid=GUID-81EBA415-CE0F-427F-92CF-80BBF16374B0>

# Vault Gateway

## Performance metrics considerations

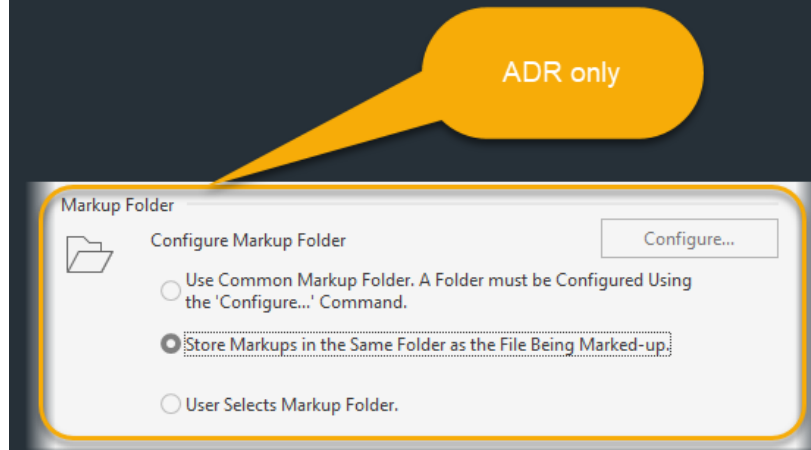
- Vault Gateway primarily addresses
  - Connection security
  - Provide access control without
    - AD account requirements
    - VPN access requirements
- Vault Gateway balances
  - Security requirements
  - WAN network barriers
  - Administrative efforts



# Markups

## Technical Insights

- Markup Data save as entity attributes per file version
  - Access/create markup data in Document or ECO context
  - Markup edits do not alter file versions
- Markup Snapshots save as file system file
  - Available in Vault Explorer and Thin Client
  - Markup on historical version/revision save as Snapshot only
- Legacy Markup for Design Review remains as an option
  - Configuration Options target ADR markups only



# Inventor Read-Only Mode

## Customer Value

More flexibility to control how Inventor files are viewed.

