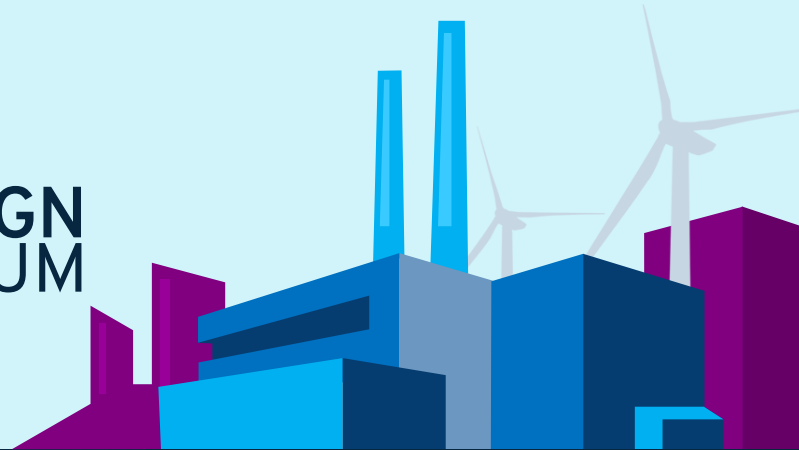




2022
INDUSTRI&DESIGN
FORUM

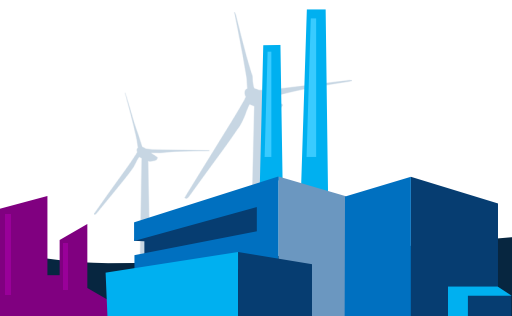


Projektstandardisierung & hybridlayouts

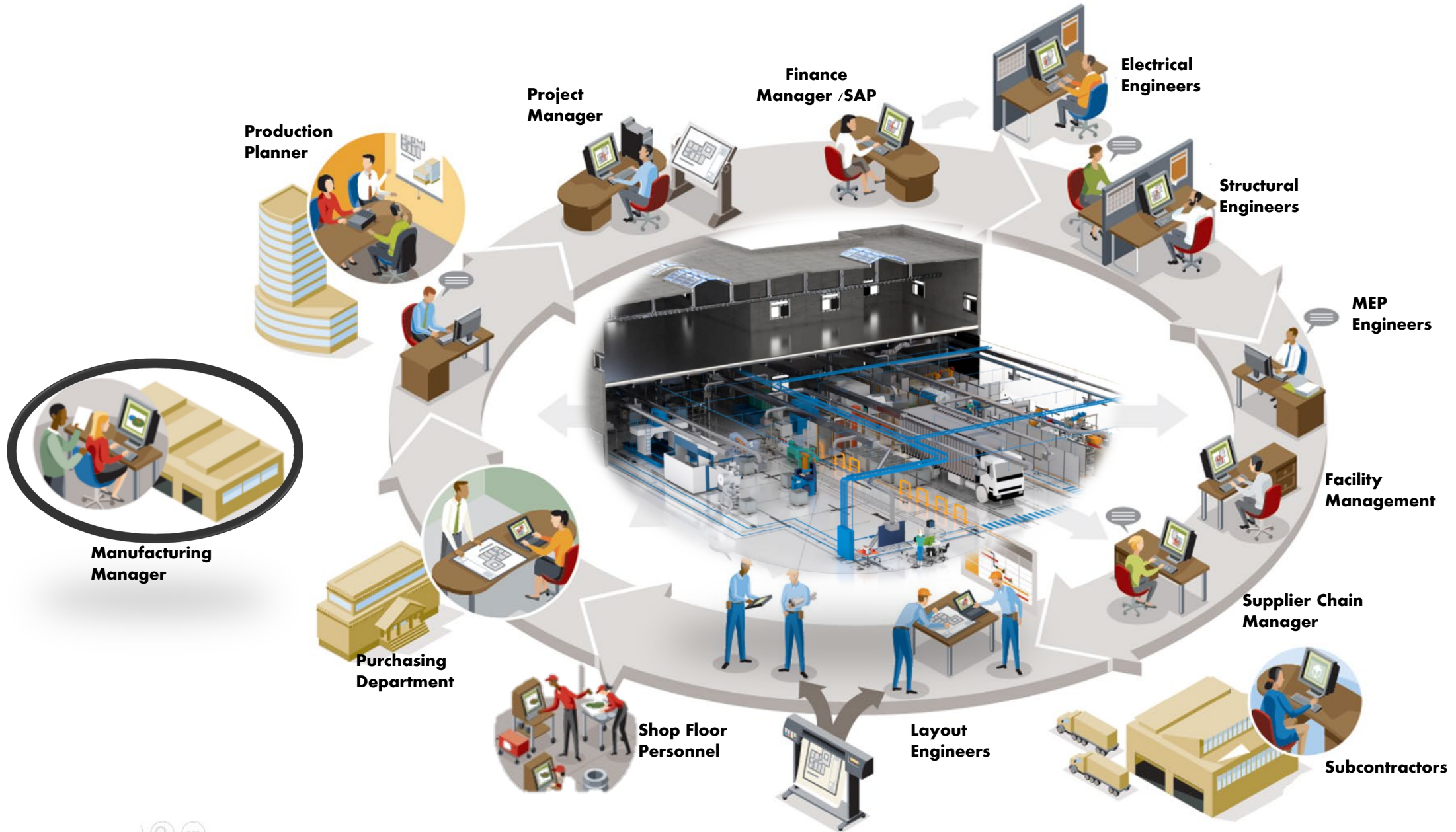


WHO AM I ?!

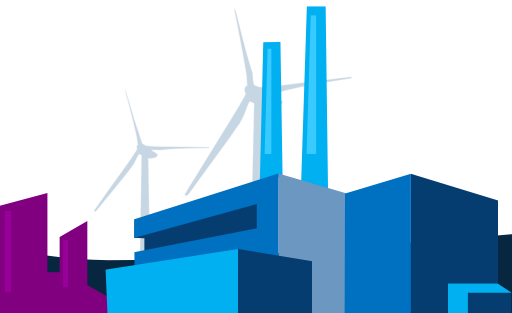
- Michael Kjærgaard
- 10 år i NTI A/S
- System konsulent, System Arkitekt, Projektleder
- 21 år med Autodesk produkter

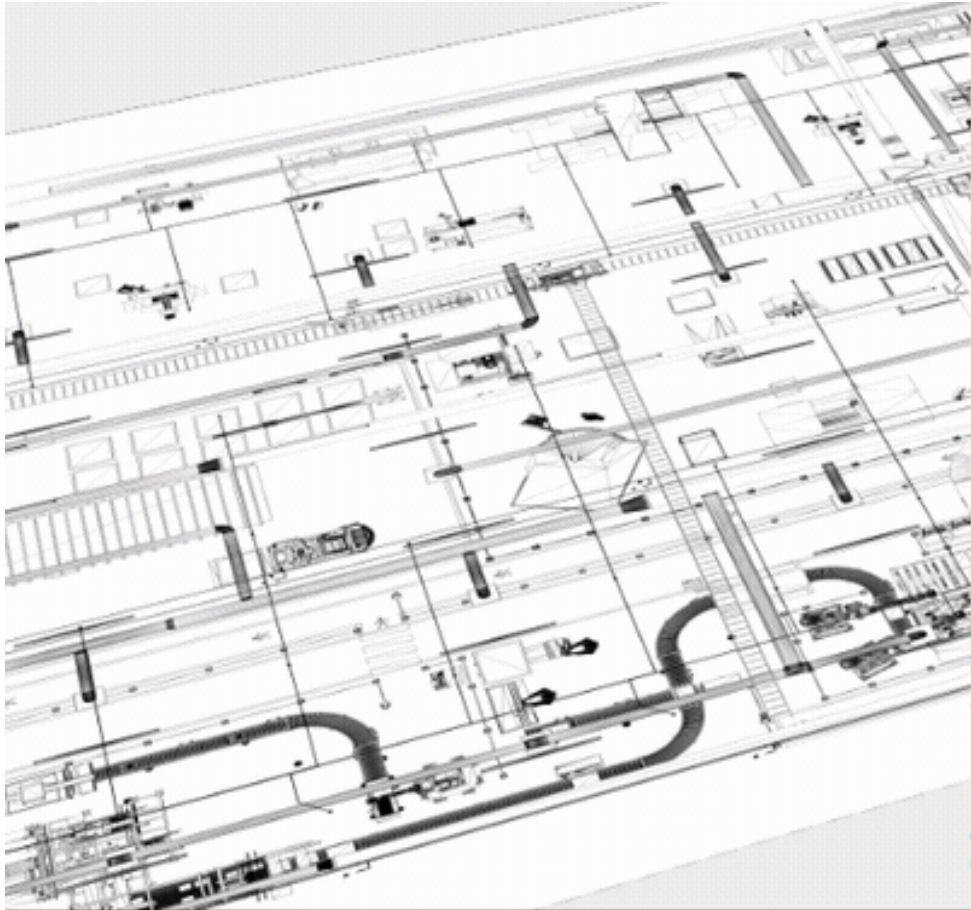


Processer og Informationsmodel I centrum



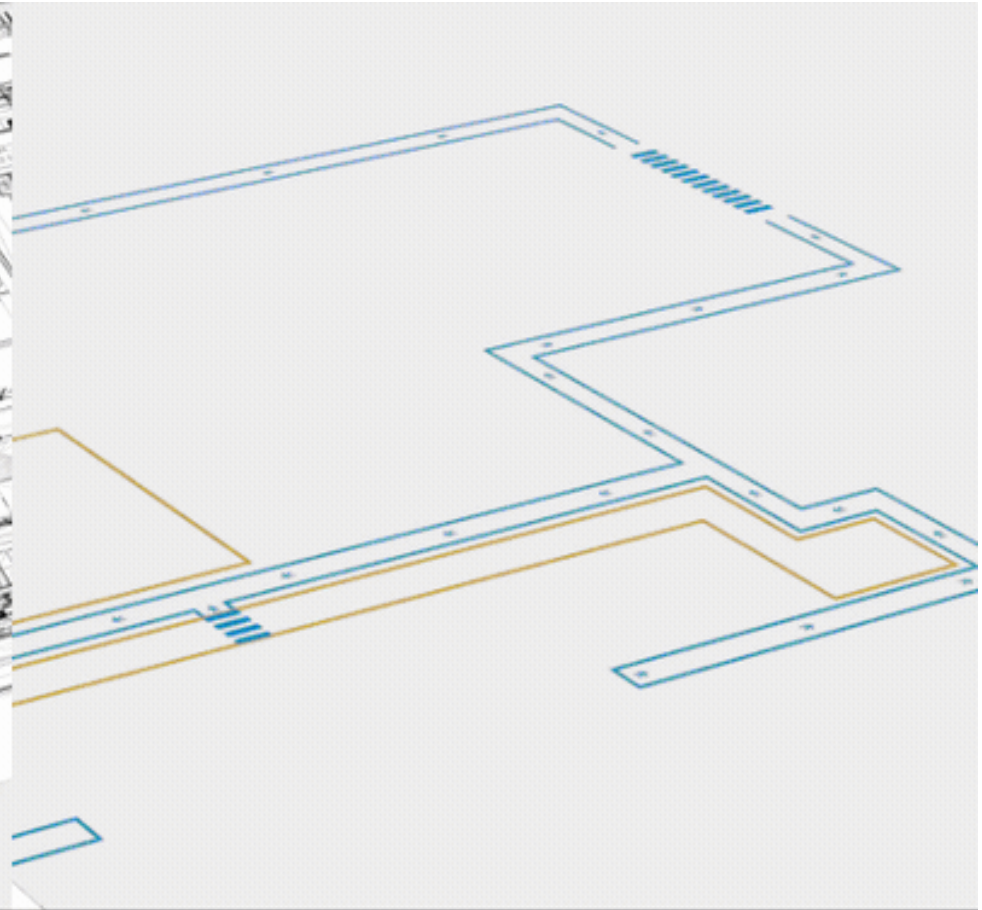
Working in silos





Facilities / MEP

Building Information Modeling (BIM)

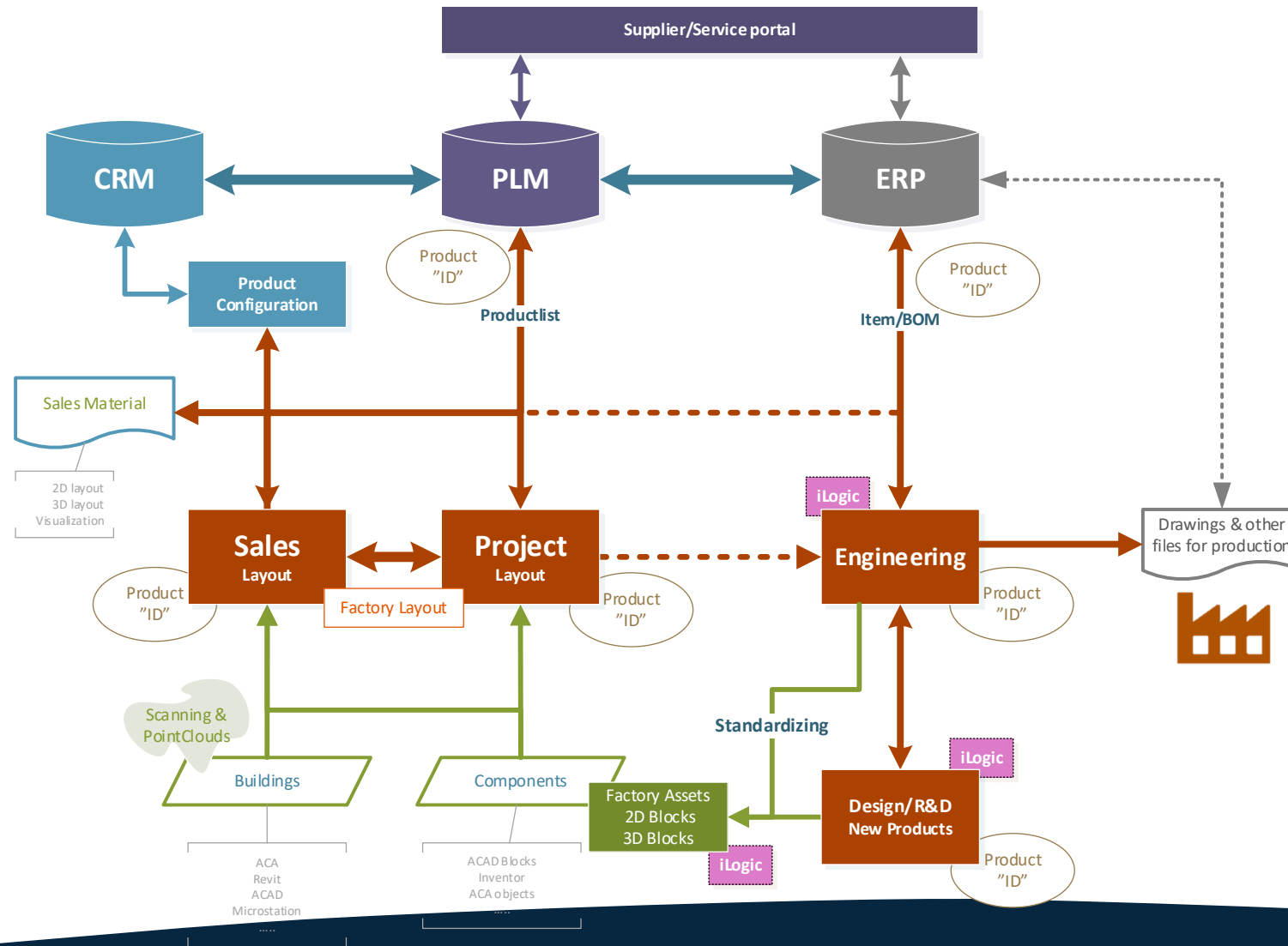


Production / Engineering

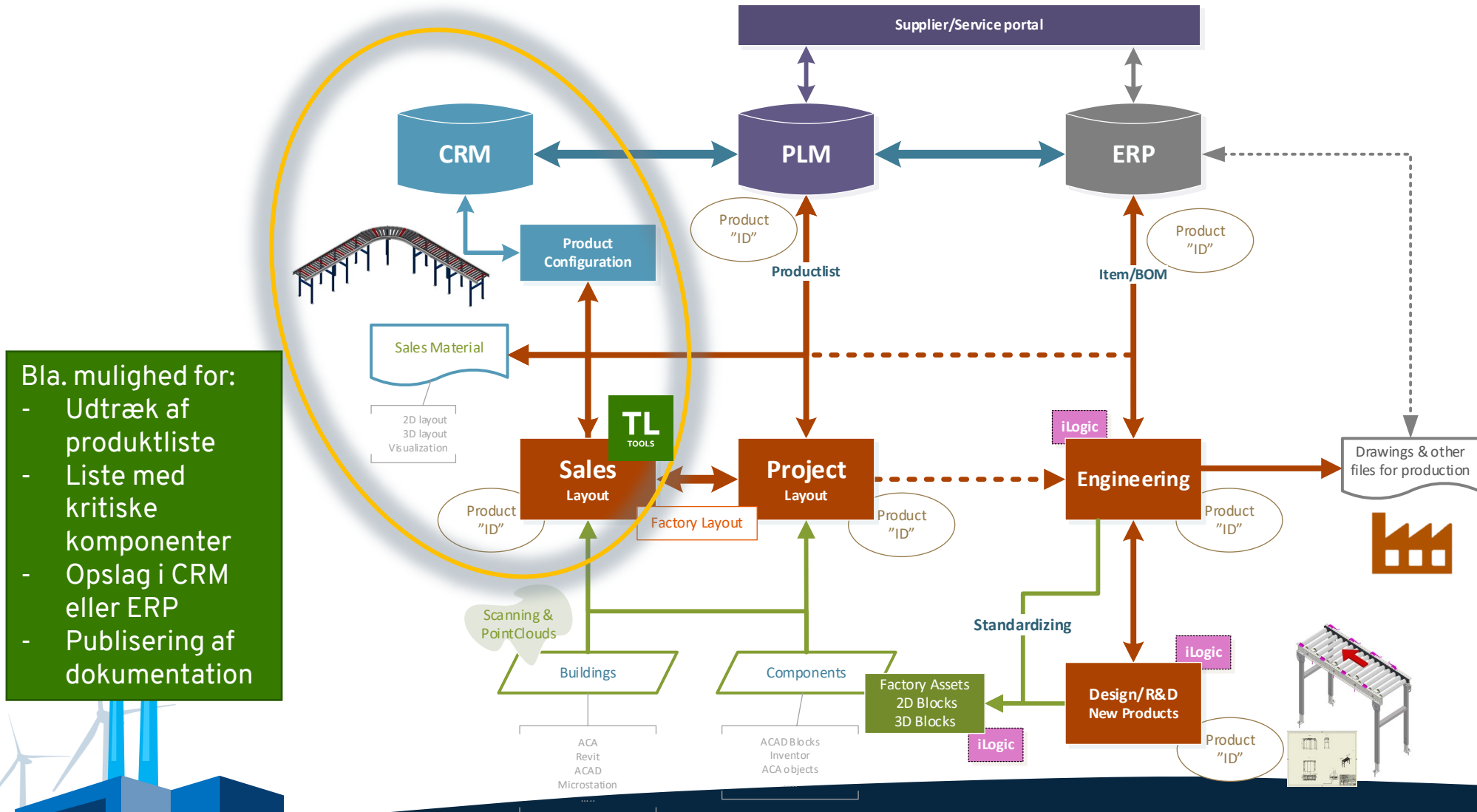
Digital Factory



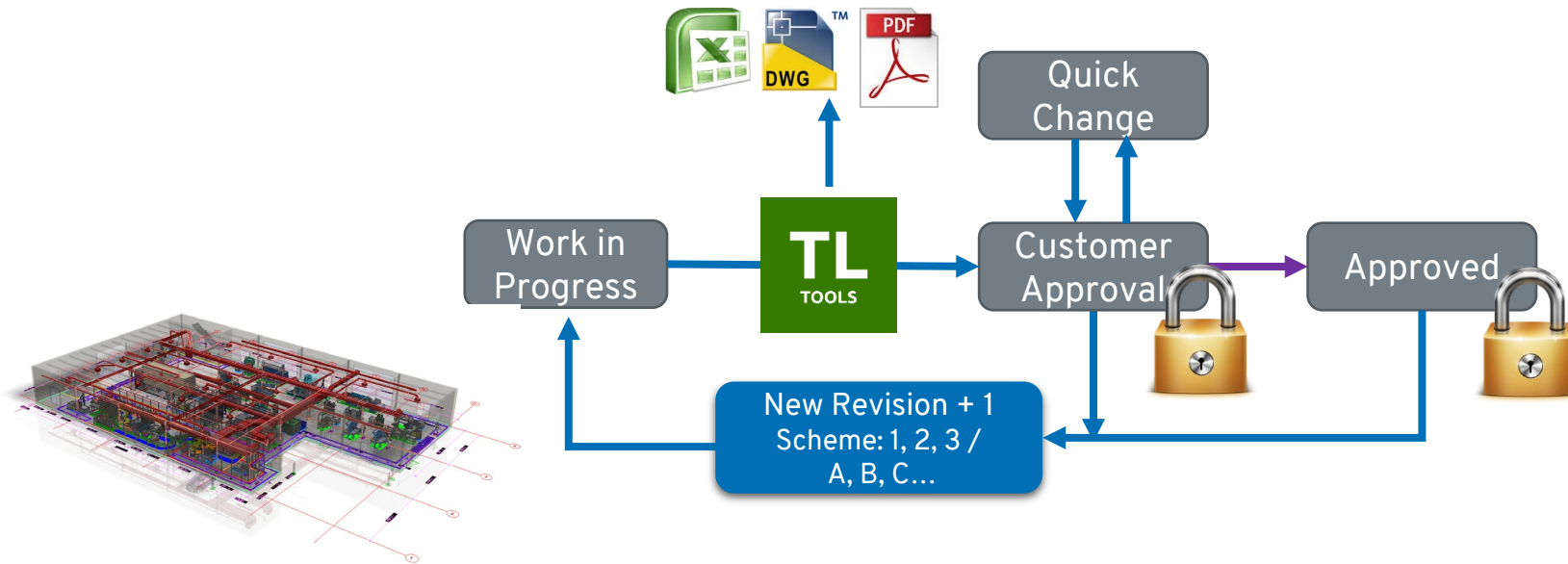
Eksempel på snitflader

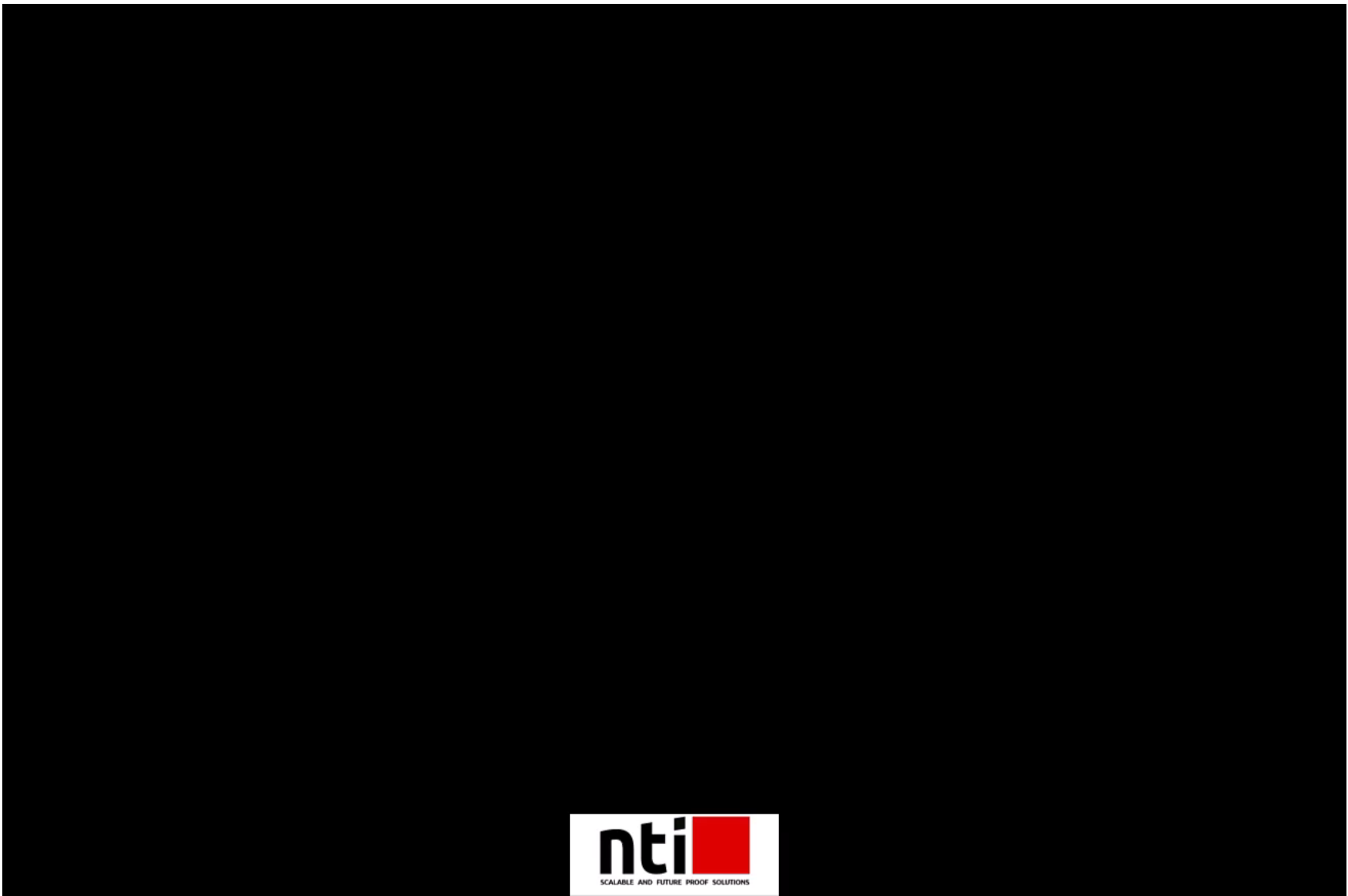


Eksempel på optimeret designproces



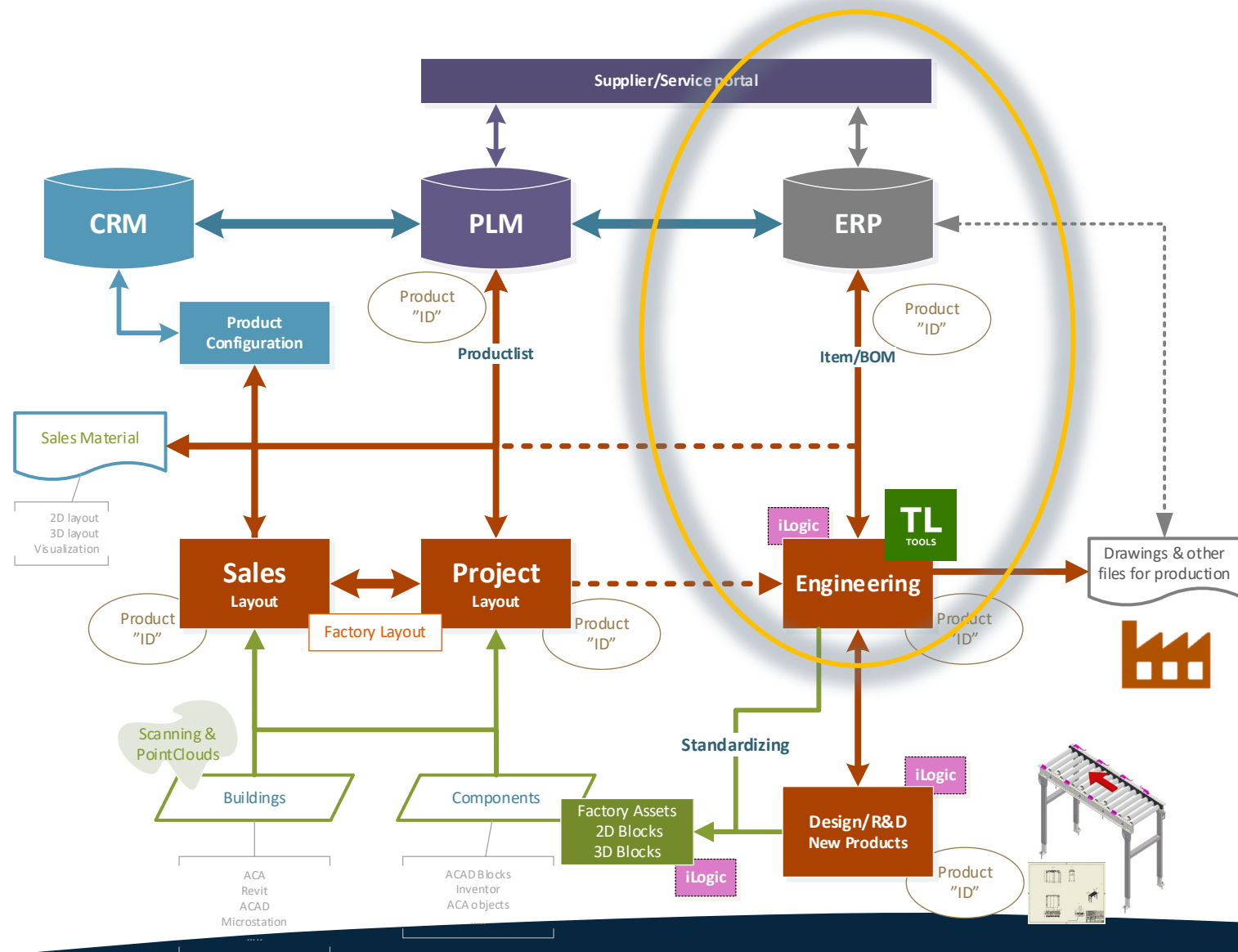
Eksempel på godkendelsesflow for layout



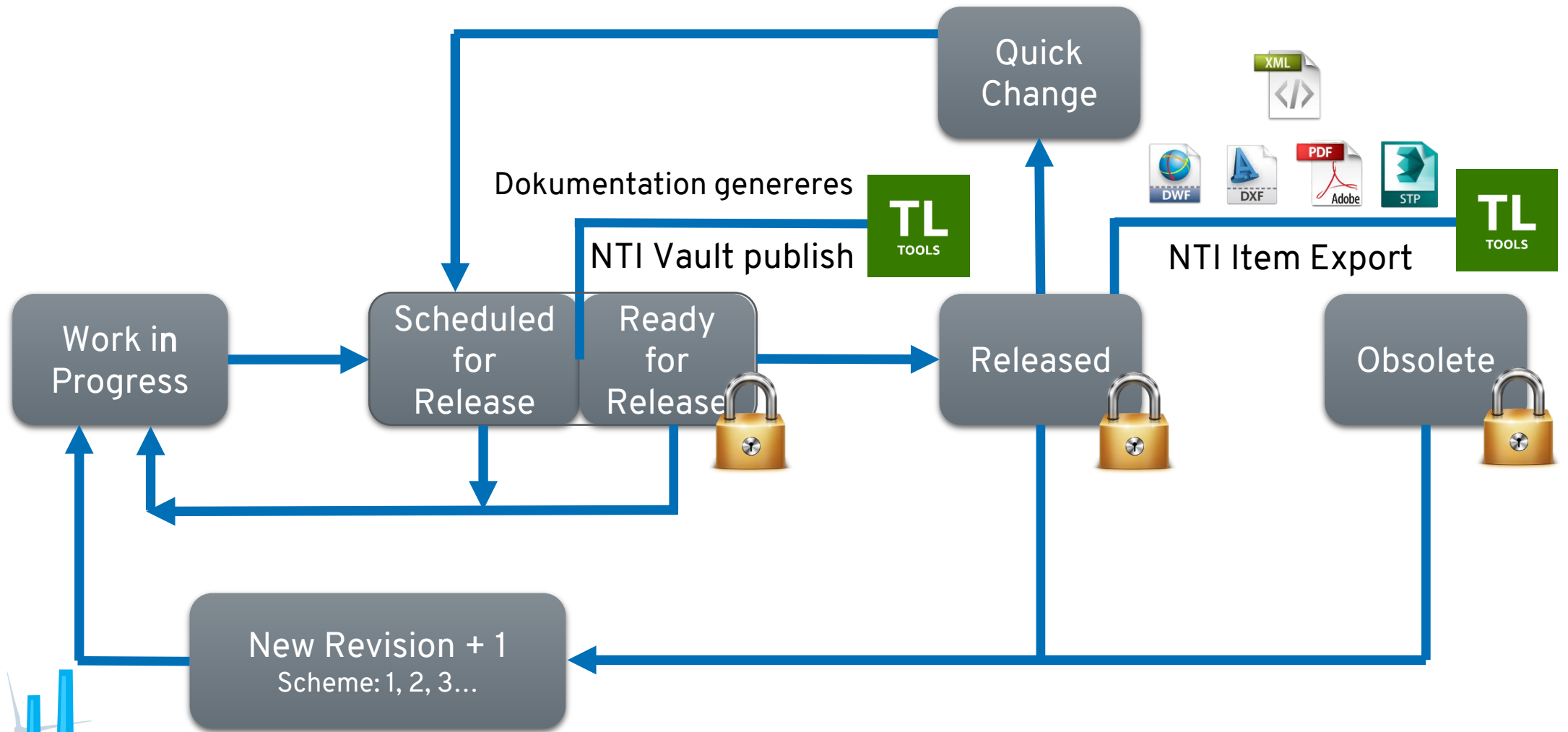


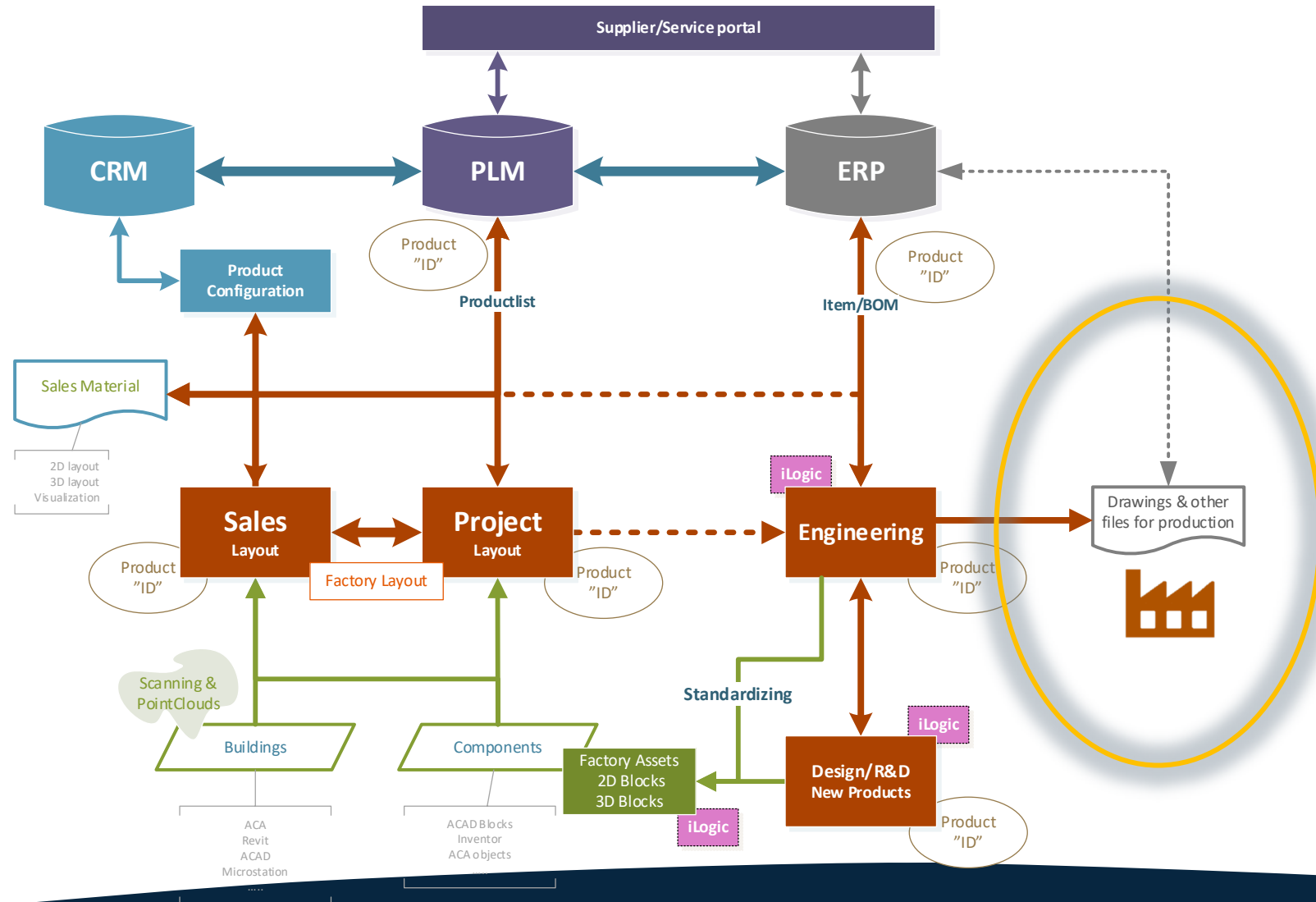
Bla. mulighed for:

- Publisering af dokumentation
- Overførsel af BOM til ERP

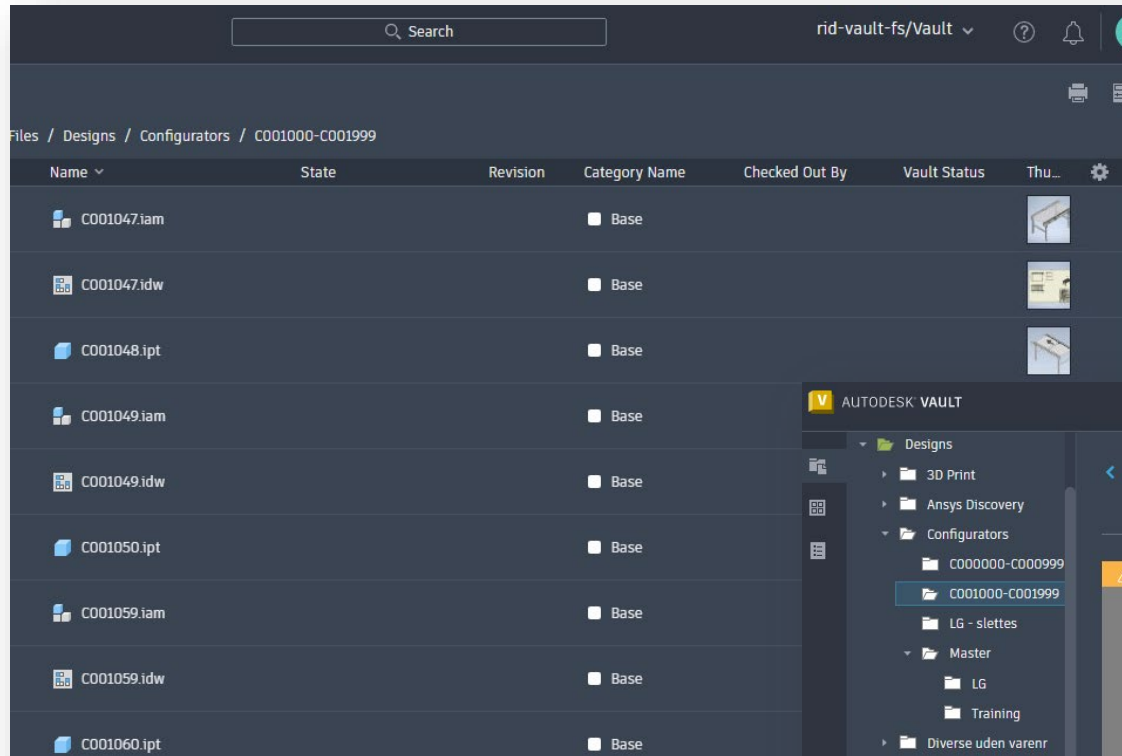


Eksempel på godkendelsesflow for Items





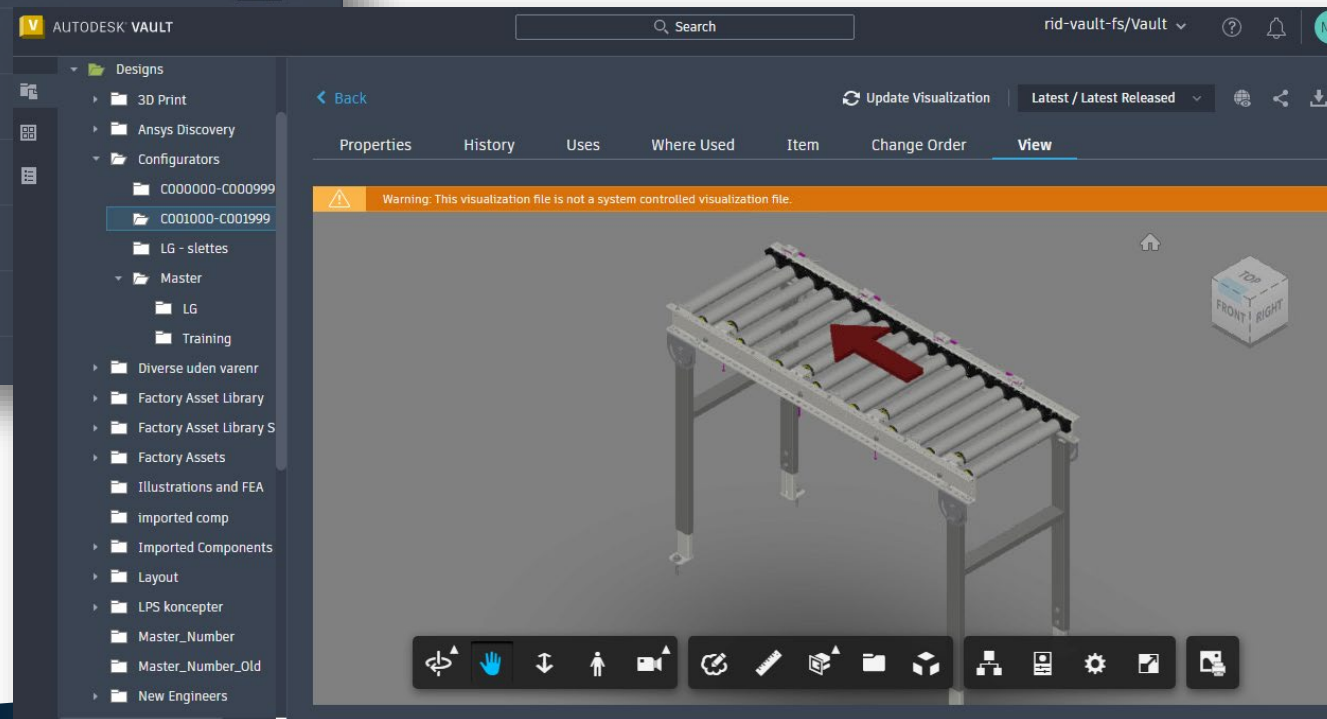
Web client i produktion



Files / Designs / Configurators / C001000-C001999

Name	State	Revision	Category Name	Checked Out By	Vault Status	Thumbnail
C001047.iam			Base			
C001047.idw			Base			
C001048.ipt			Base			
C001049.iam			Base			
C001049.idw			Base			
C001050.ipt			Base			
C001059.iam			Base			
C001059.idw			Base			
C001060.ipt			Base			

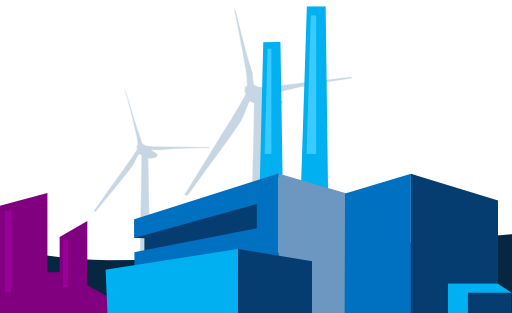
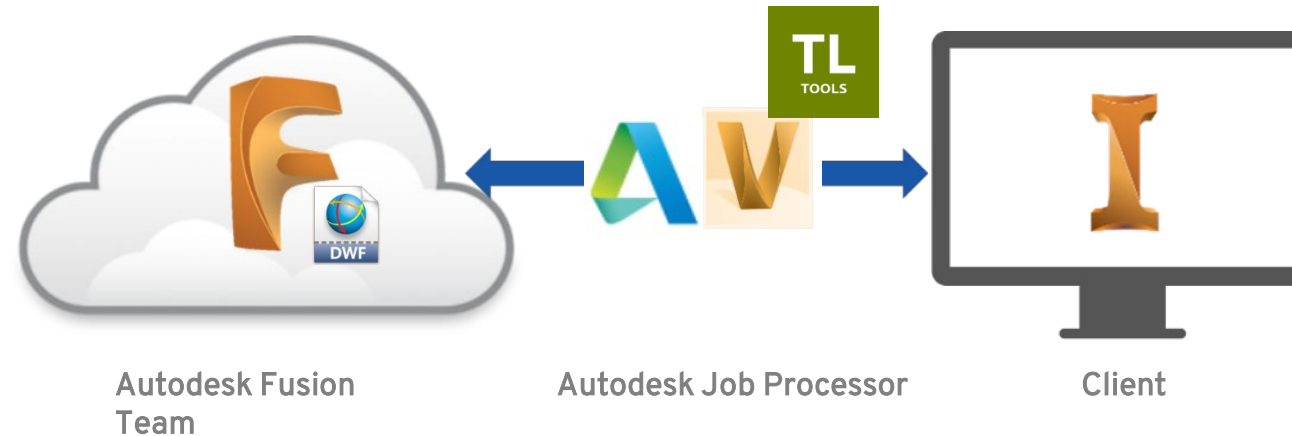
- Ubegrænsede antal gratis klienter
- læseadgang direkte til de godkendte tegninger



Fusion Team, Cloud Collaboration

Optimere processen for ekstern og intern review

- Via release proces i Autodesk Vault Professional publiceres layouts og produkter til Fusion Team
- Publicering sker via Autodesk Job Processor
- Kan ske manuelt også



Autodesk Vault Professional 2021

File Edit View Go Tools Actions Help

New Report... Plot... Check In... Find... NTI TOOLS ACW Share View Download from Cloud Drive Upload to Cloud Drive Search Help

Default View Layout Workspace Sync... Change Category... Change State... Change Revision...

Home

- Item Master
- Project Explorer (\$)
- Content Center Files
- Designs
 - Masters
 - Projects
 - 4711 NTI
 - 4712 NTI
 - 4713 NTI
 - Parts
 - Special
 - Purchased Components
 - Standard Components

My Worklist

My Shortcuts

Add new group

Home

Duplicates Dashboard

Project Explorer

Test

Item Master

Change Order List

Assemblies

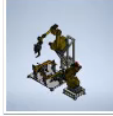
Search Assemblies

Name	Title	Description	Material	Date File Created	Date Modified
Folder					
200-101					
File					
000-000f.iam	Welding Robot fo...	Welding Station		12-10-2004	24-09-2020 21:30
000-000f.idw				24-09-2020	24-09-2020 21:39
000-001f.iam	FINAL ASSEMBLY	TWO STATION CLA...		09-02-2005	24-09-2020 21:30
100-150f.iam	JIG ASSEMBLY	MAIN JIG		02-04-2004	24-09-2020 21:30
100-200f.iam	JIG ASSEMBLY	VERTICAL MOUNTI...		02-04-2004	24-09-2020 21:30
200-000.iam	ROBOT	WELDING ROBOT		18-10-2004	24-09-2020 21:33
200-001.iam	WELDED ASSEMB...	MAIN SUB-FRAME		23-01-2005	24-09-2020 21:30
200-101.iam	JIG ASSEMBLY	LOCATOR, TYPE-3		01-04-2004	24-09-2020 21:30
200-102.iam	CLAMP ASSEMBLY	ARM, TYPE-1		19-09-2004	24-09-2020 21:32
200-103.iam	PIN BLOCK ASSE...	SHORT PIN		15-09-2004	24-09-2020 21:32
200-106.iam	WELDED ASSEMB...	ANGLE BRACKET		11-10-2004	24-09-2020 21:33
200-200.iam	LOCATOR ASSEM...	TYPE-2		17-09-2004	24-09-2020 21:32
200-201f.iam	WELDED ASSEMB...	VERTICAL MOUNTI...		09-10-2004	24-09-2020 21:32

History Uses Where Used Change Order Preview Documentation Drawings

Number of versions: 4 (Local = Unknown)

Number of revisions: 1 ☐ Show all versions

Thumbnail	File Name	Revision	State (Historical)	Created By	Checked In	Comment
	000-000f.iam	0	For Review	Administrator	24-09-2020 21:57	Under review

32 Object(s) (1 selected)

desktop-lrjdfeb Vault Administrator

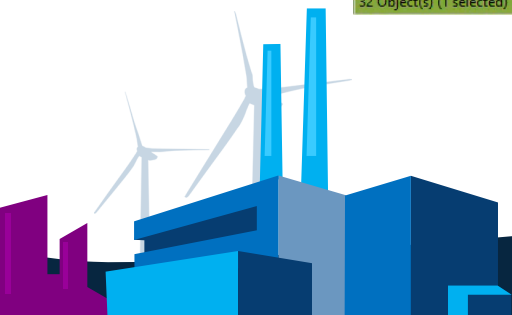
Properties

000-000f.iam

System

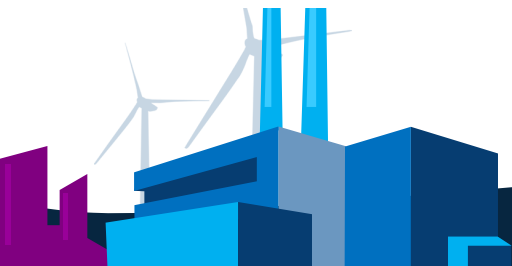
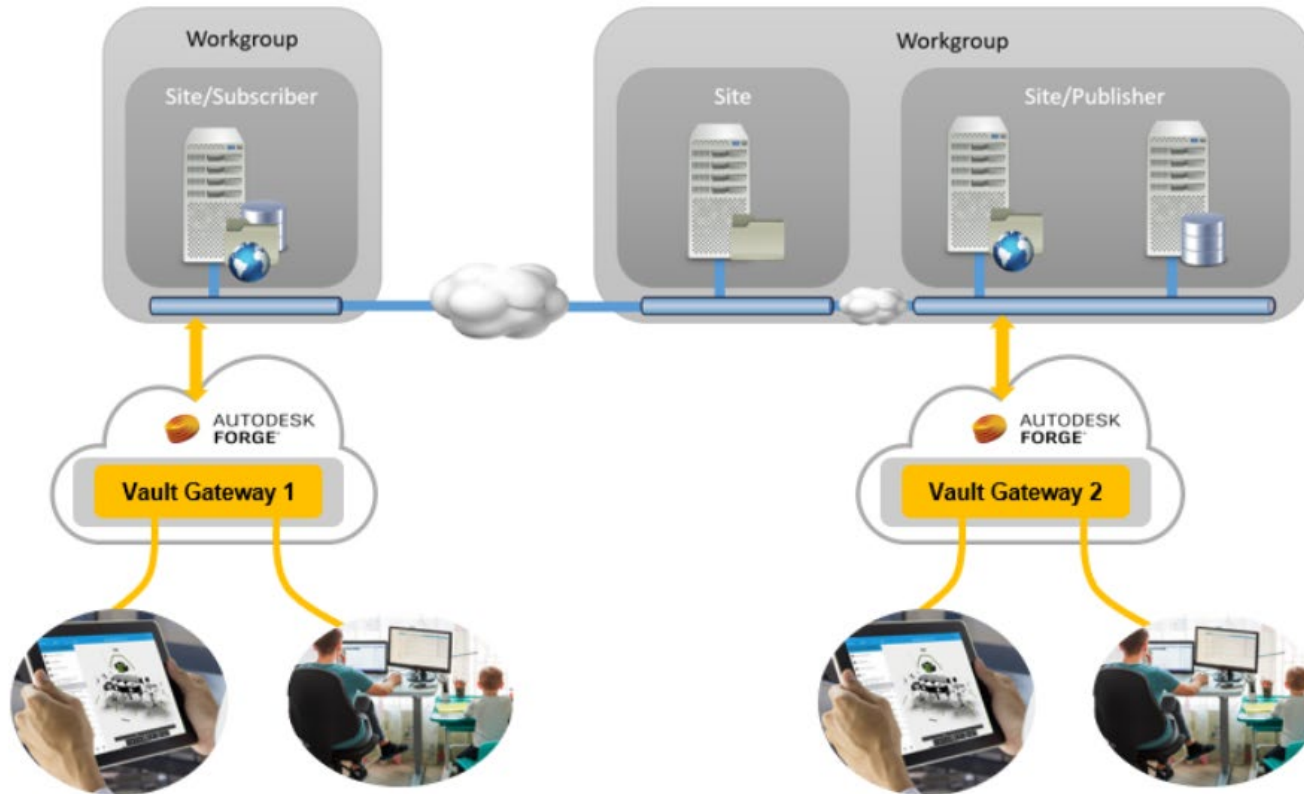
User Defined

Application Version	2020.3 (Build 243373000, 373)
Area Number	
Author	SCHNEIDER K.
Date File Created	12-10-2004
Description	Welding Station
Document SubType	{E60F81E1-49B3-11D0-93C3-7...
Document SubType Name	Assembly
Group Number	
Manufacturing Category	Layout
Part Number	00-000-000f
Rev Number Layout	
Title	Welding Robot for car parts

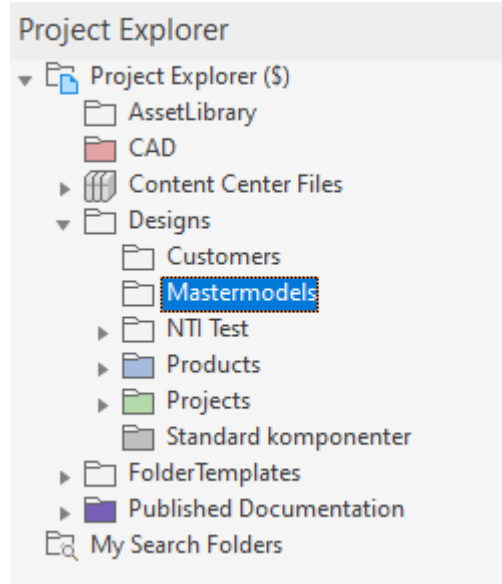


Vault Gateway

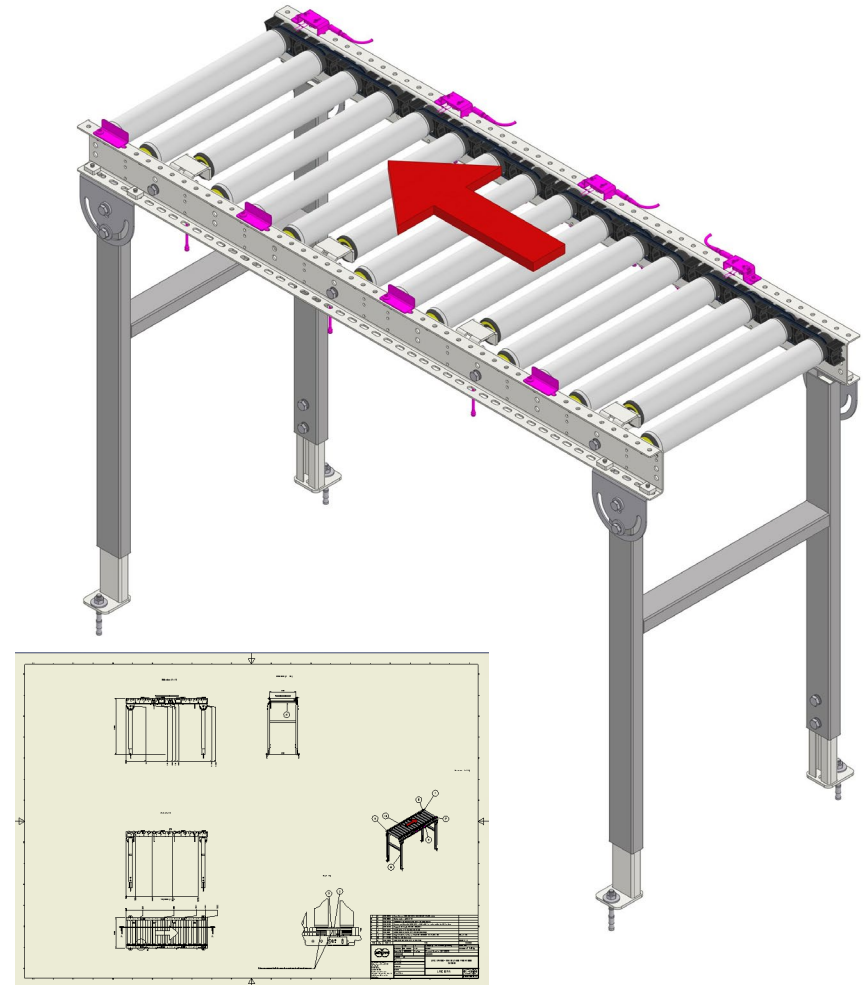
Connected Workgroups | Multiple-Gateways



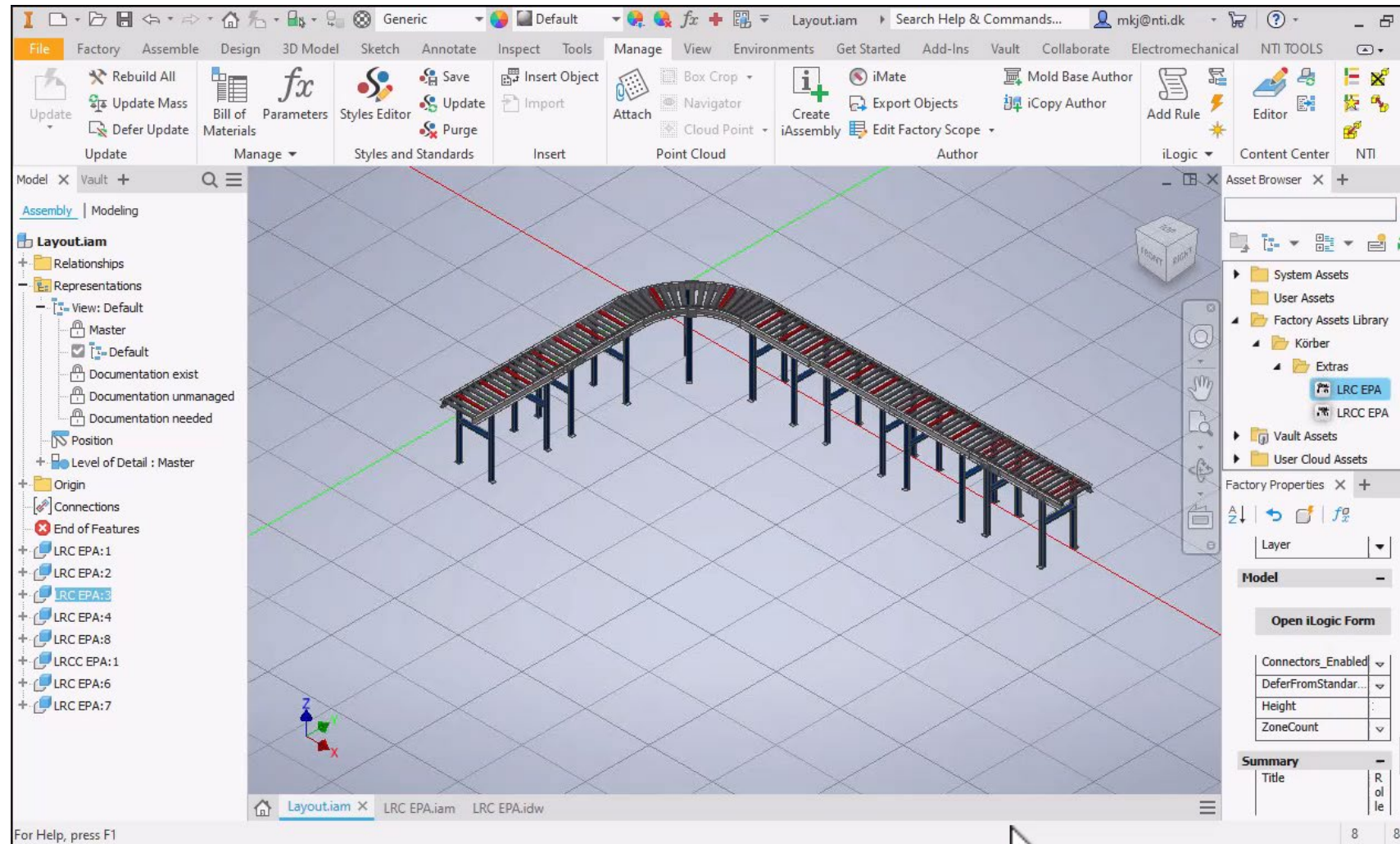
Mastermodeller

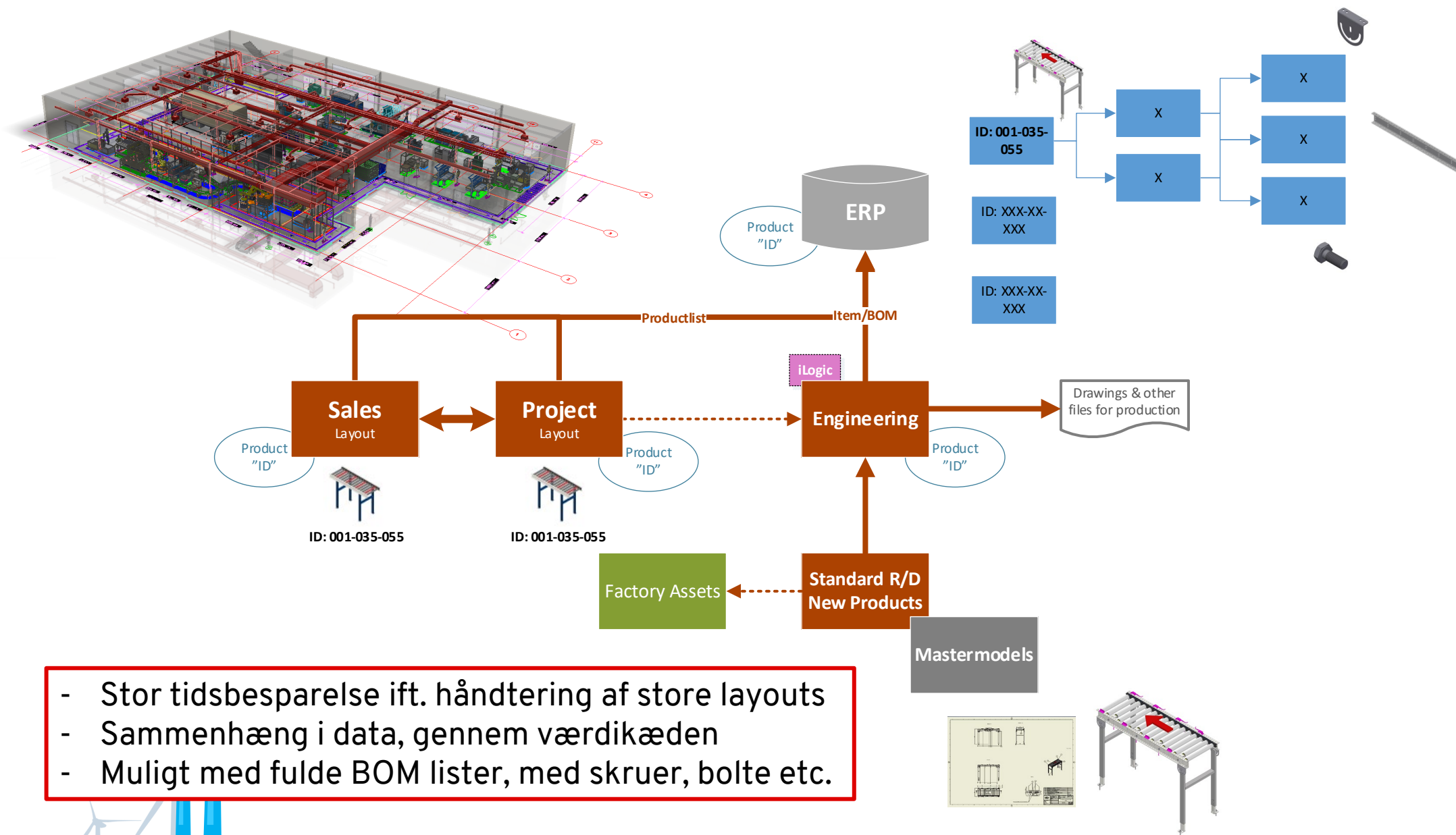


- Genbrug af opdaterede data
- Mulighed for automatisering



Automatisering med mastermodels

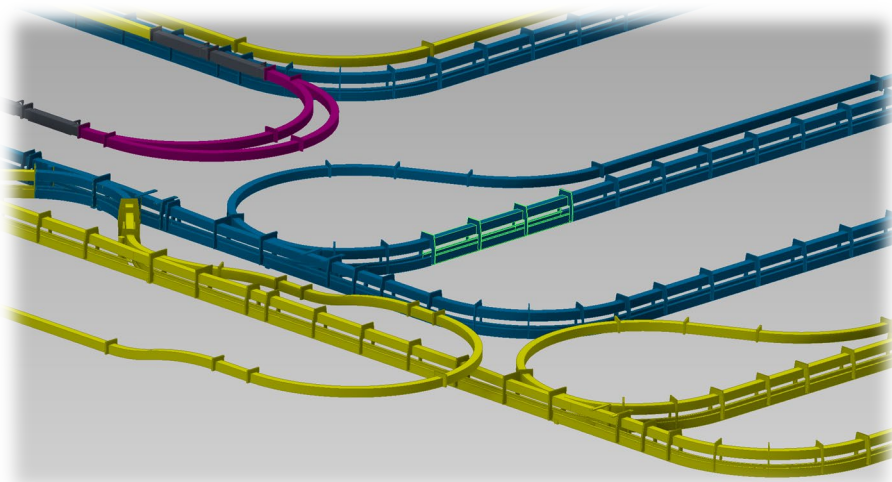




- Stor tidsbesparelse ift. håndtering af store layouts
- Sammenhæng i data, gennem værdikæden
- Muligt med fulde BOM lister, med skruer, bolte etc.

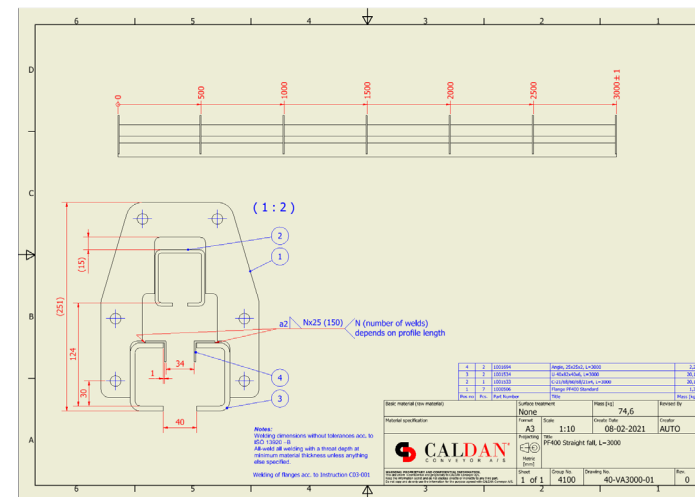
ID: 001-035-055

Automatisering med NTI Automation

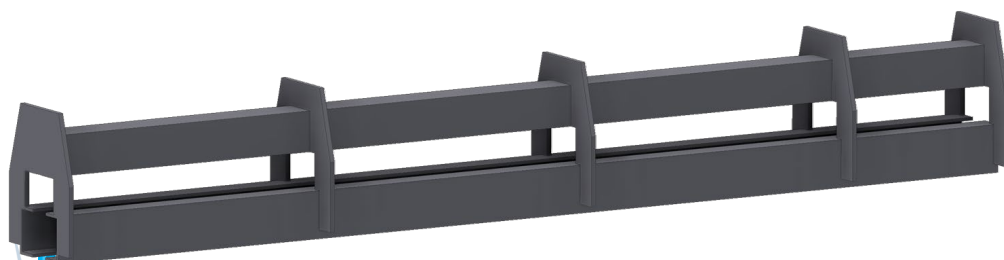


Layout med assets

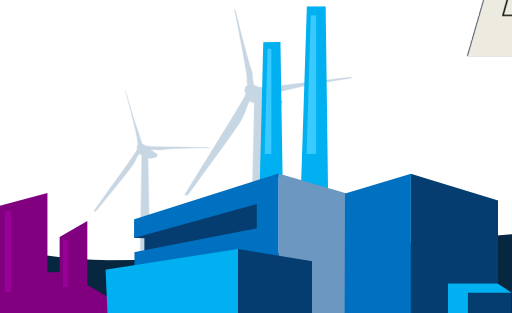
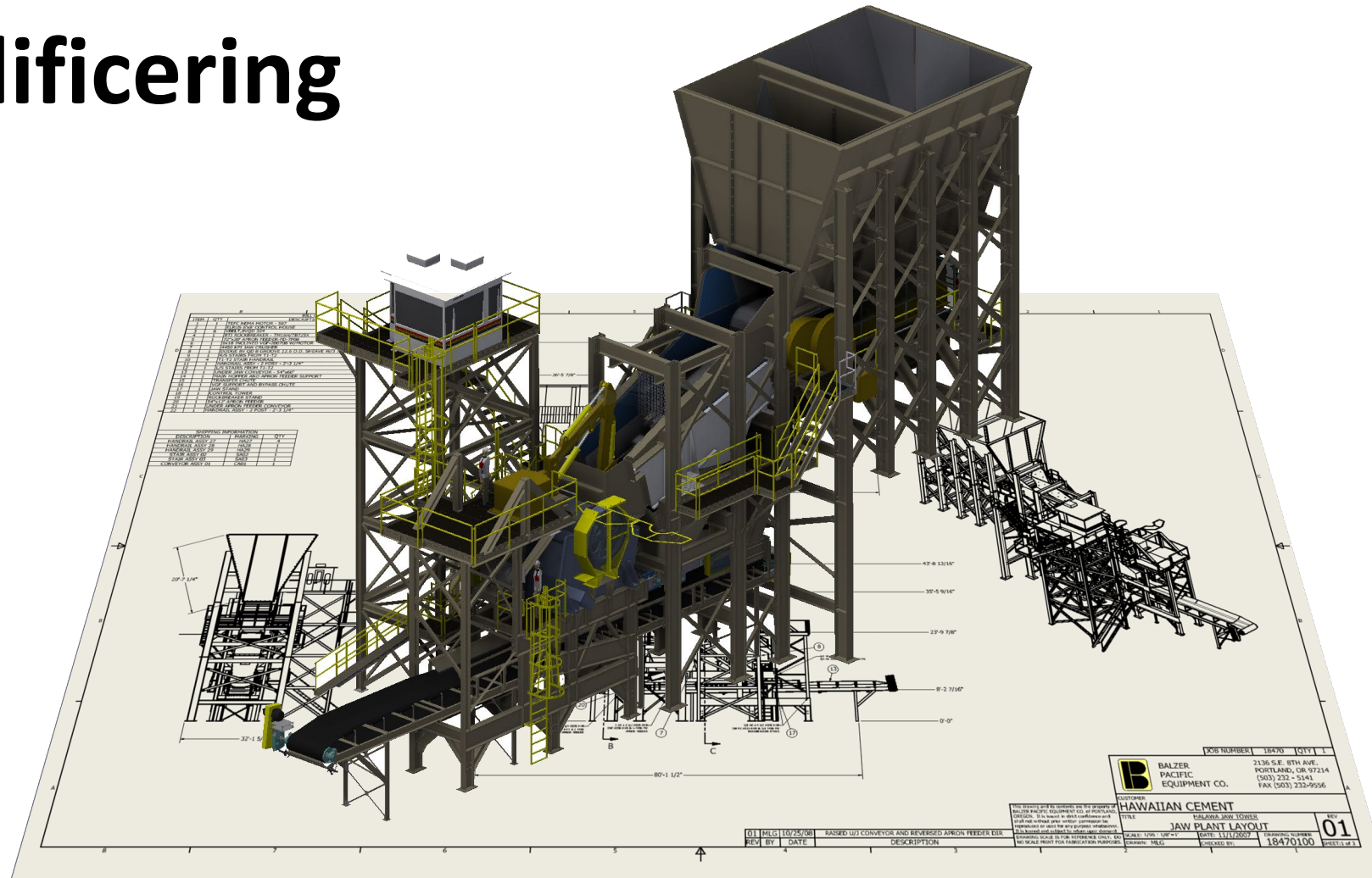
NTI TOOLS
Automation

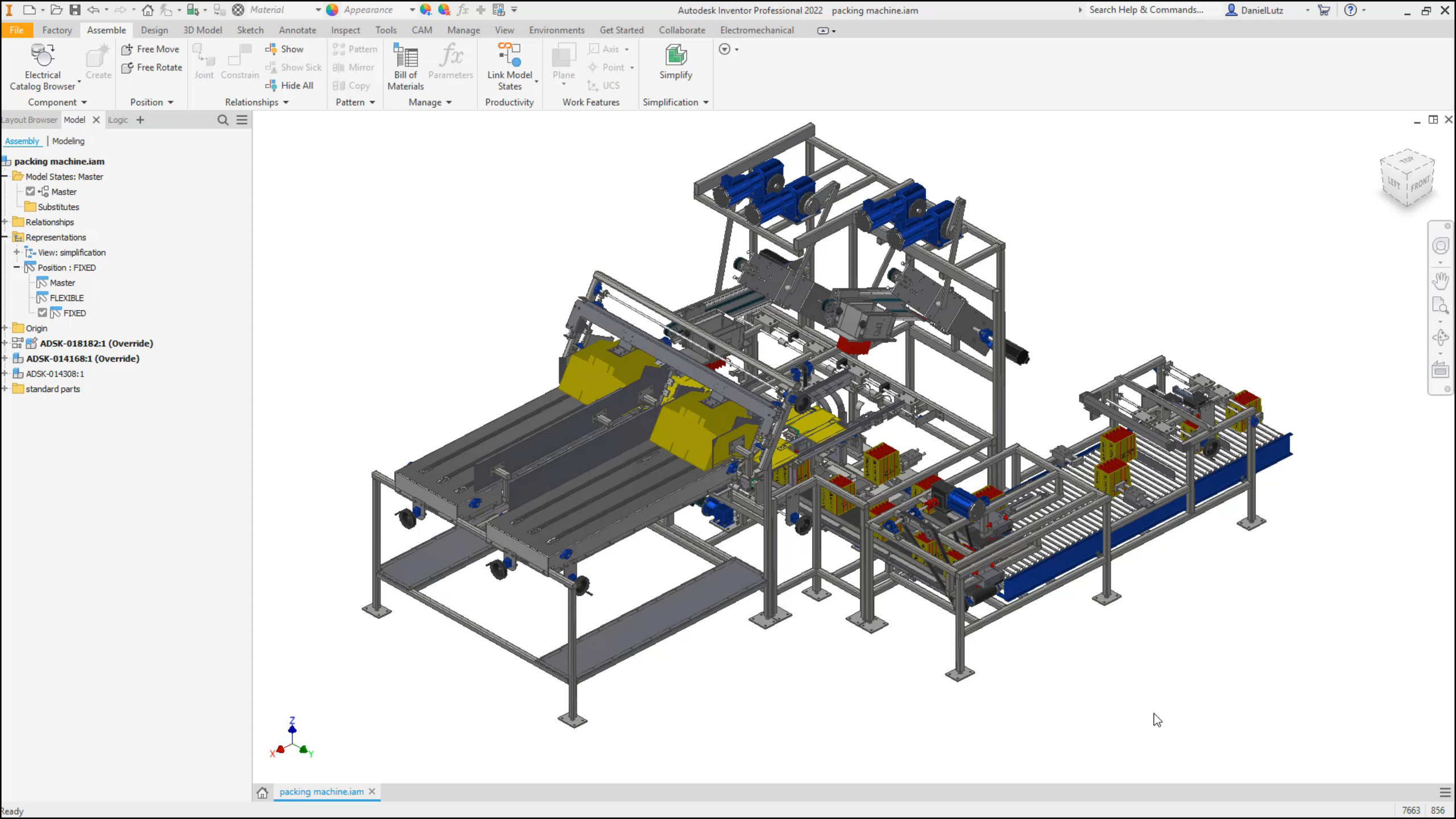


Fuldt produktionsgrundlag,
BOM, PDF, DXF, STP, ...

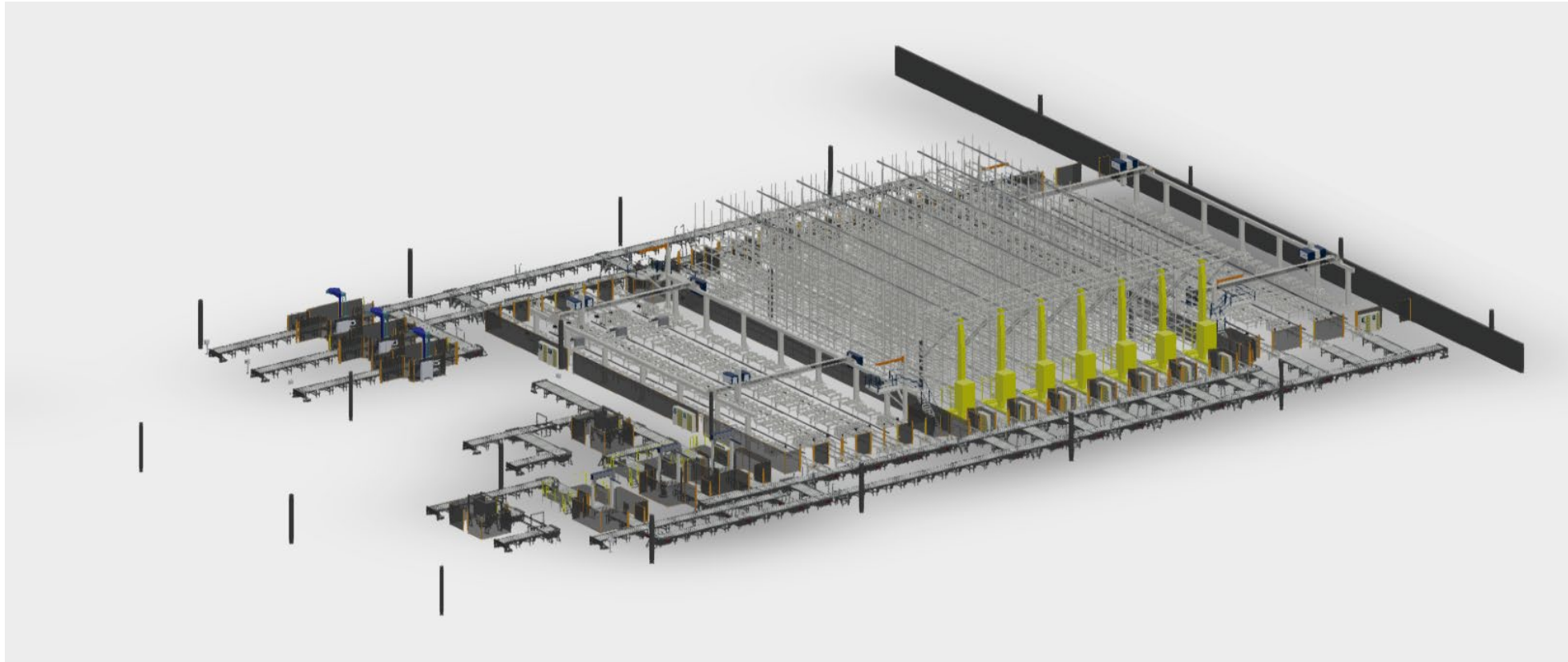


Simplificering





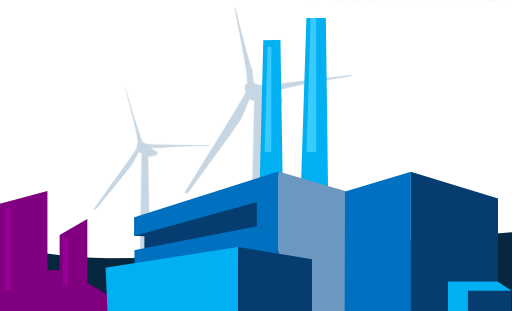
Inventor Factory layout, med simplificerede modeller



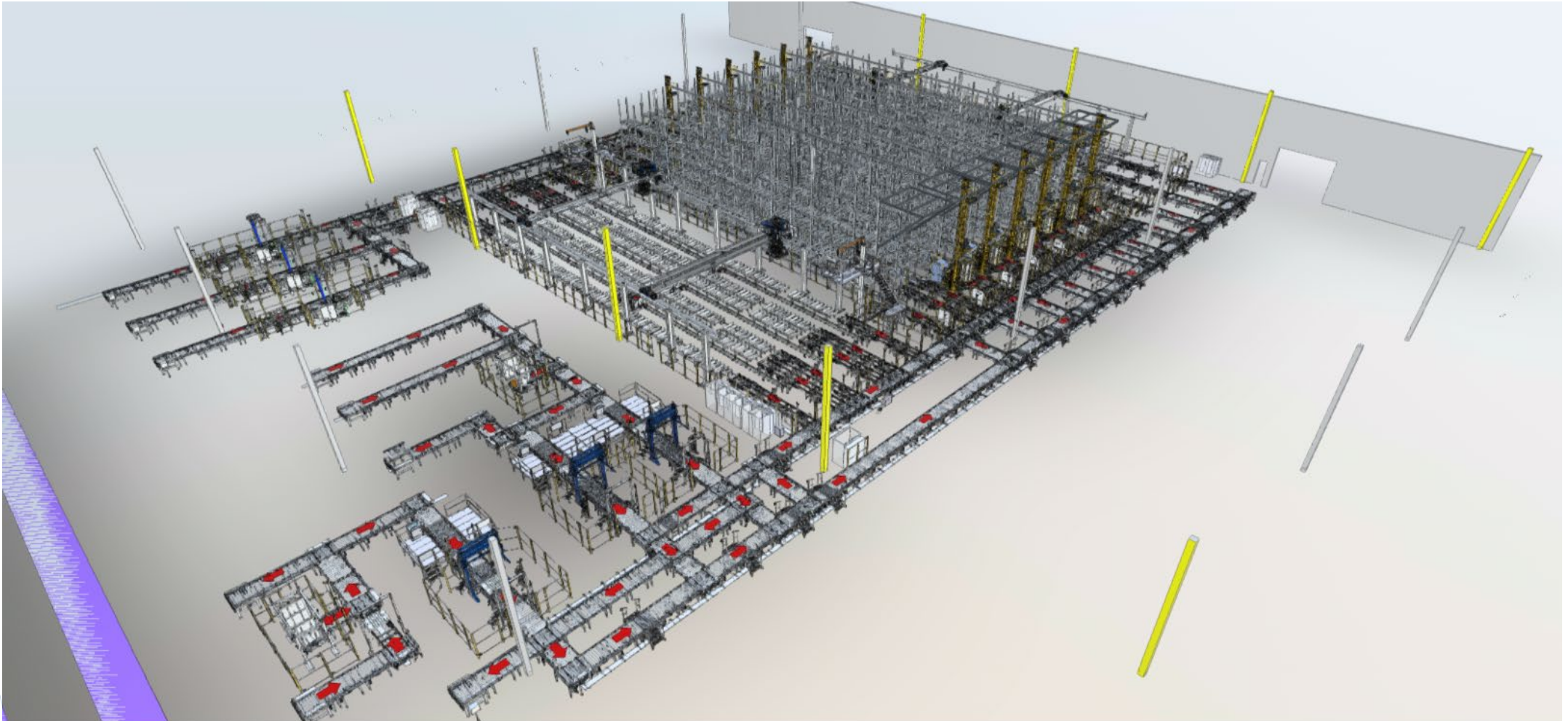
AUTODESK Viewer

AUTODESK

Åbnes på under 1 minut



Inventor layout, med fuldt detaljerede modeller

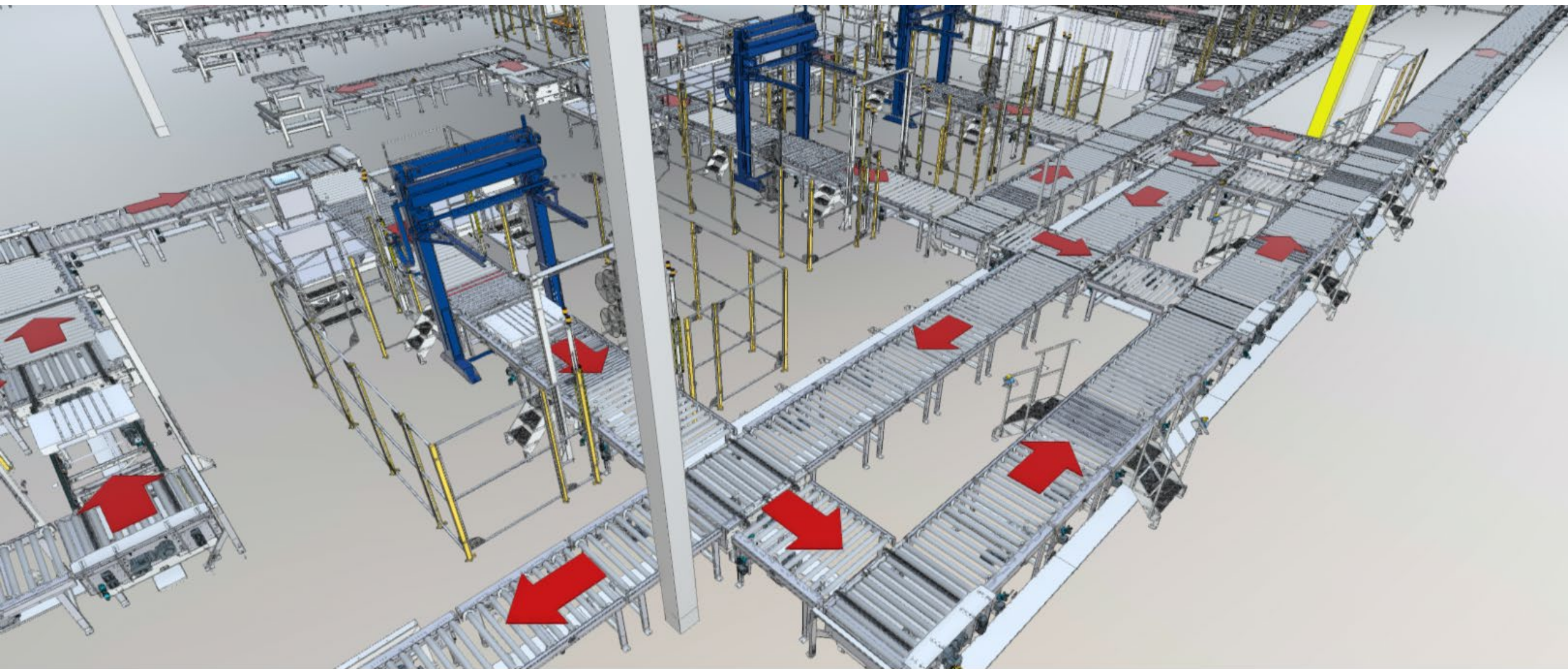


AUTODESK Viewer

Kan ikke længere åbnes i Inventor

AUTODESK





 **AUTODESK** Viewer

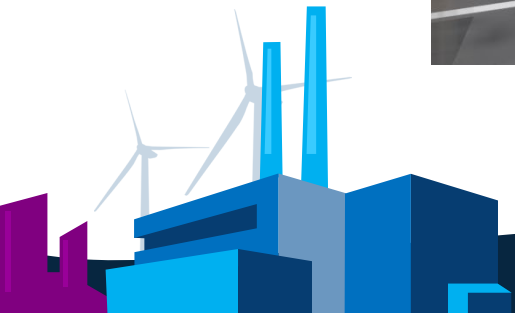
 **AUTODESK**



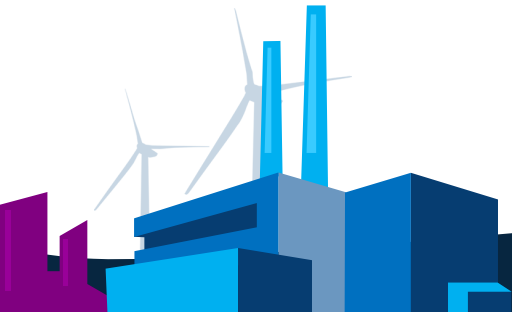
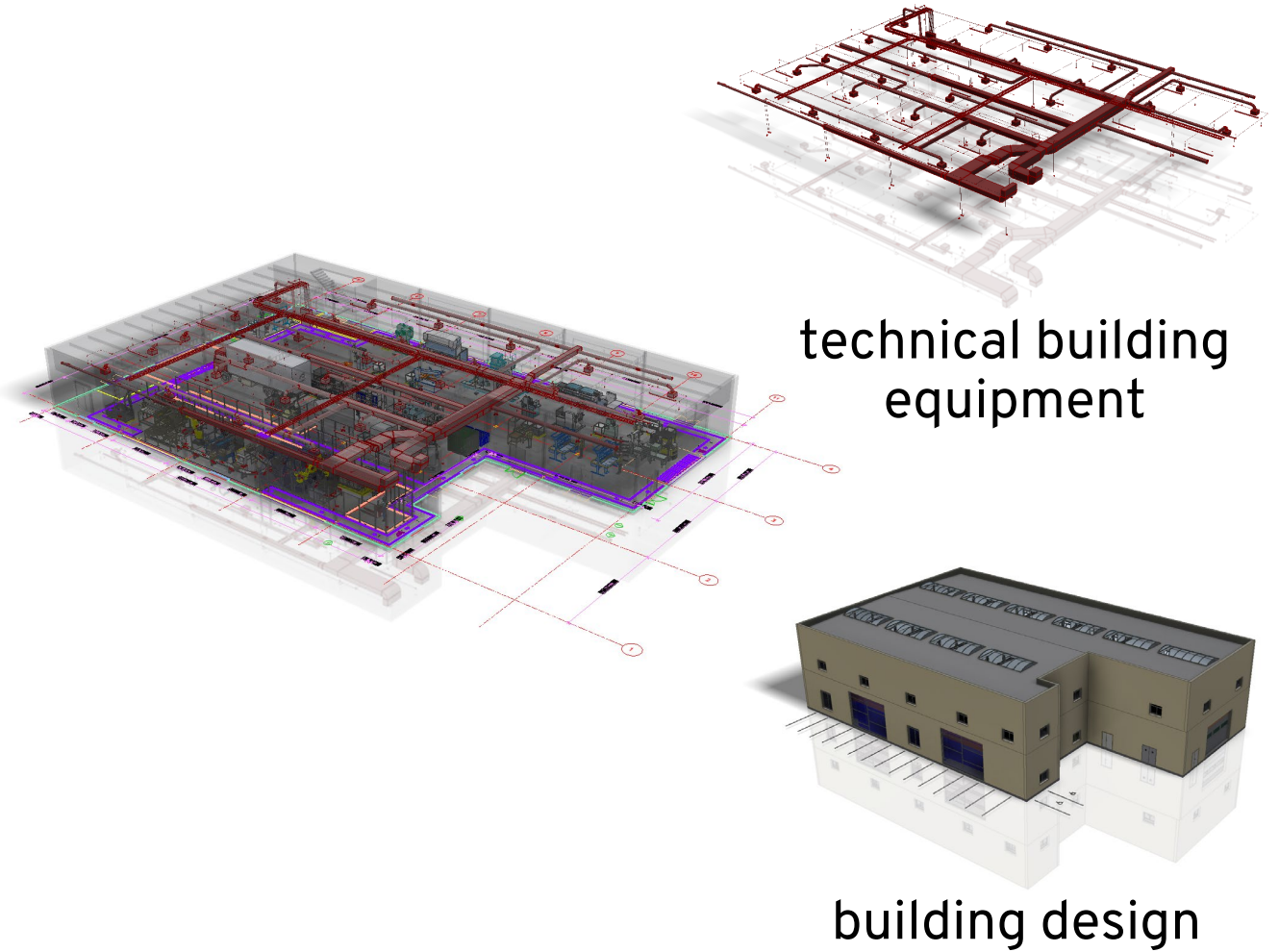
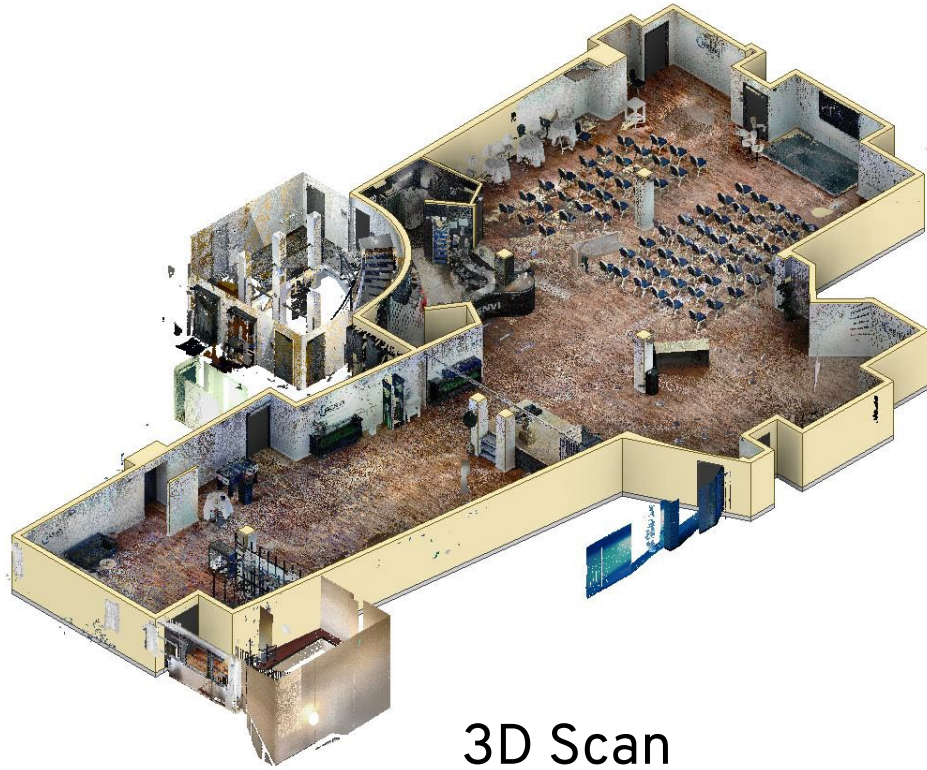
Top 3 tip, til succes med layout



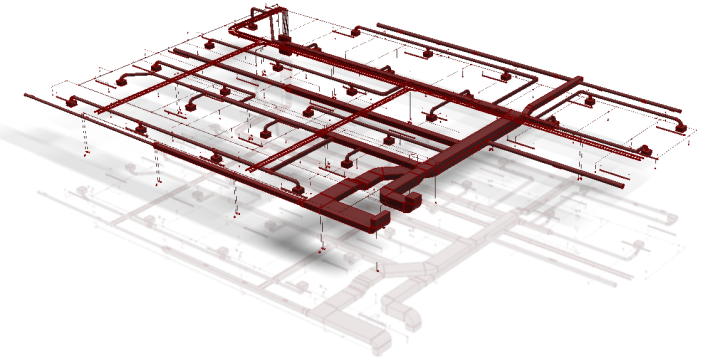
- Standardisering
 - Oprydning i produktprogrammer
 - Oprettelse af fuldt dokumenterede mastermodeller
 - Centralt bibliotek til mastermodeller
- Simplificering
 - Brug af simplificerede modeller
 - Opdateret Asset for hver mastermodel
- Data i centrum, delt på tværs af organisationen
 - Processer til deling af data



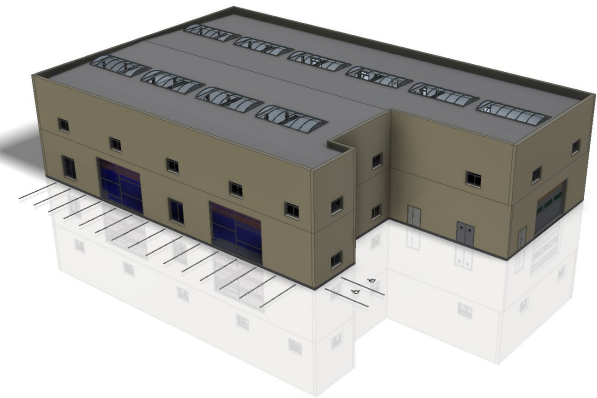
Hybrid layouts



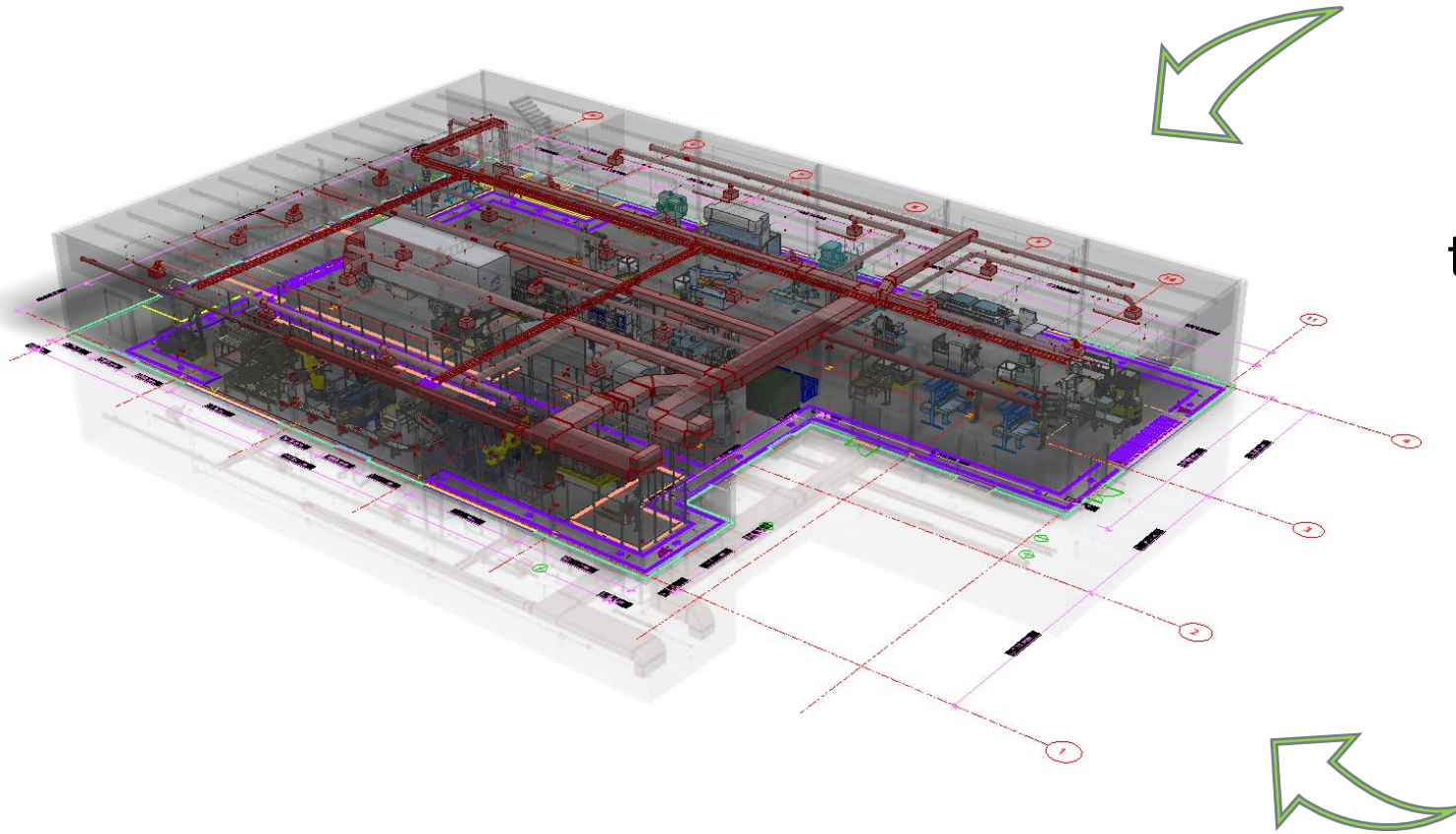
Integrated data exchange

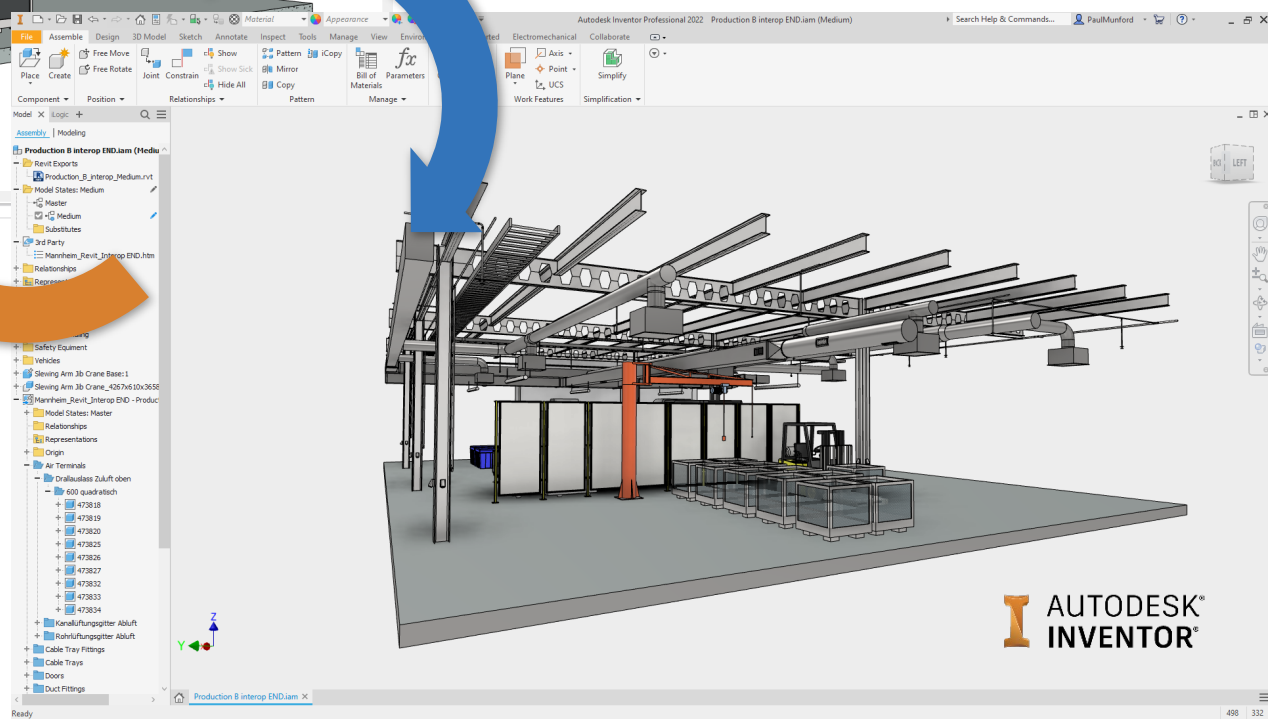
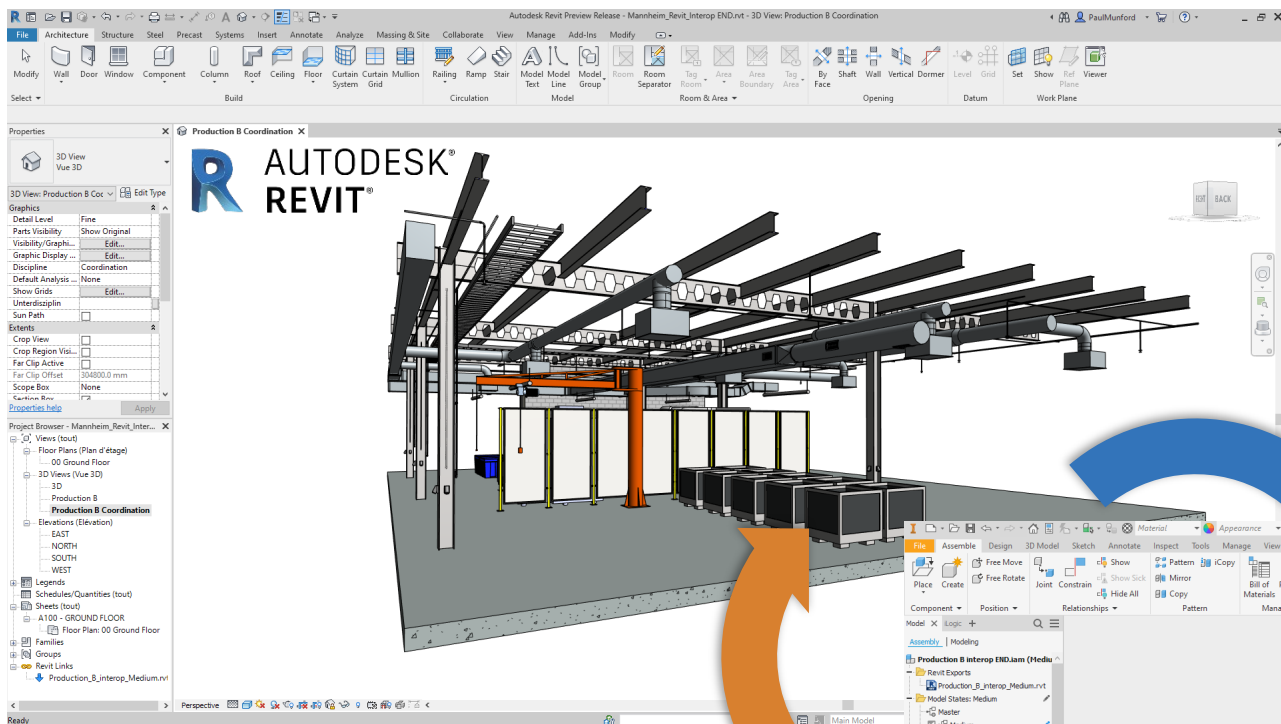


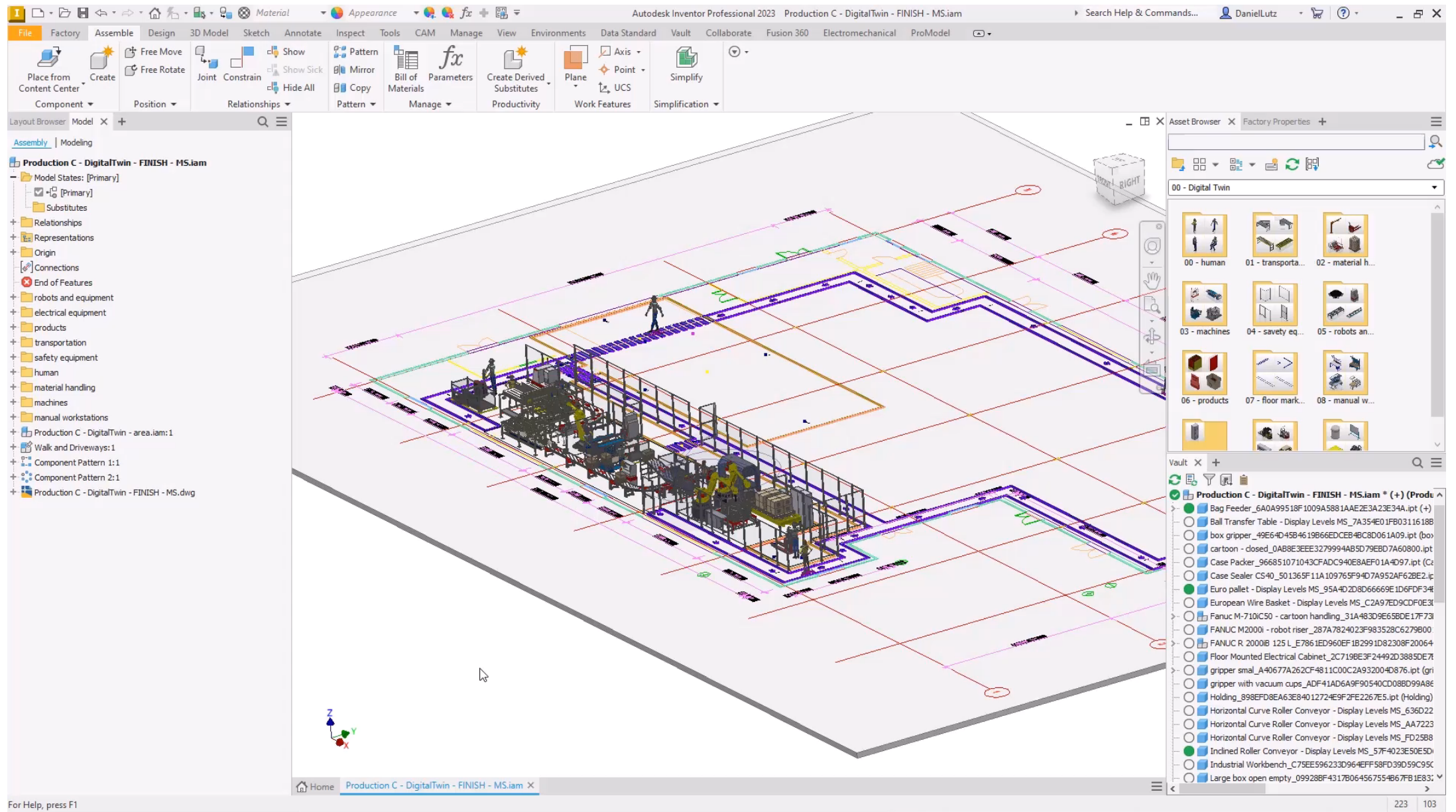
technical building equipment



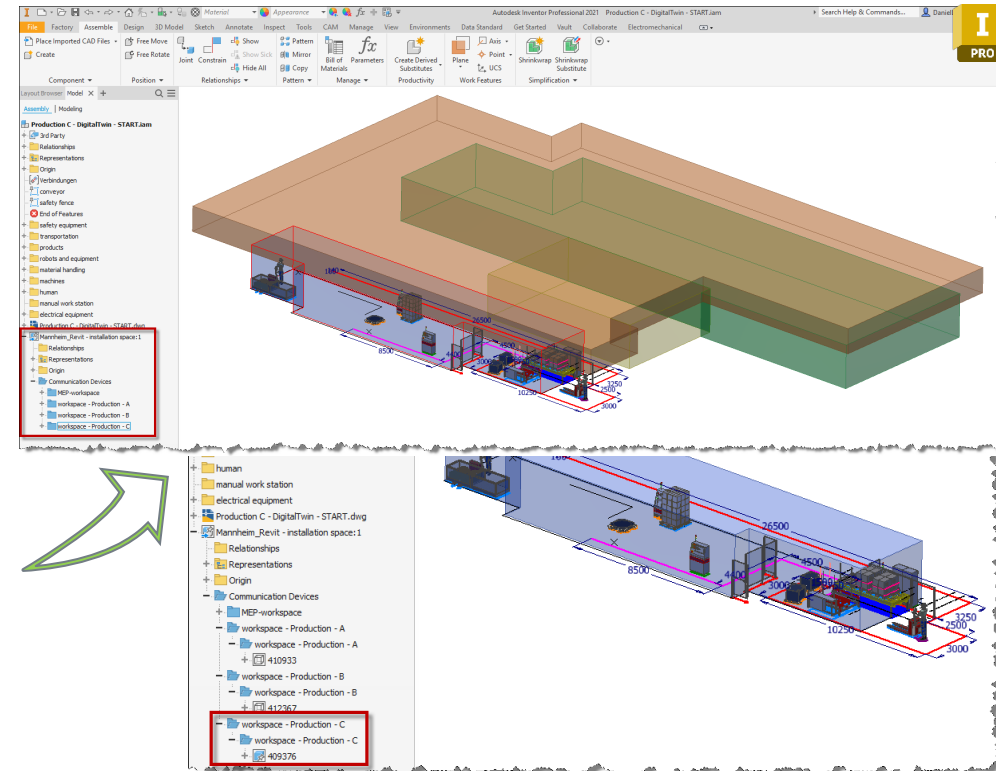
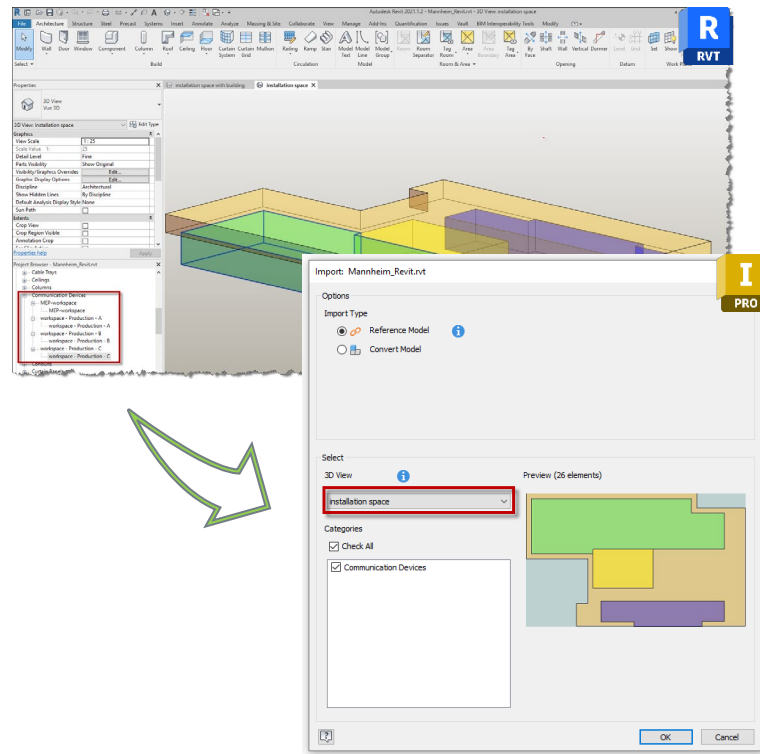
building design





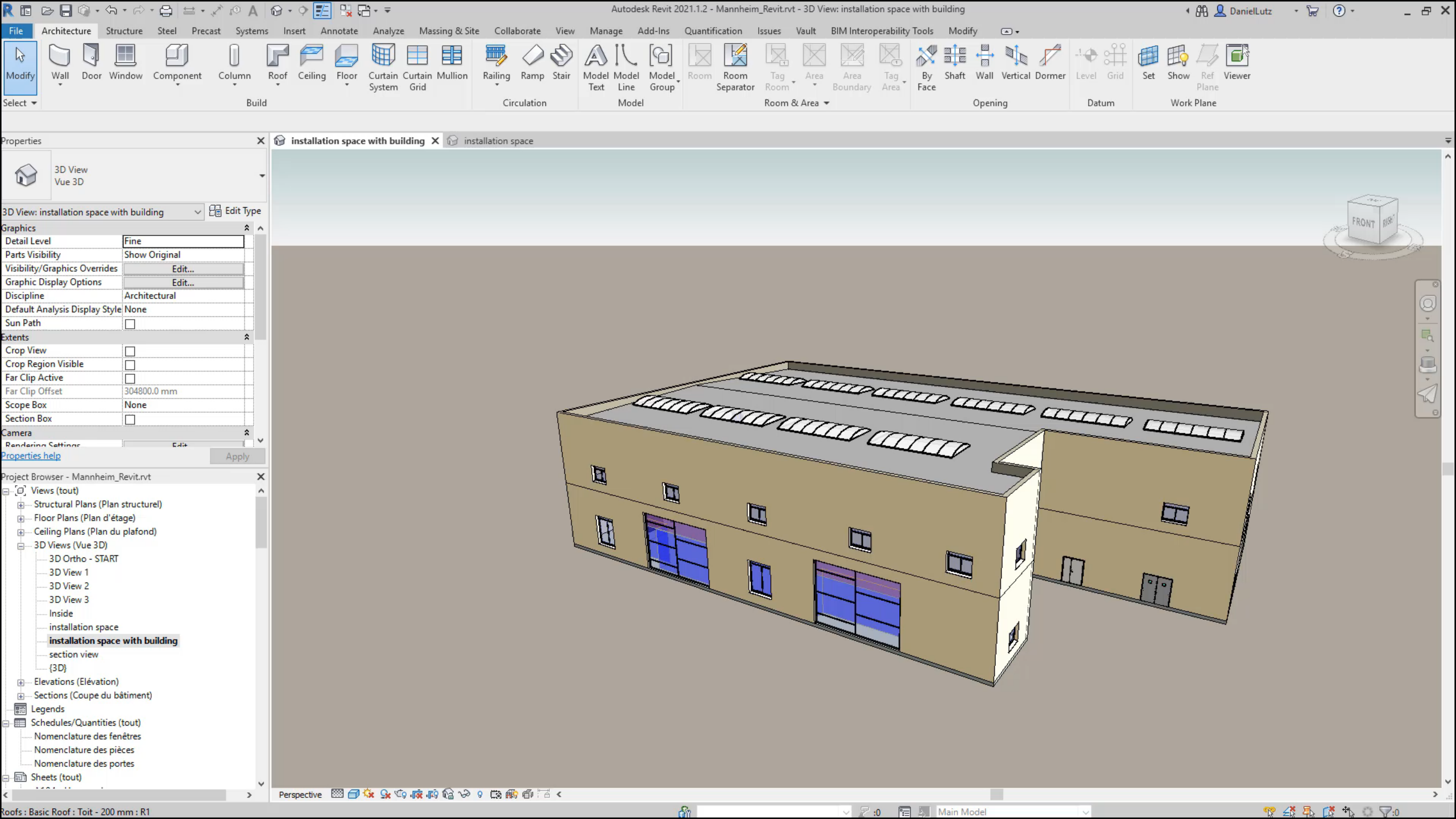


building-integration - workspace



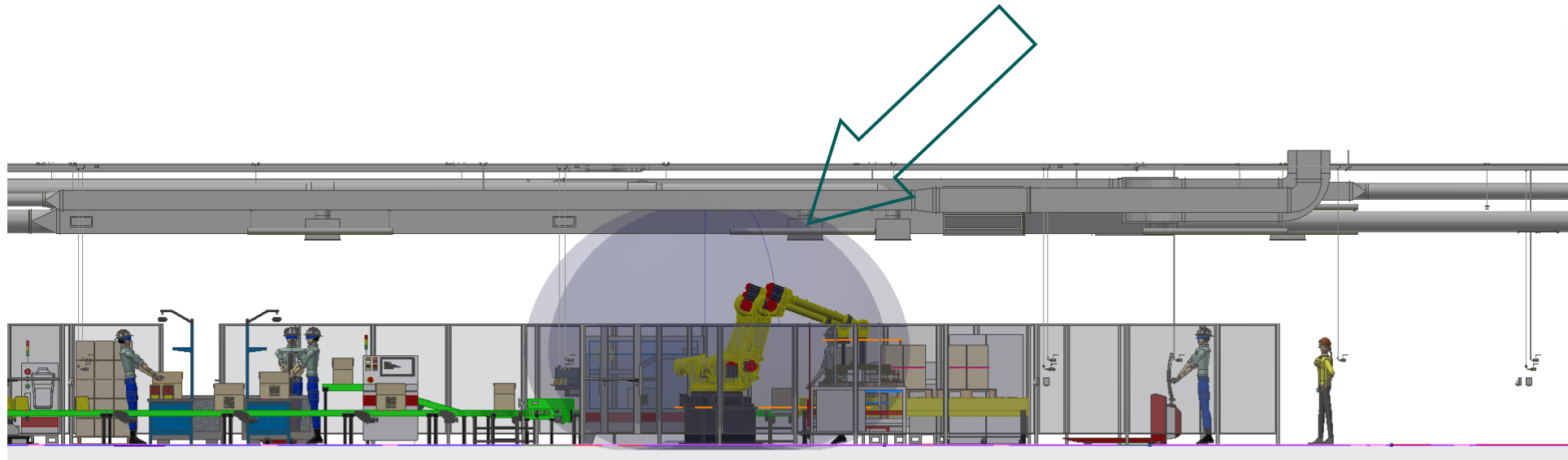
Use of construction spaces from Revit in Inventor



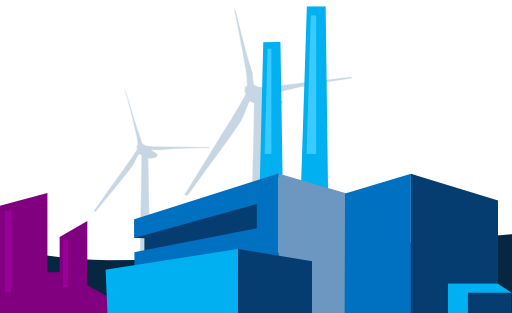


building-integration - collision check

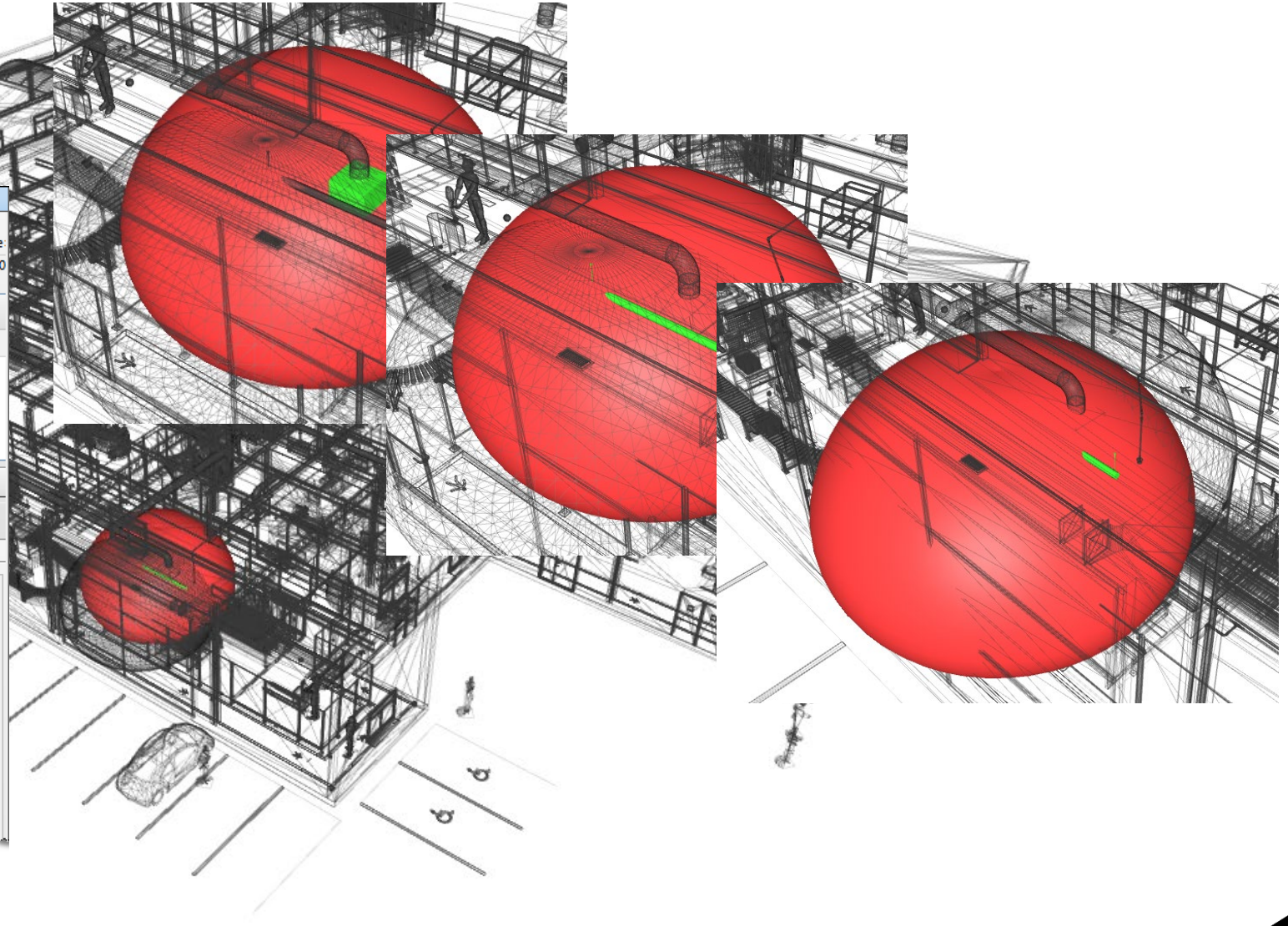
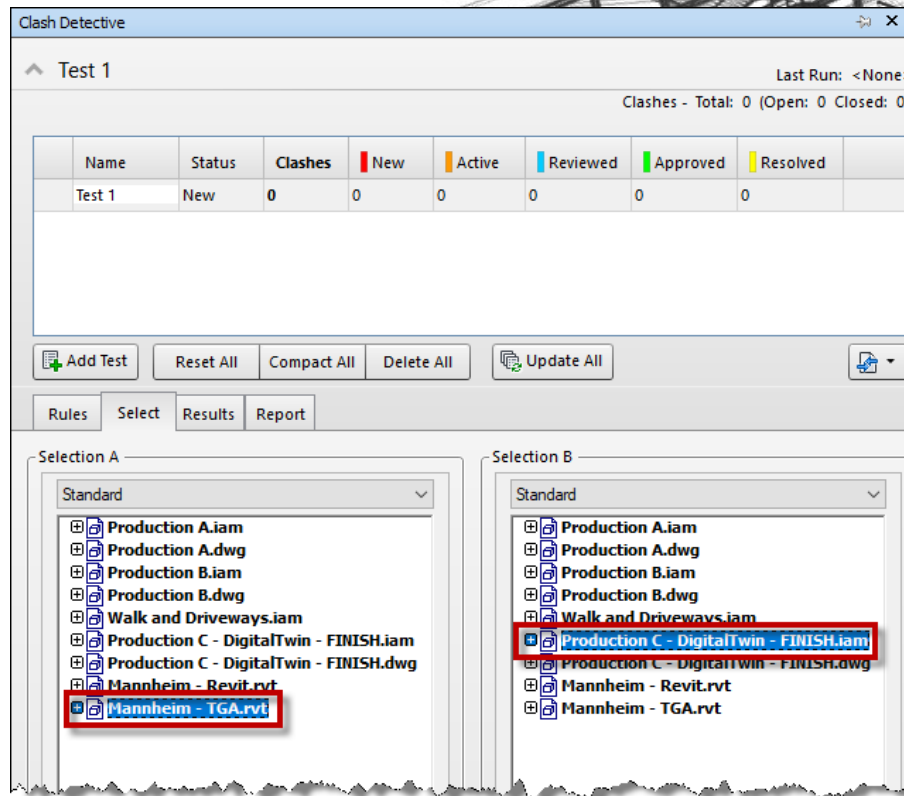
- x



By integrating the Revit construction spaces, collisions with other trades can be detected at an early stage.

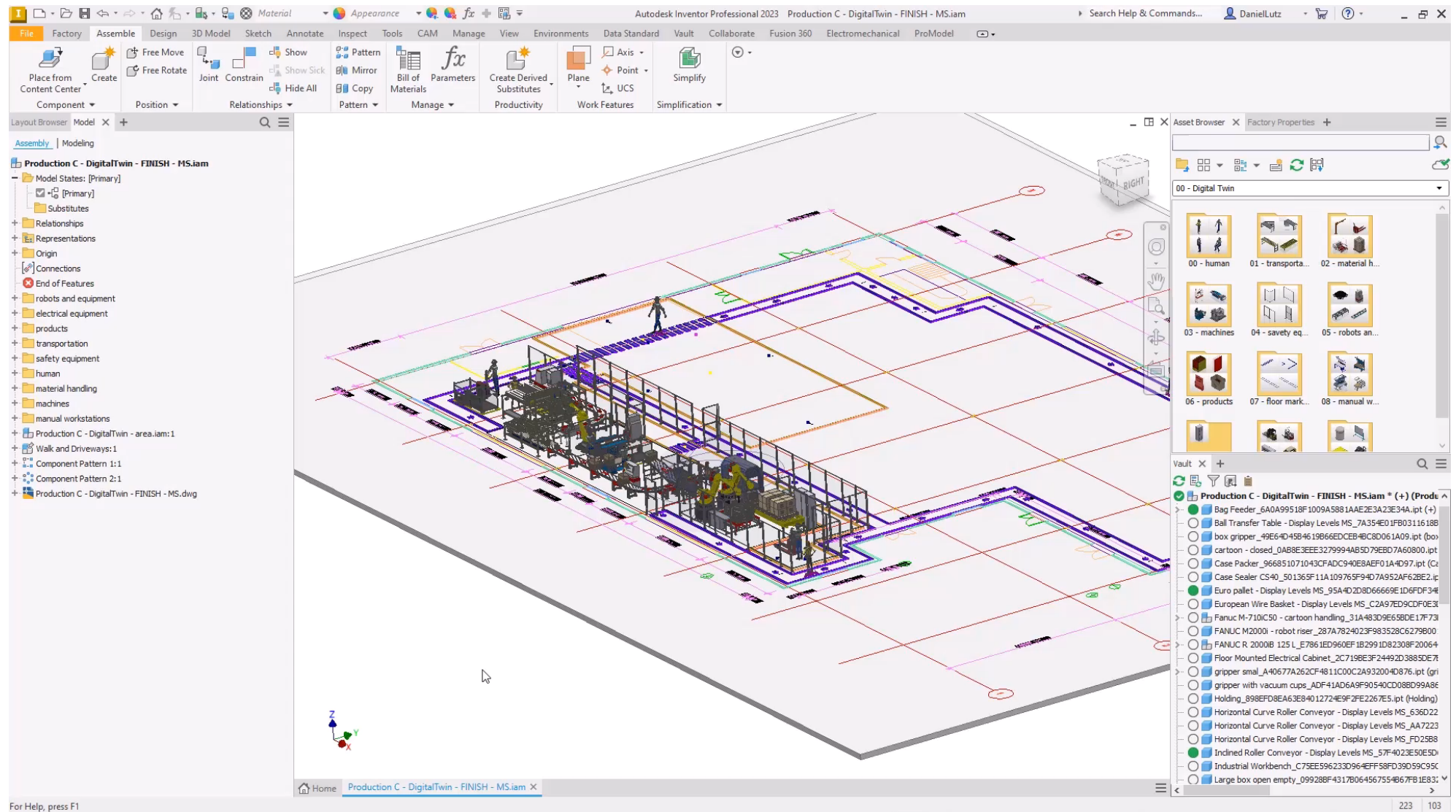


Building-integration - collision check

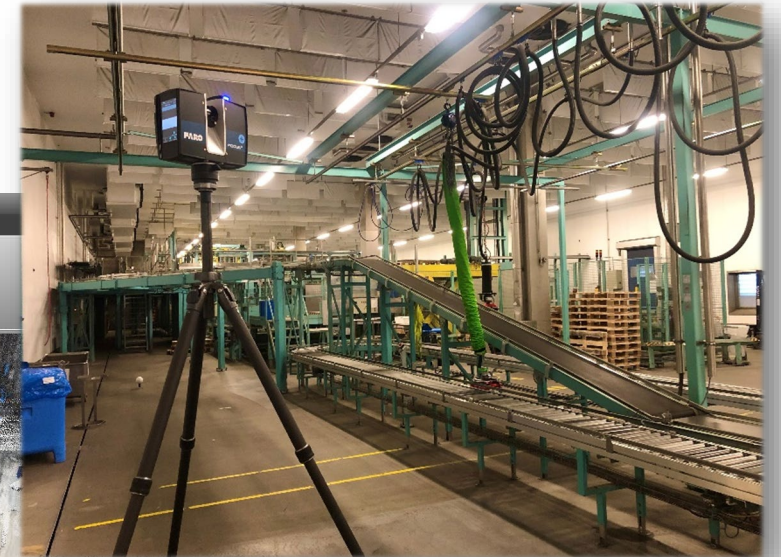
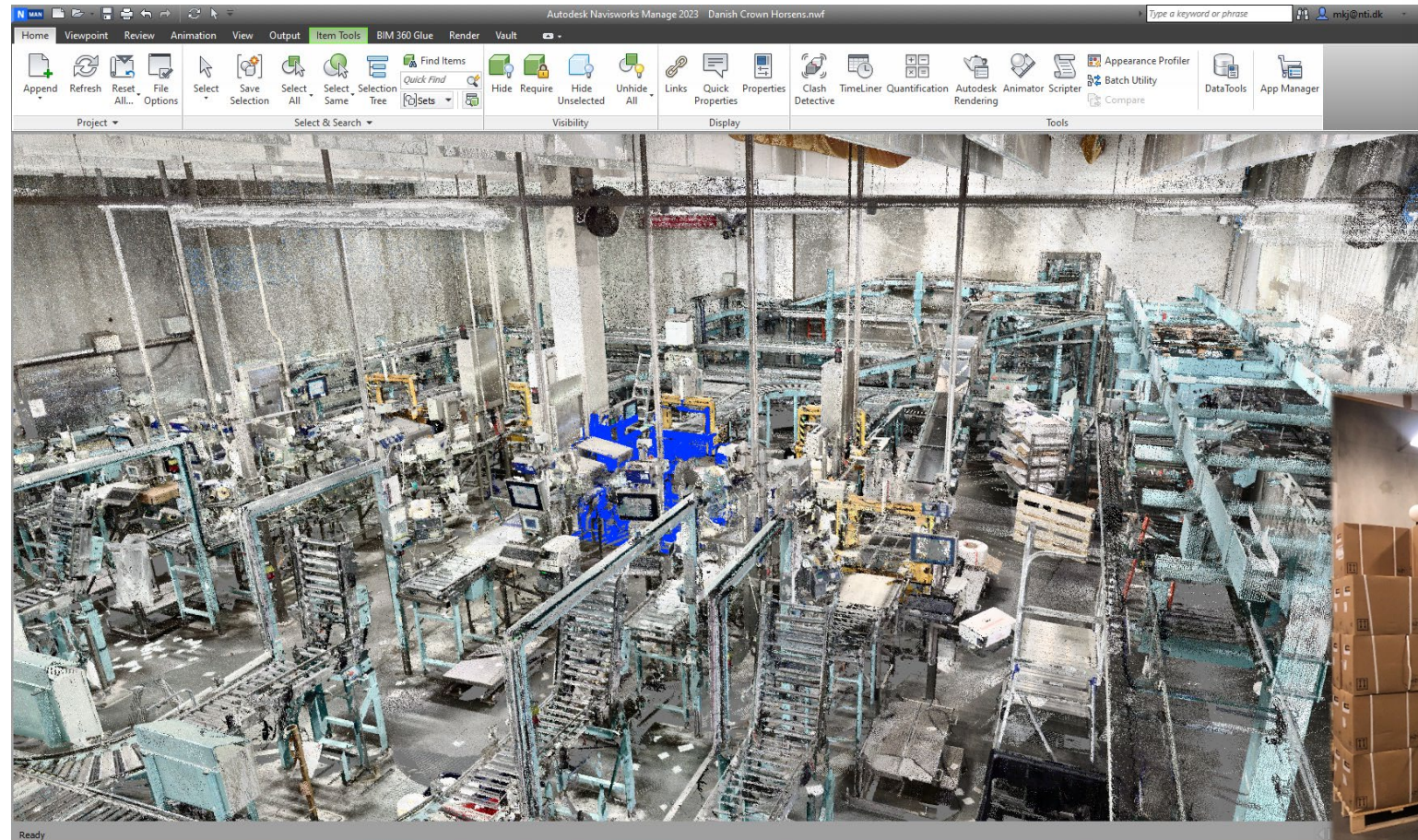


Autodesk Construction Cloud - Integration

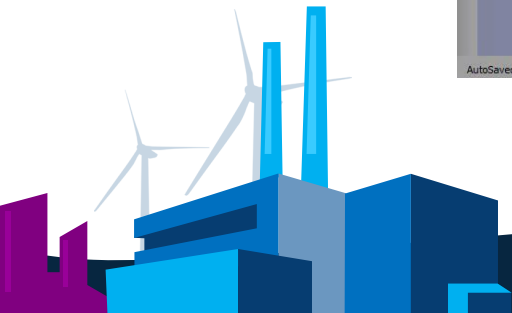
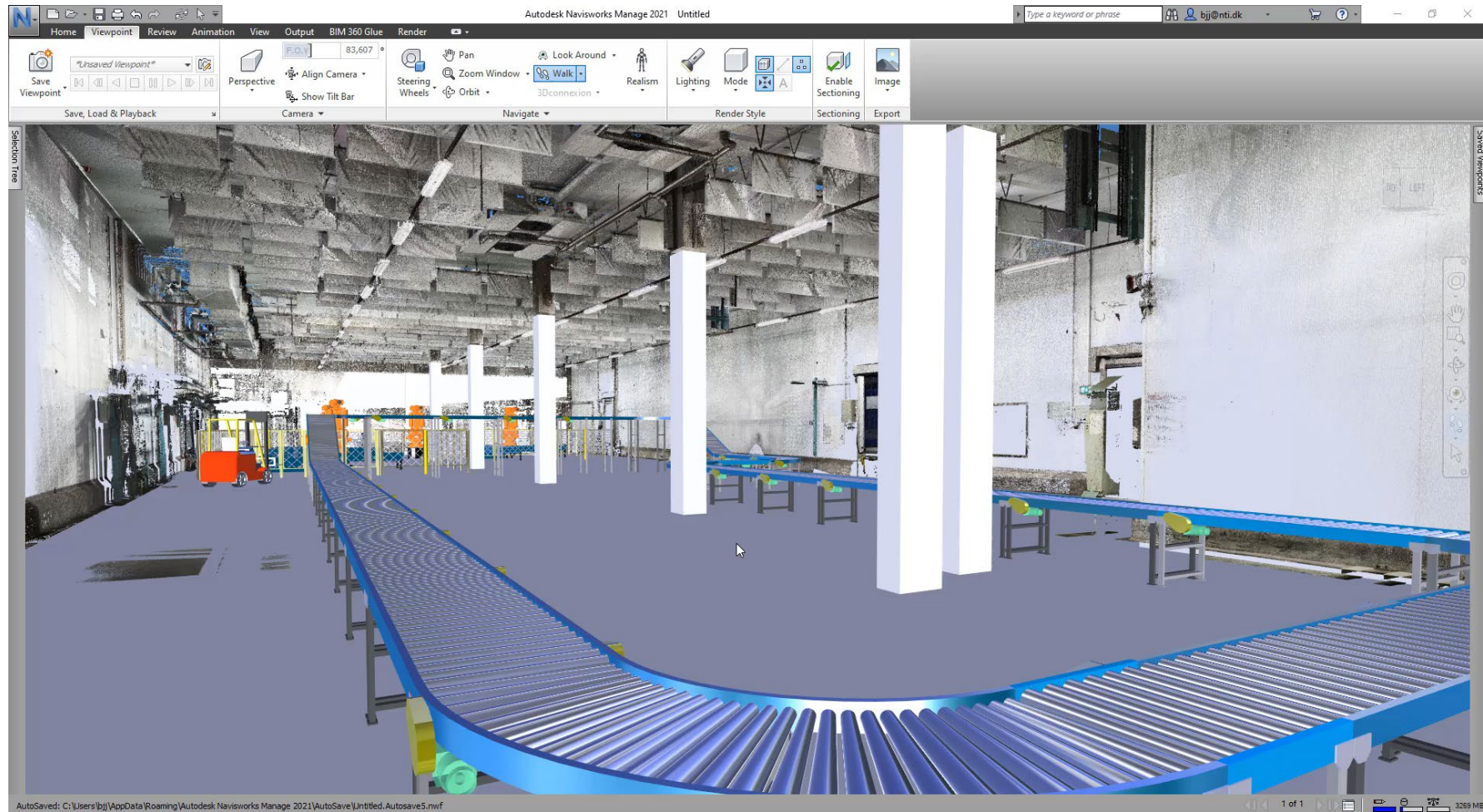


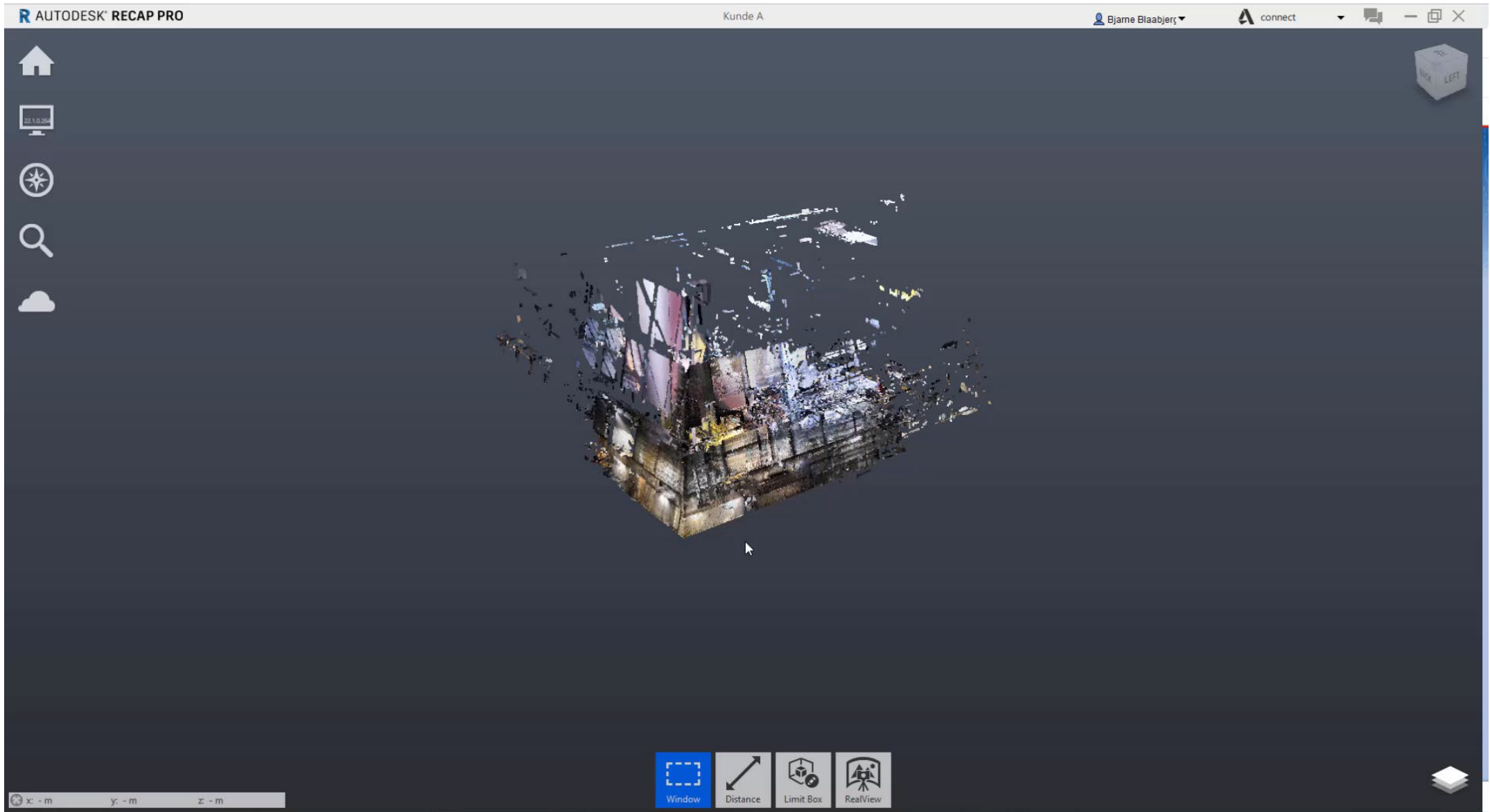


3D Scan



3D Scan





NavisWorks Clouddrender

I NavisWorks, kan
visualisering
laves, uden
opsætning af lys
eller materialer

