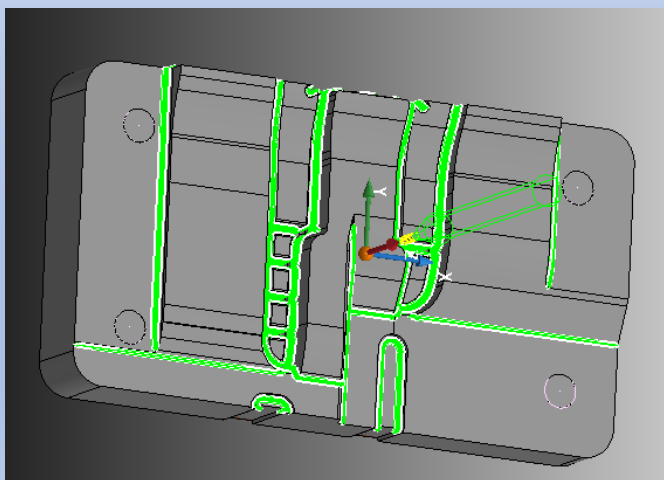


# CC Plast A/S

## NTI, Industri og Design Forum



Kort præsentation  
Kunde case  
PowerMill

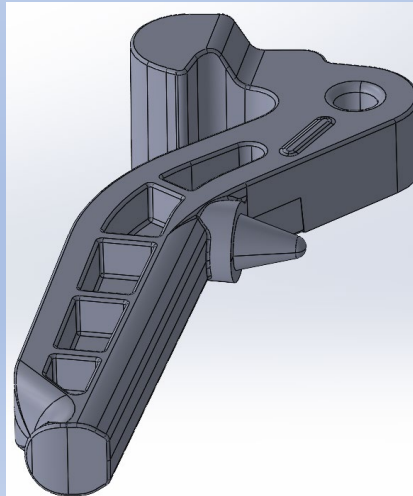
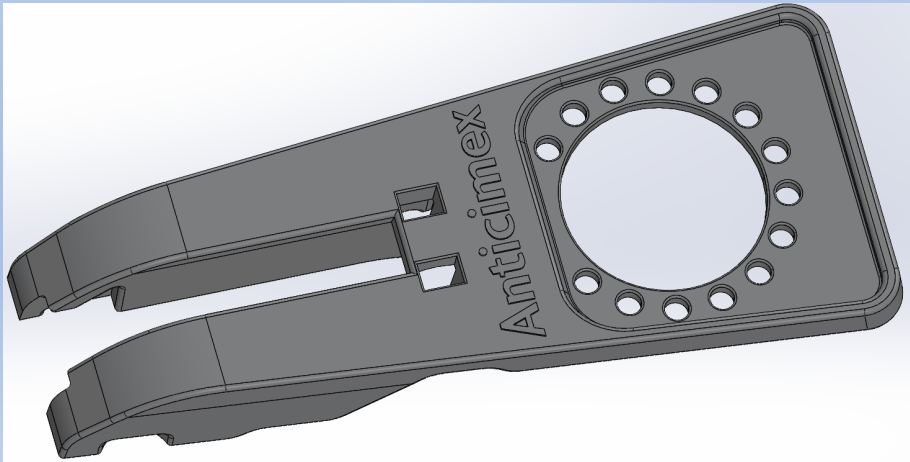
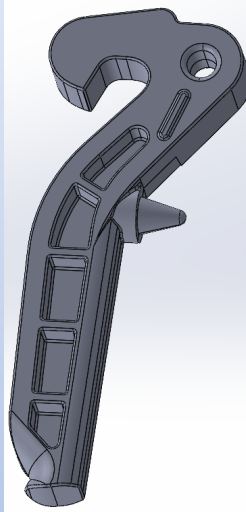
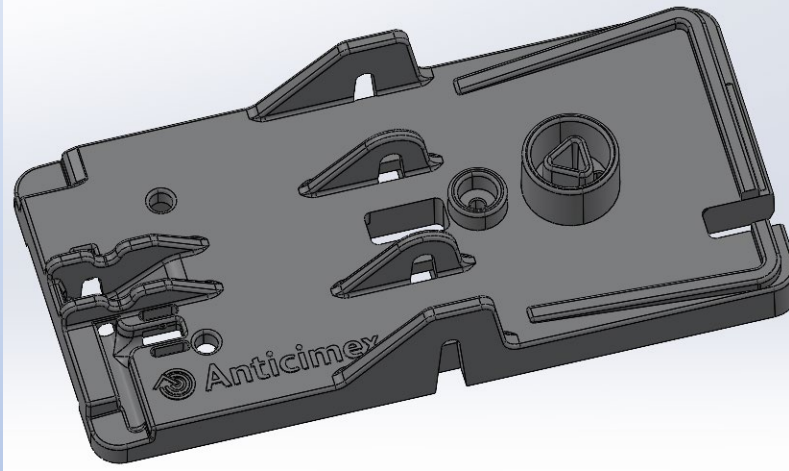




- CC Plast A/S
- Beliggende i Hillerød
- Leverandør af totale plastløsninger
  - Produktion, sprøjtestøbning
- Værksted, prototype-, pilot- og produktionsværktøjer
  - Test center, sprøjtestøbning

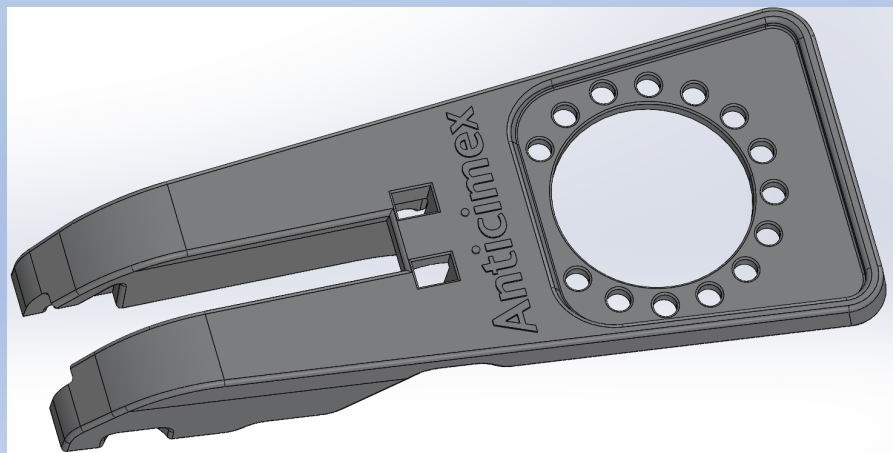
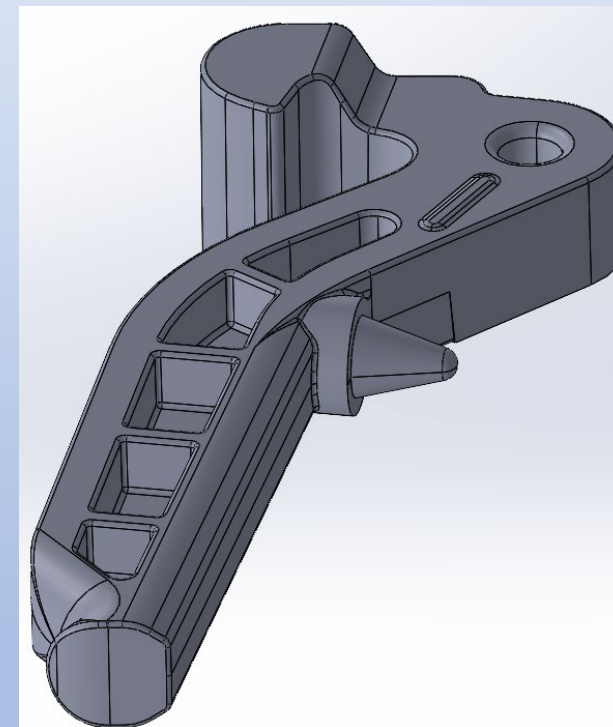
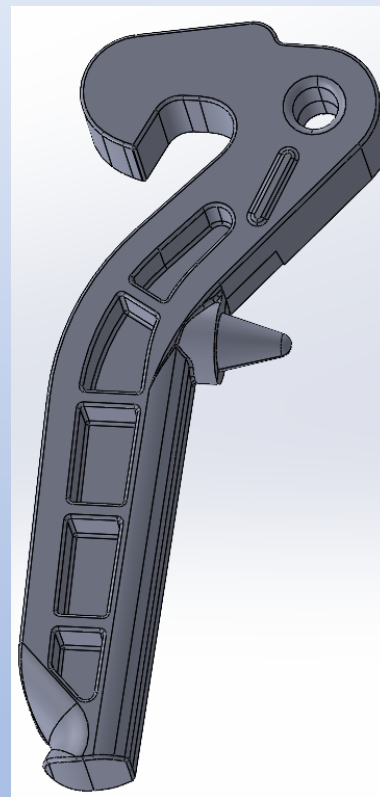
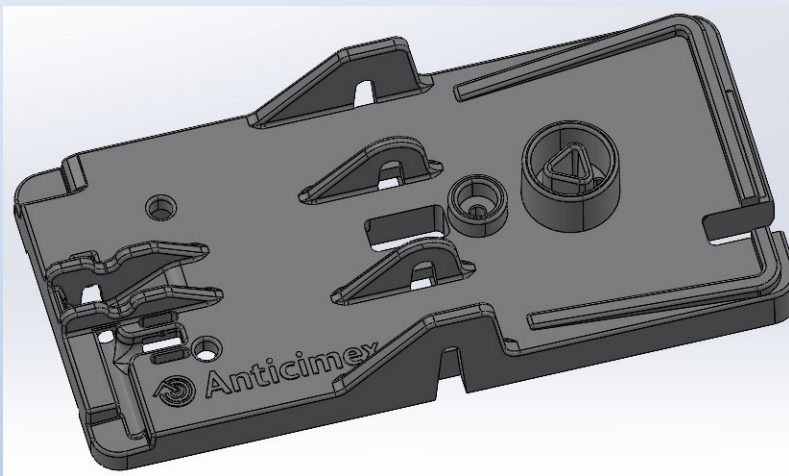


Case: Fra udleverede 3D filer til 3 x 10.000 emner på 20 uger i aluminiums prototype værktøjer. Uge 24 – uge 44.

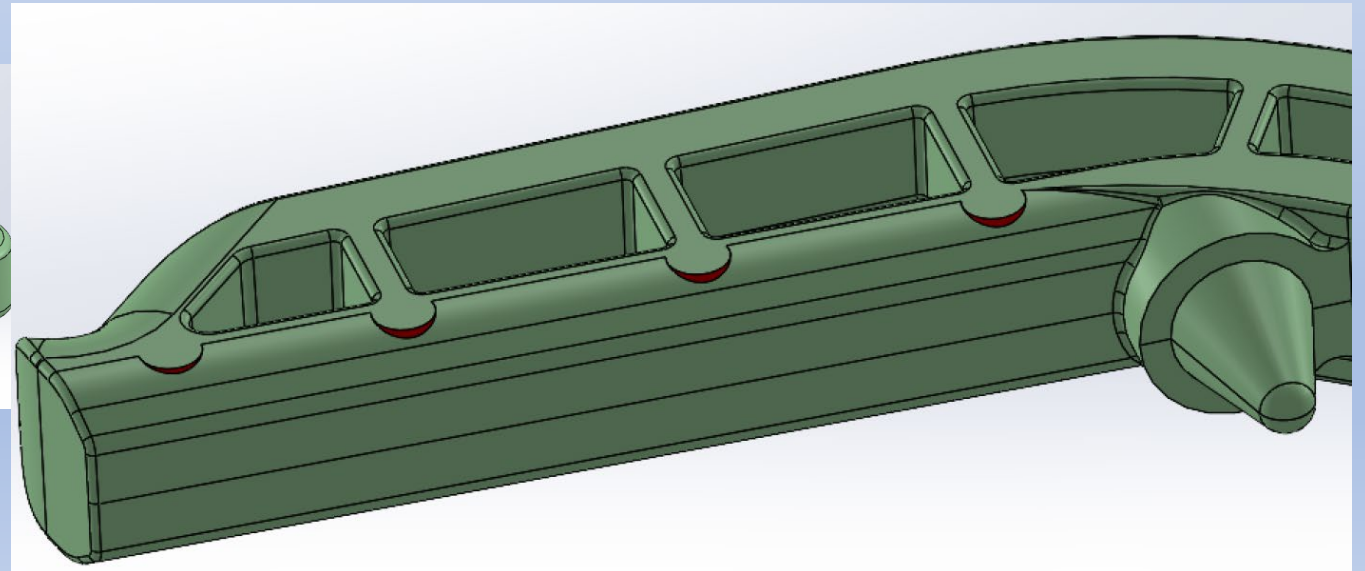
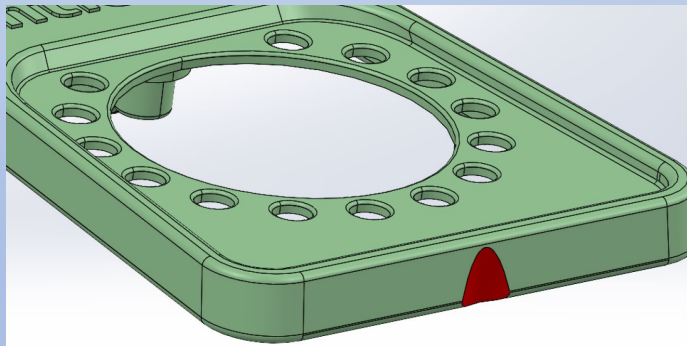
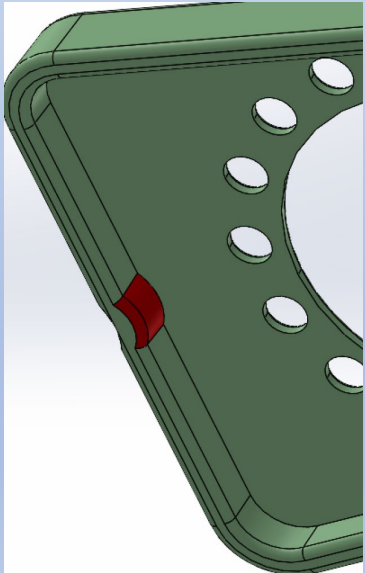
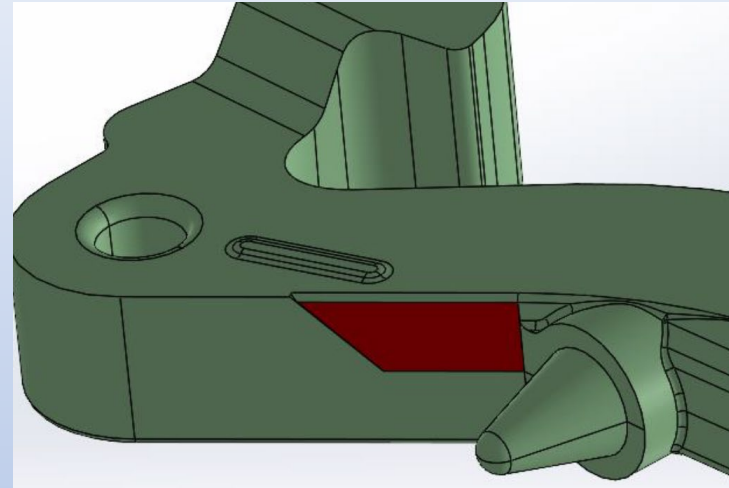
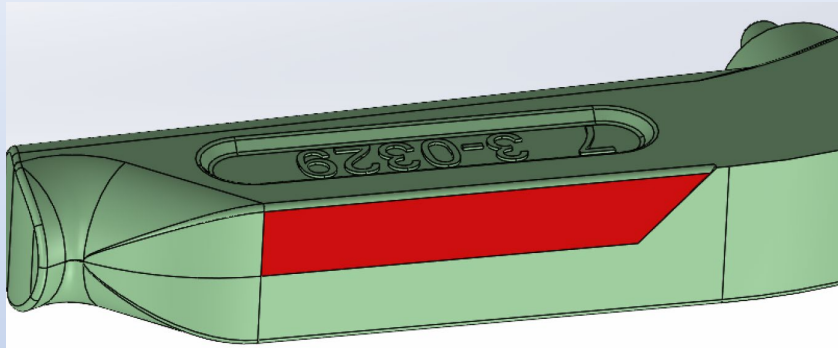




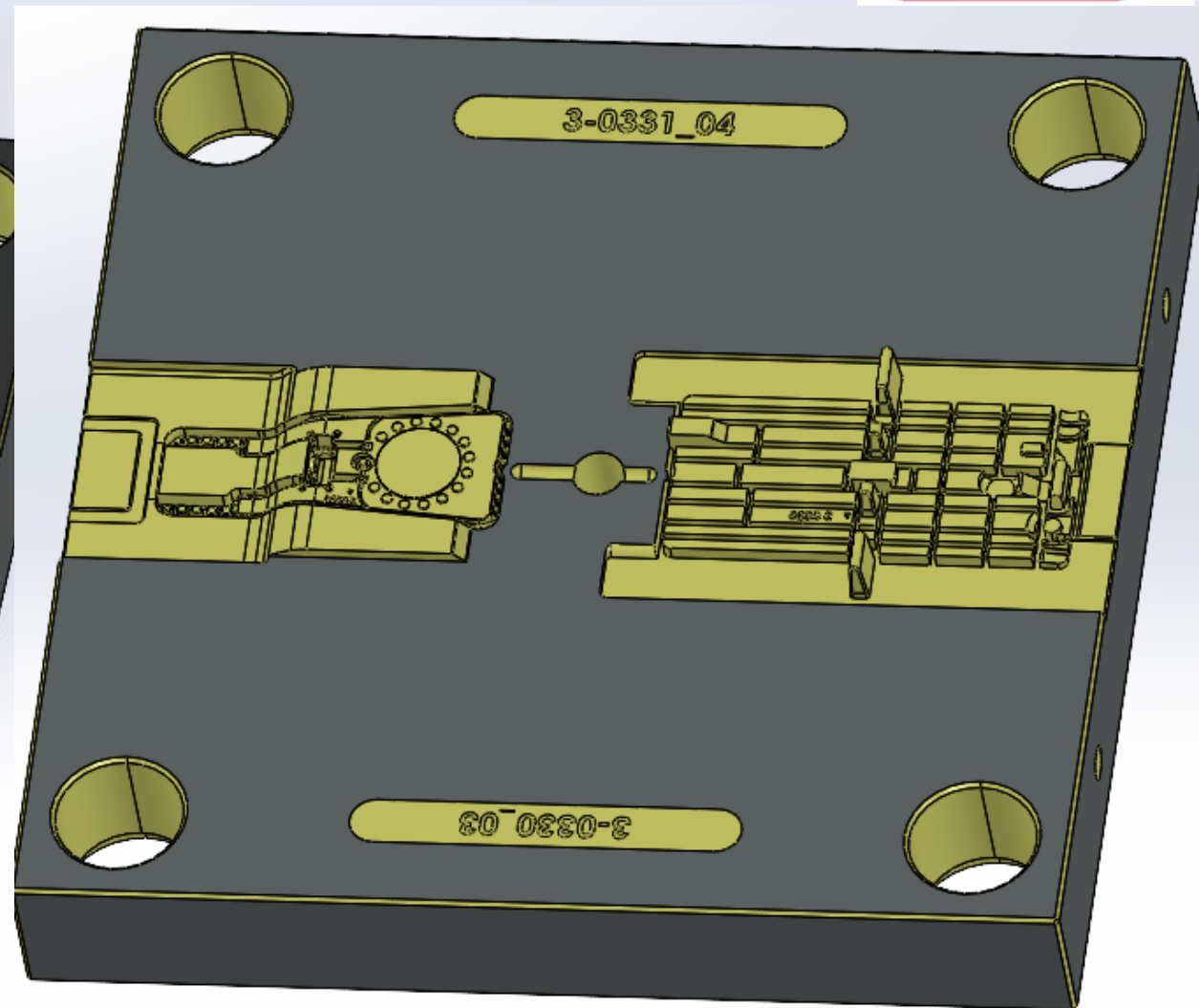
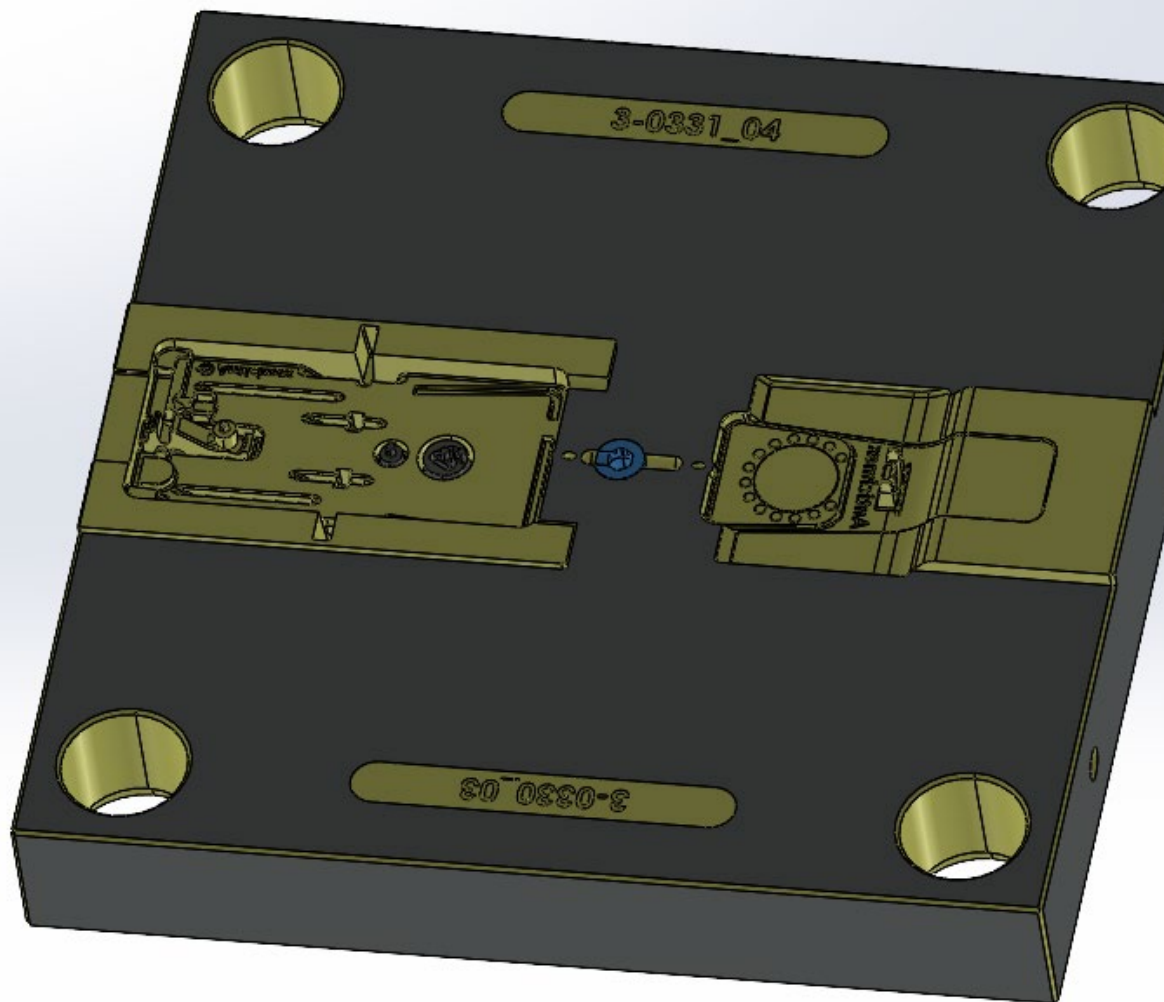
# Uge 24 – udleveret 3D filer, tilbud og ordre.



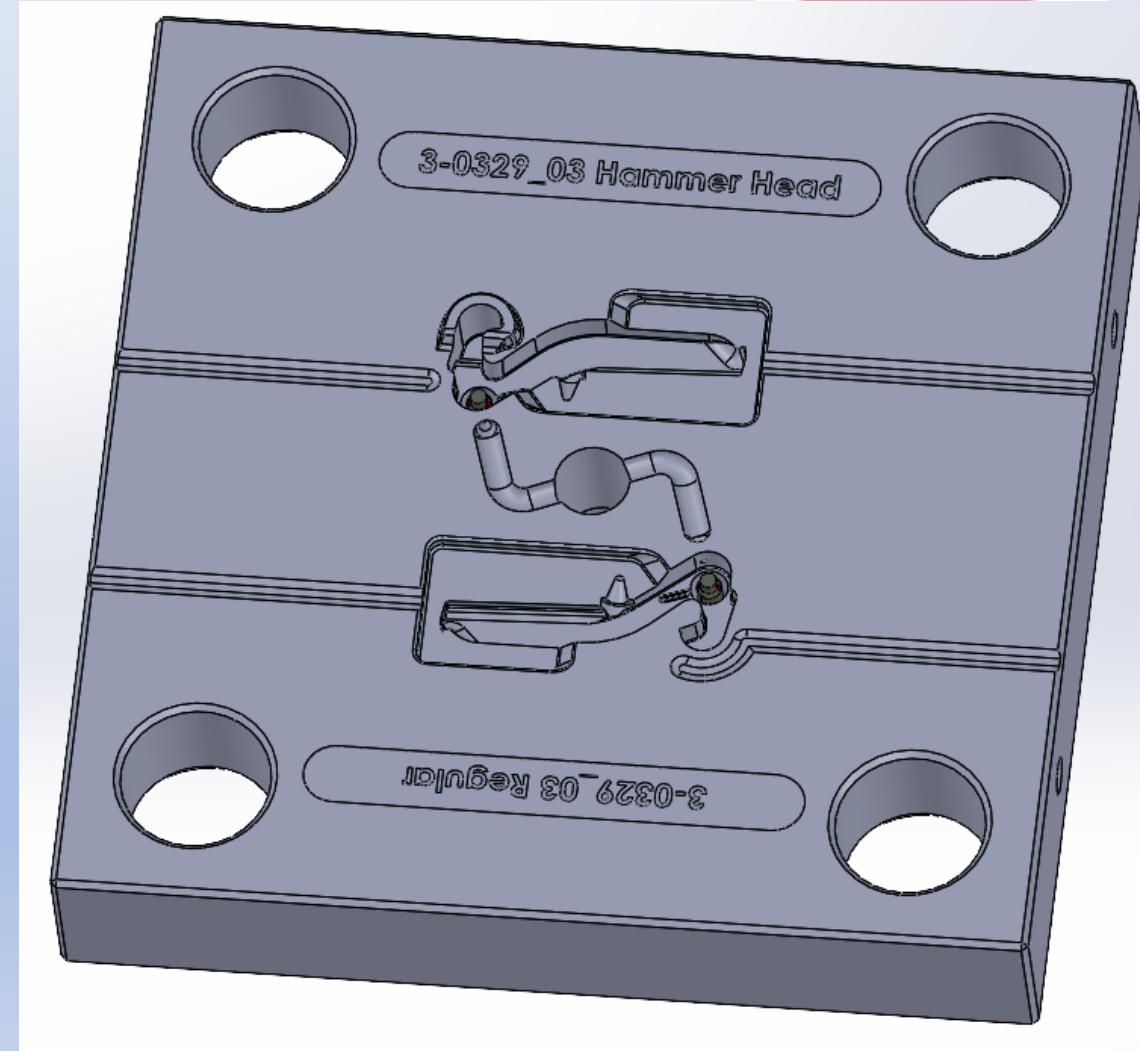
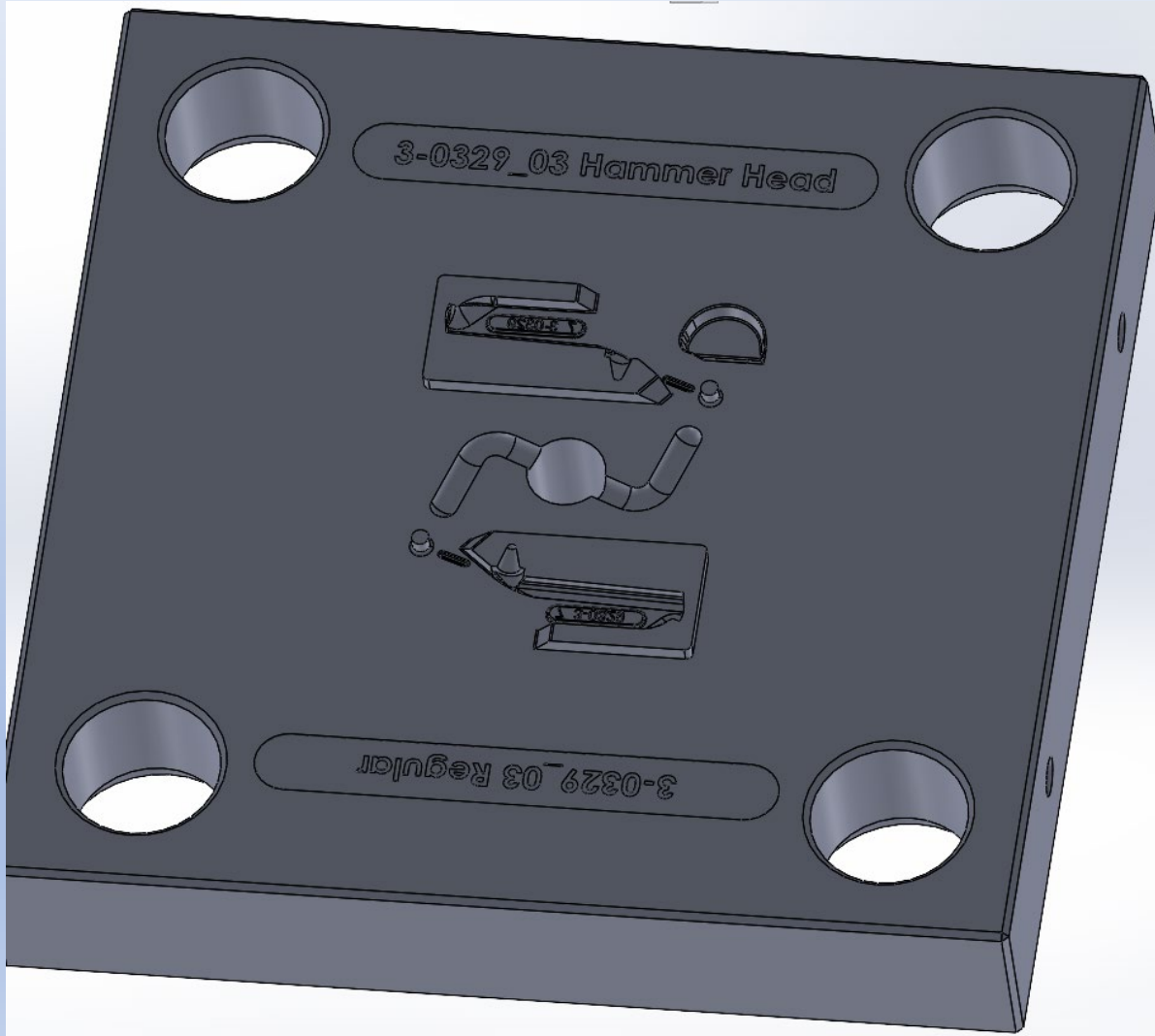
# Uge 25 – DFM + form konstruktion



# Form konstruktion

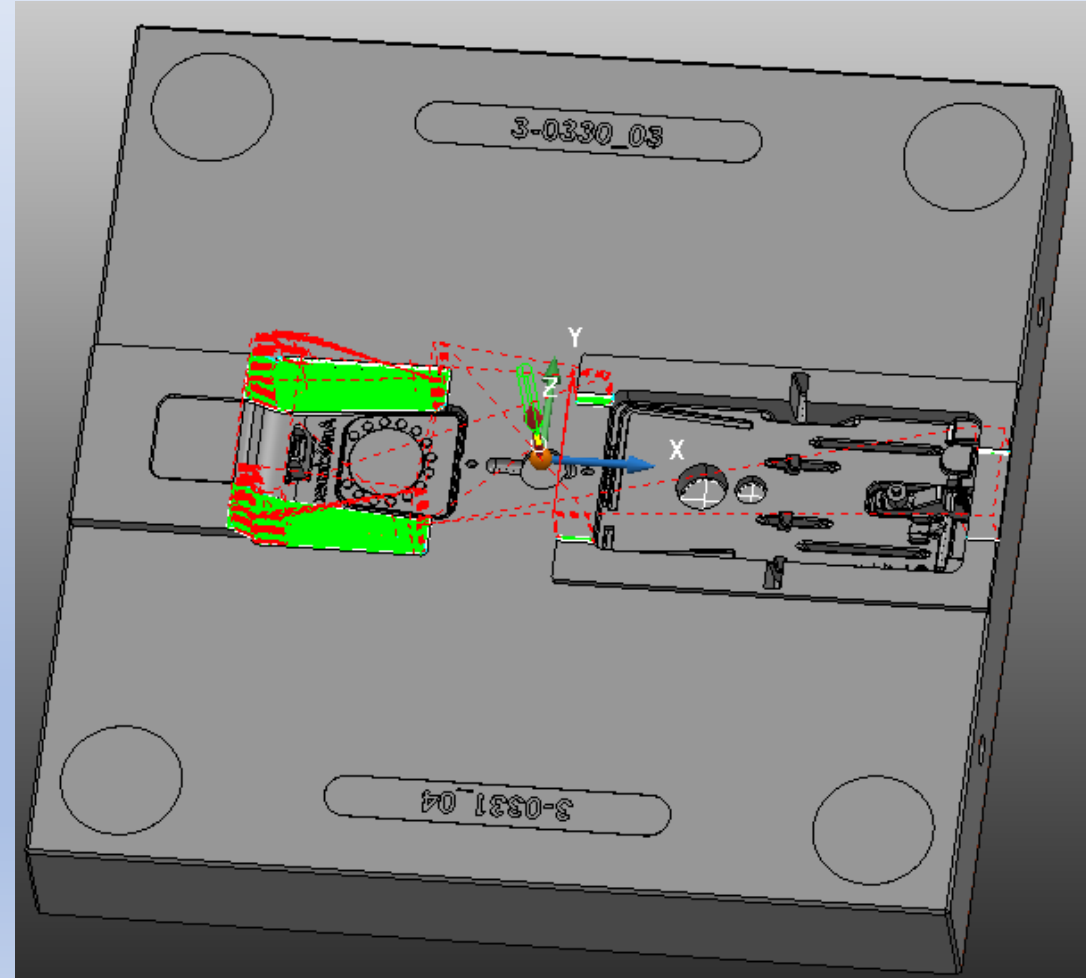
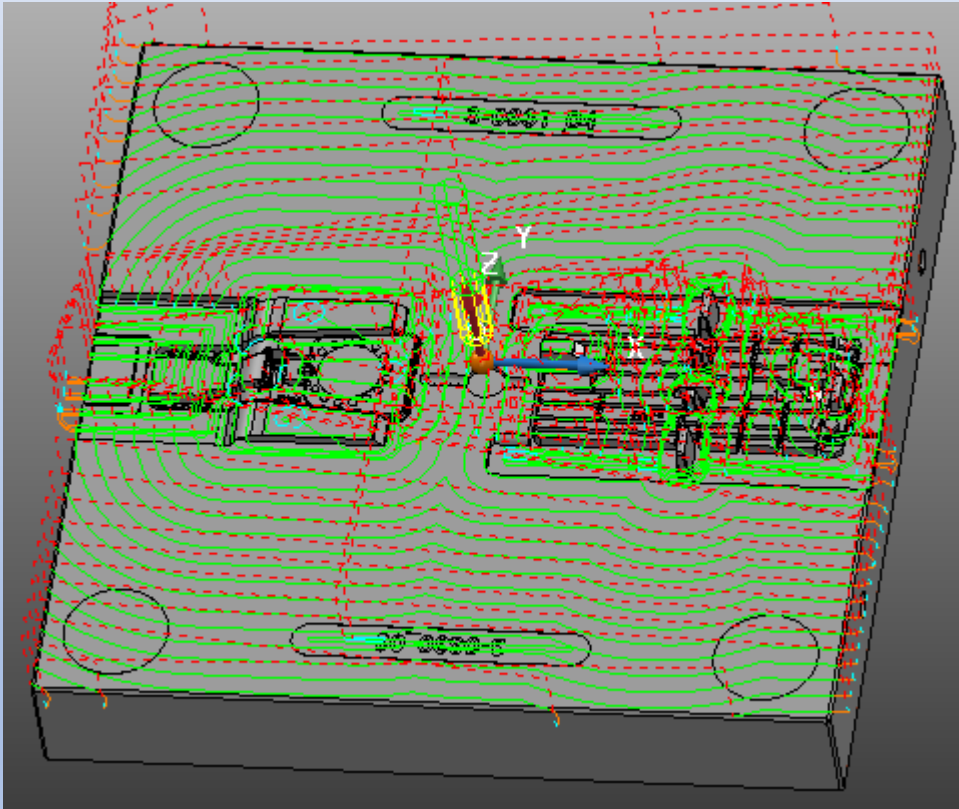


# Form konstruktion





# Uge 26 og 27 – Fremstilling





# Uge 27 - FOT



Uge 28-30 – Test hos kunden

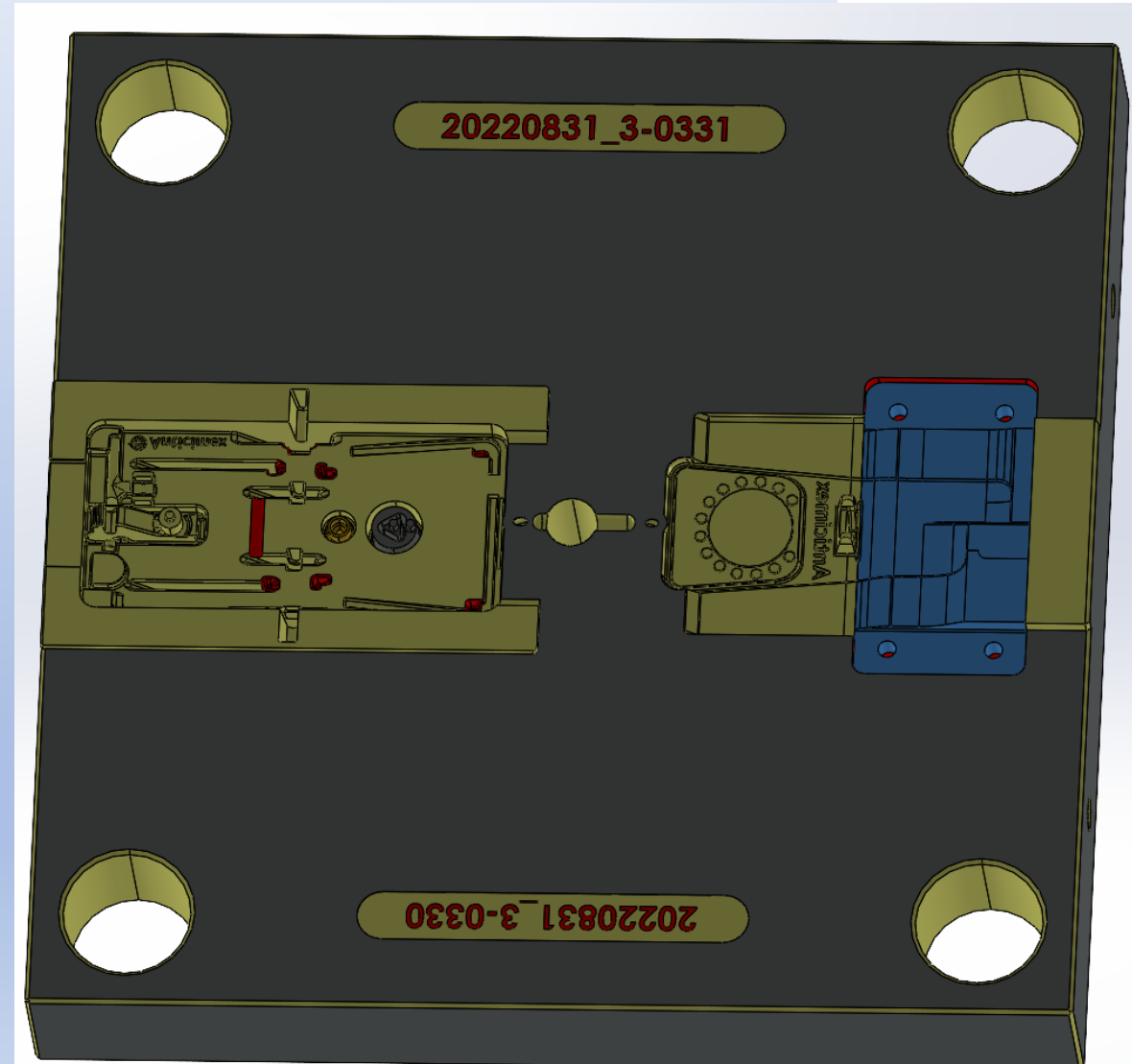
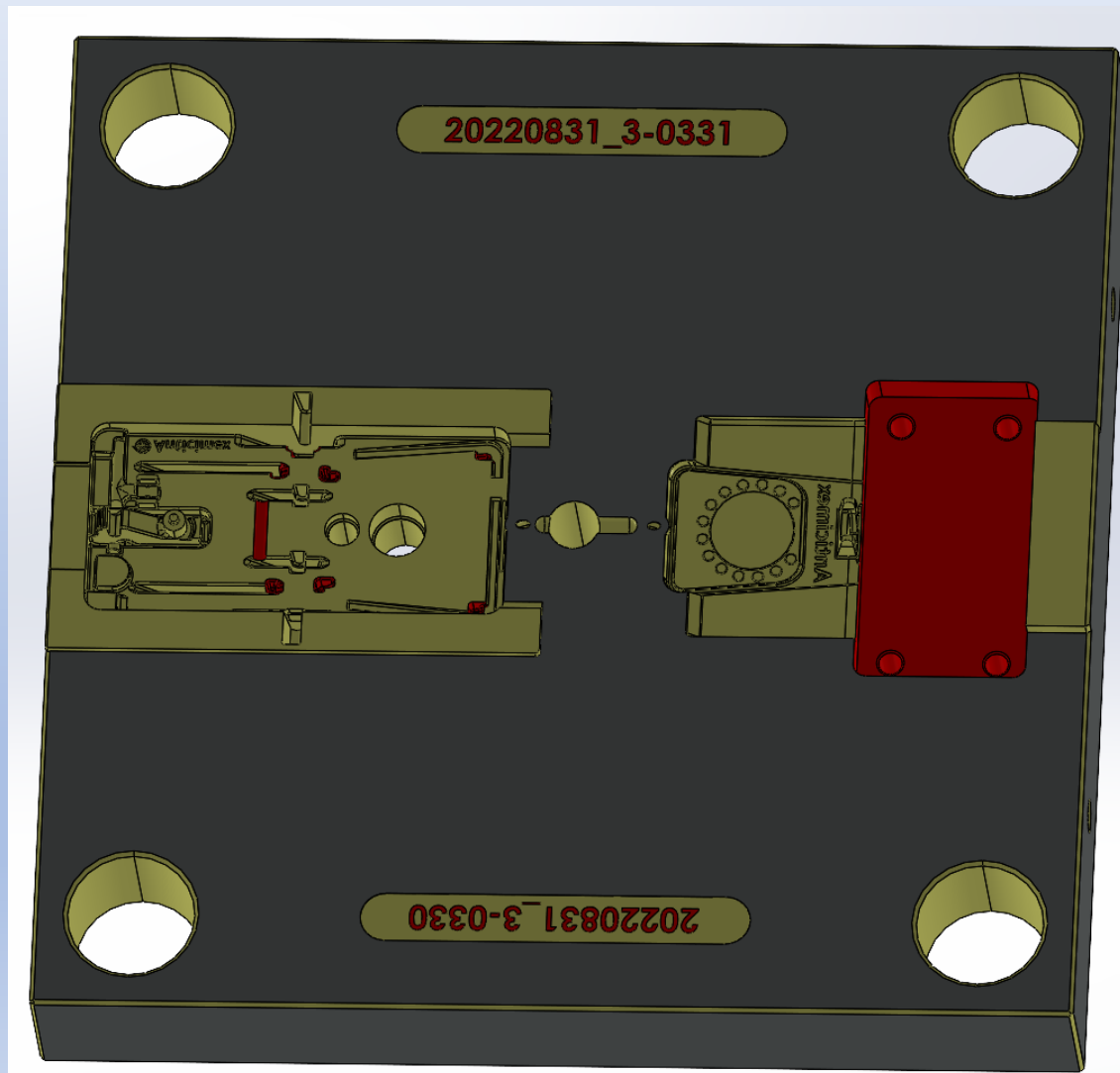
Uge 31 – Emner støbes i nyt materiale,  
4 x 100 emner

Uge 31-34 – Test hos kunden

Uge 35 – Ændringer på emnerne

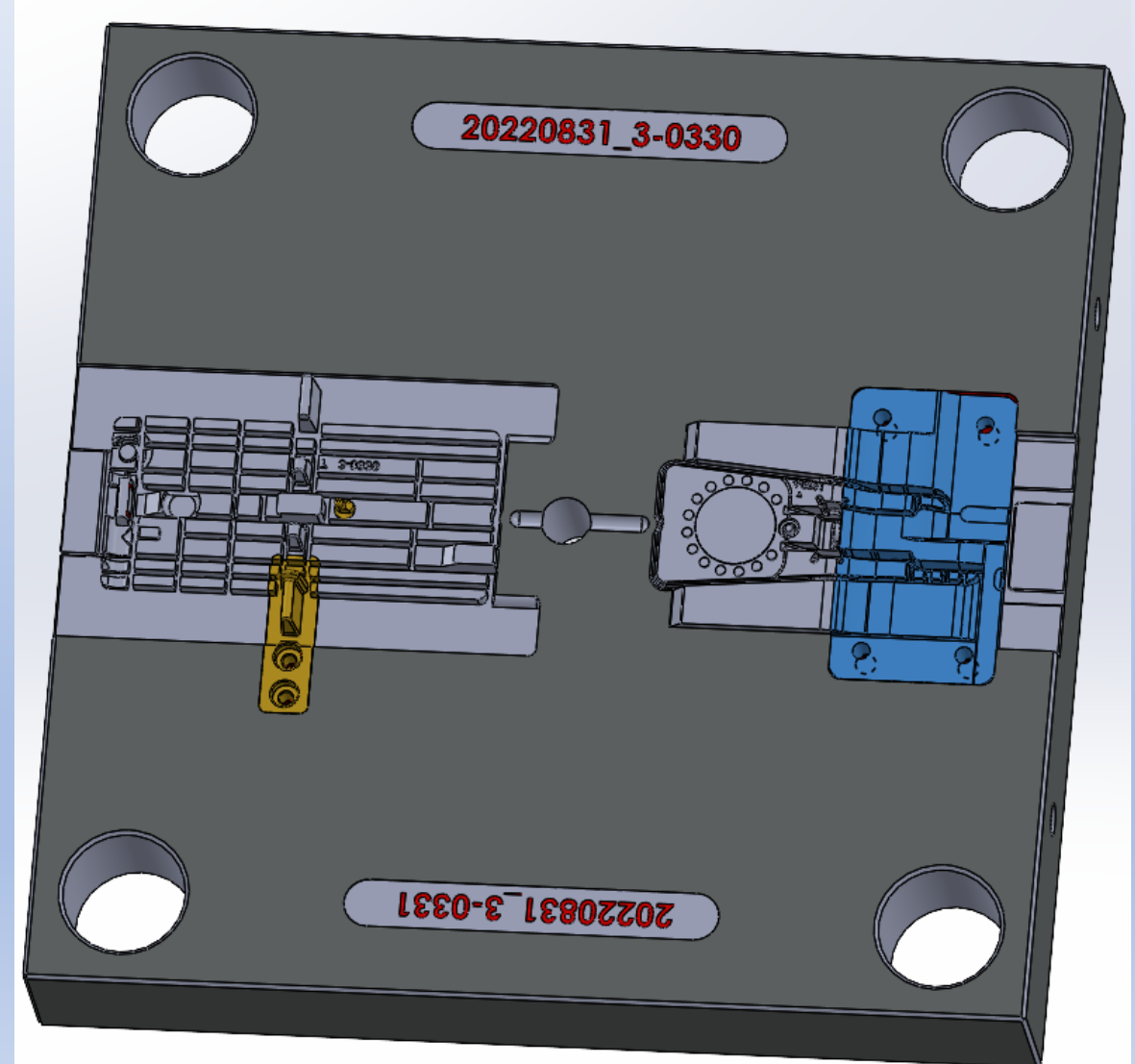
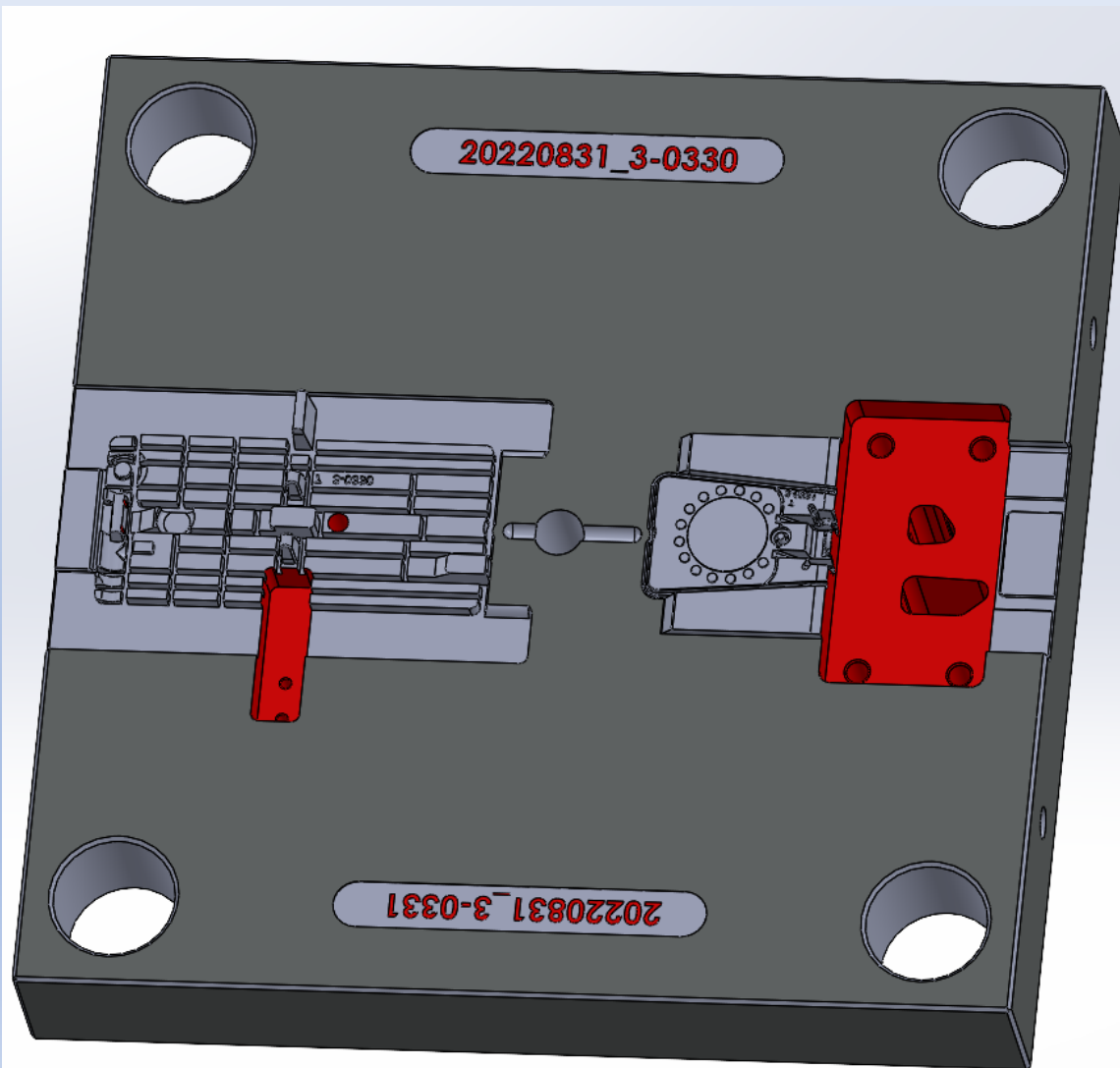


# Uge 35 – konstruktion af ændringer i værktøjerne

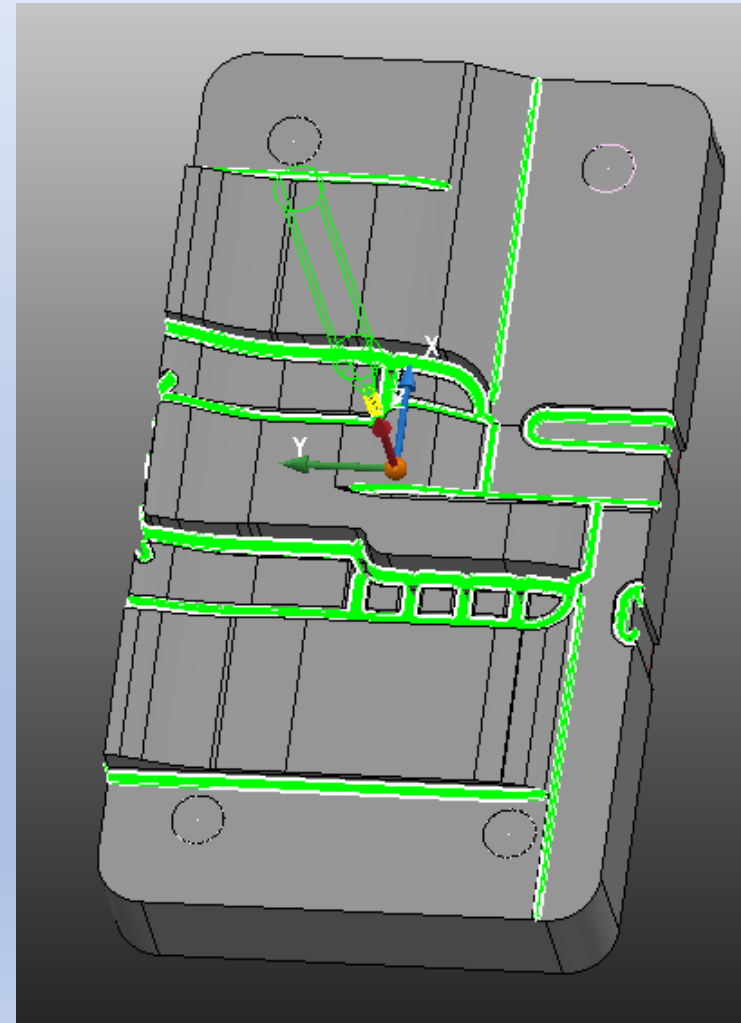
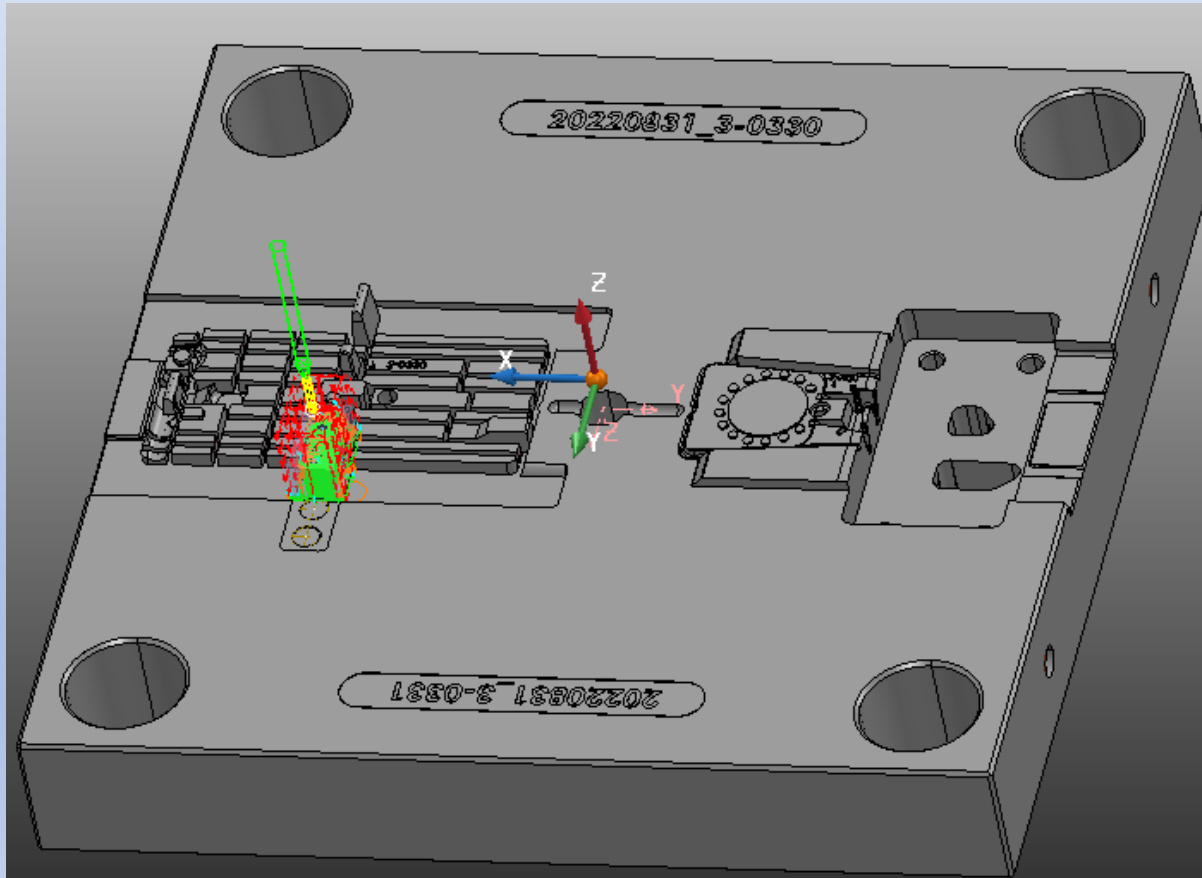




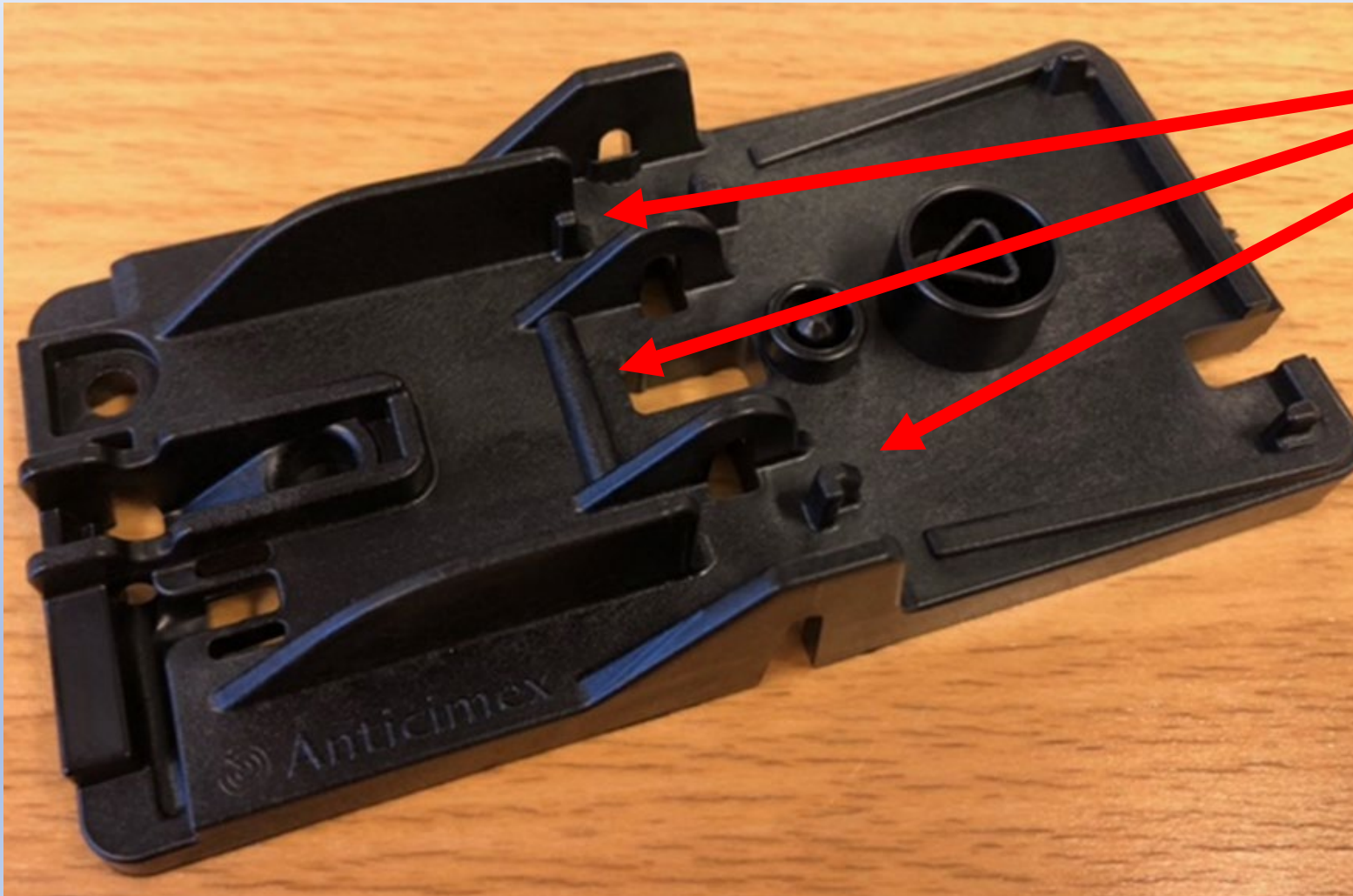
# Uge 35 – konstruktion af ændringer i værktøjerne



# Uge 36-37 – Fremstilling af ændringer i værktøjerne



# Uge 37 – FOT, ændringer + 4 x 200 emner





# Uge 37 – FOT, ændringer + 4 x 200 emner



- *Uge 24*
- *Uge 25*
- *Uge 26 - 27*
- *Uge 27*
- Uge 28 – 30
- *Uge 31*
- Uge 31 – 34
- *Uge 35*
- *Uge 36 – 37*
- *Uge 37*
- Uge 38-39
- Uge 40
- Uge 44

- *Tilbud og ordre*
- *DFM + form konstruktioner*
- *Fremstilling*
- *FOT*
- Test hos kunden
- *Emner støbes i nyt materiale, 4 x 100 emner*
- Test hos kunden
- *Ændringer på emnerne*
- *Fremstilling af ændringer i værktøjerne*
- *FOT, ændringer + 4 x 200 emner*
- Test hos kunden
- 3 x 1.000 emner
- 3 x 10.000 emner

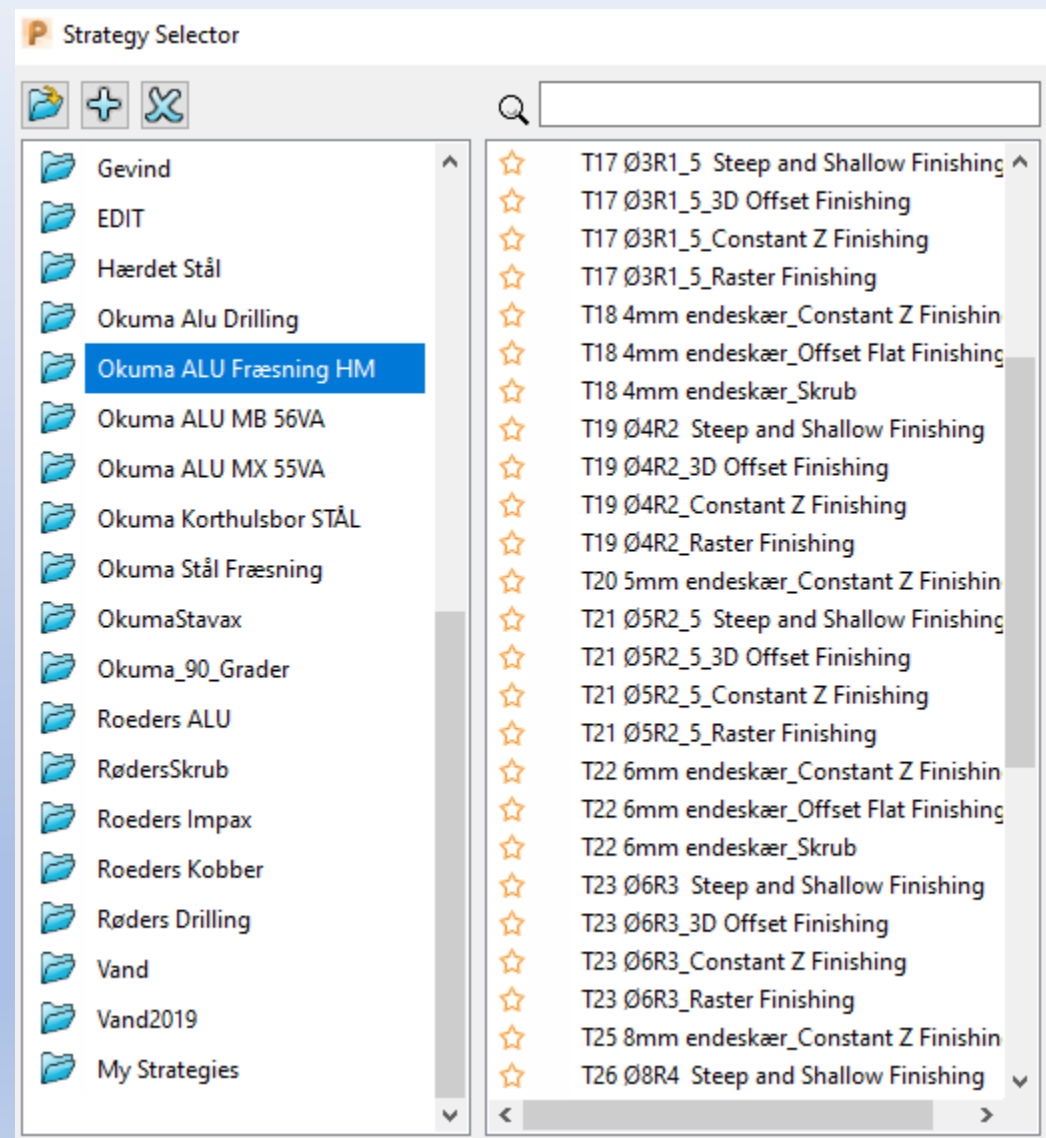
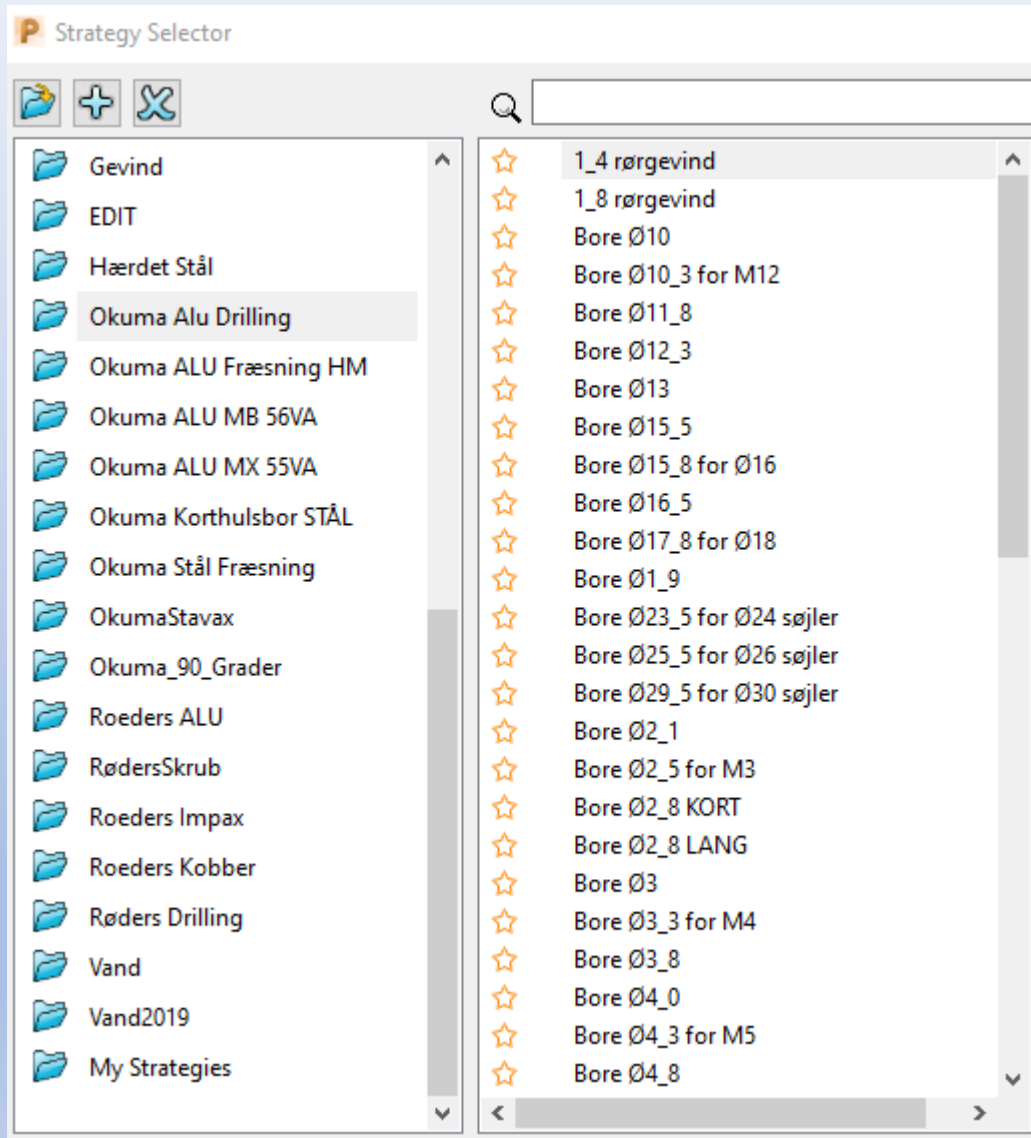


# PowerMill – unikke fordele

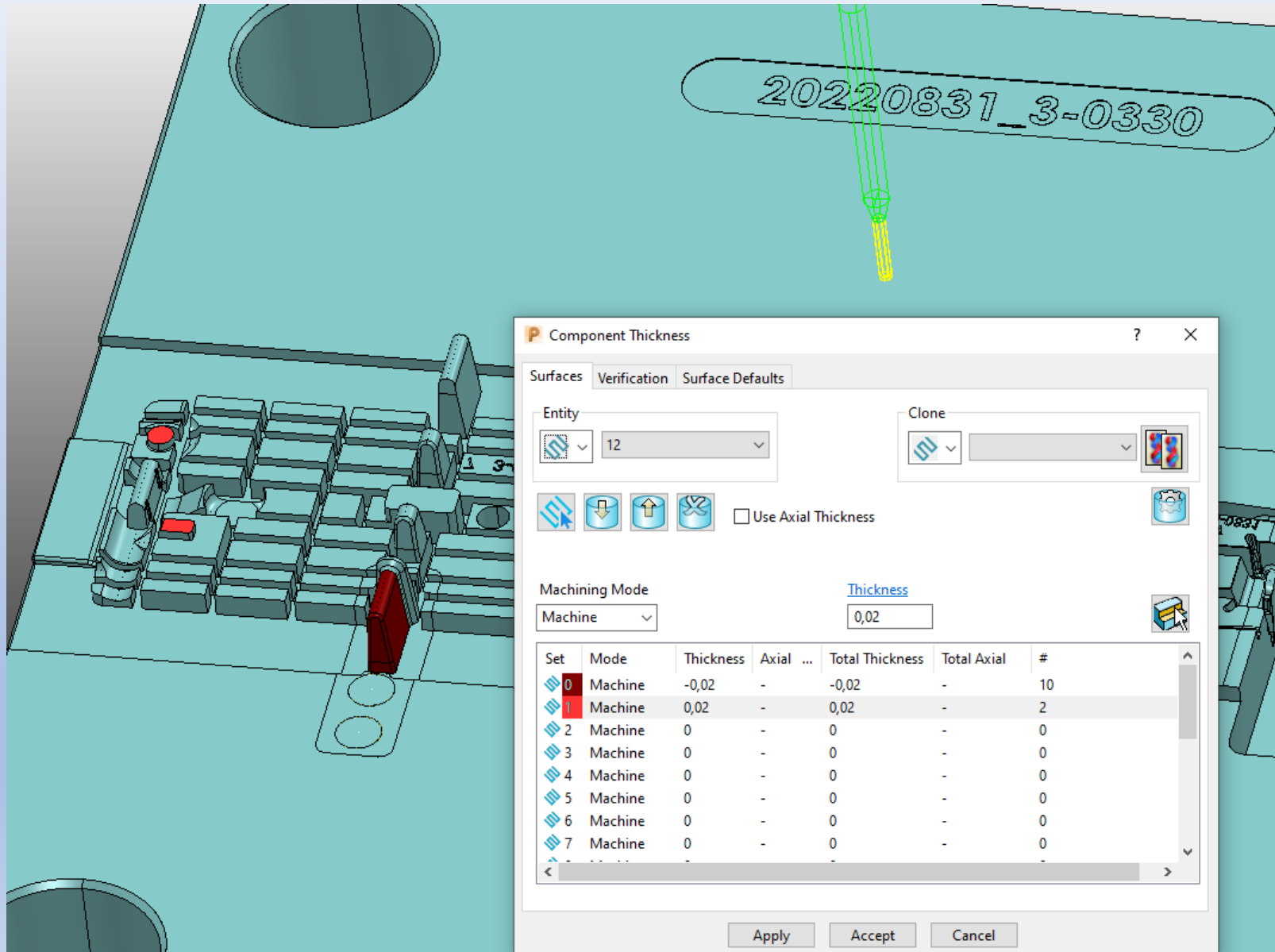
- Templates
  - Differenceret offset på overflader
- Kollisions check på skærende værktøjer
  - Boundaries
    - Rest bearbejdning
  - Editerer fræse baner
    - Drilling



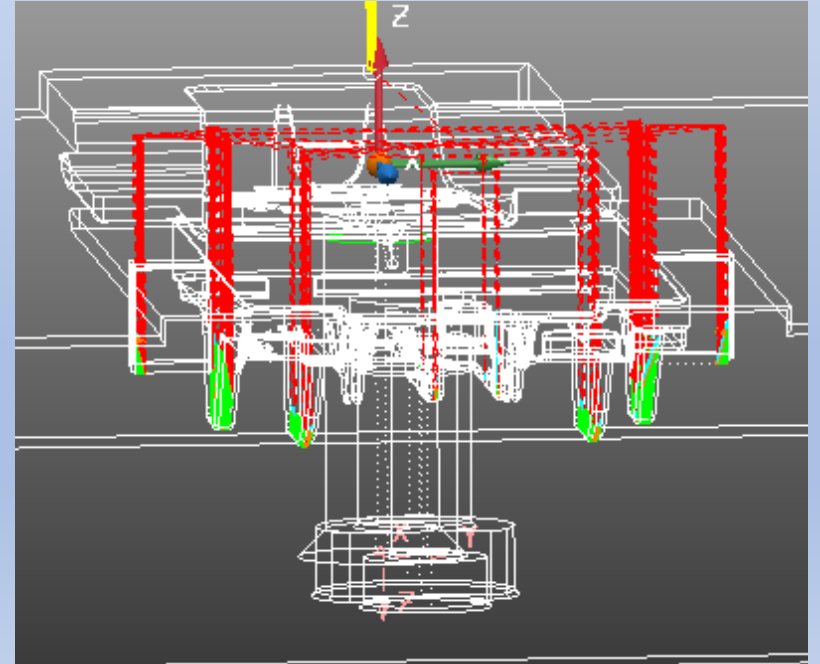
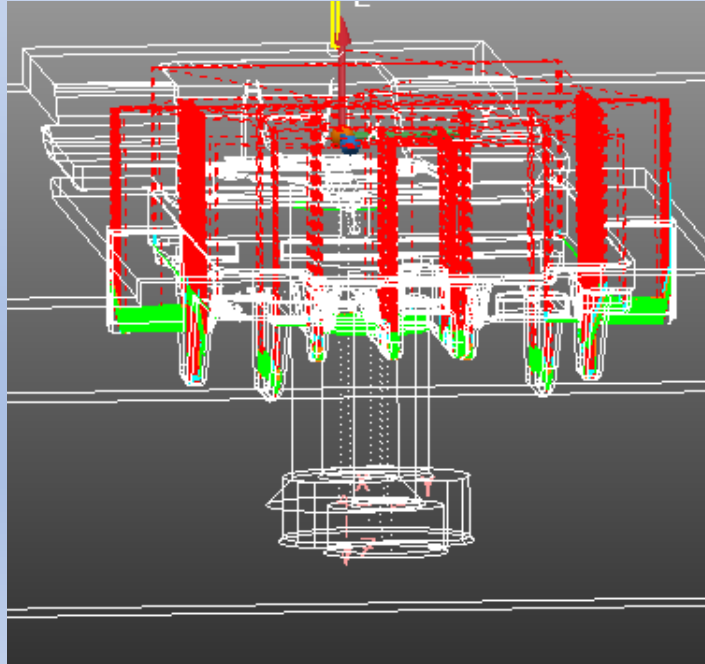
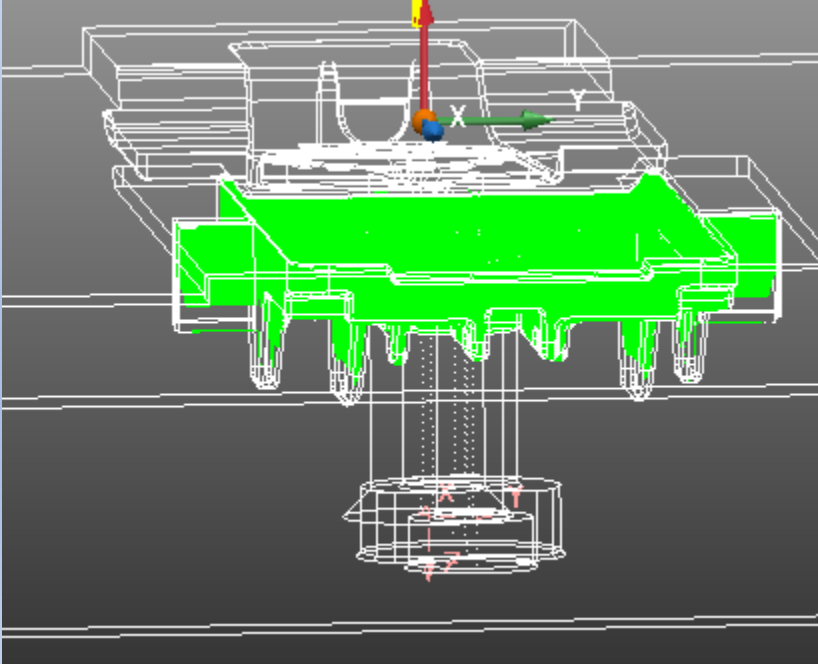
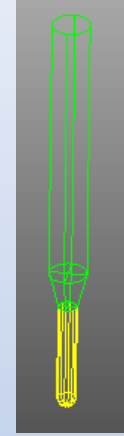
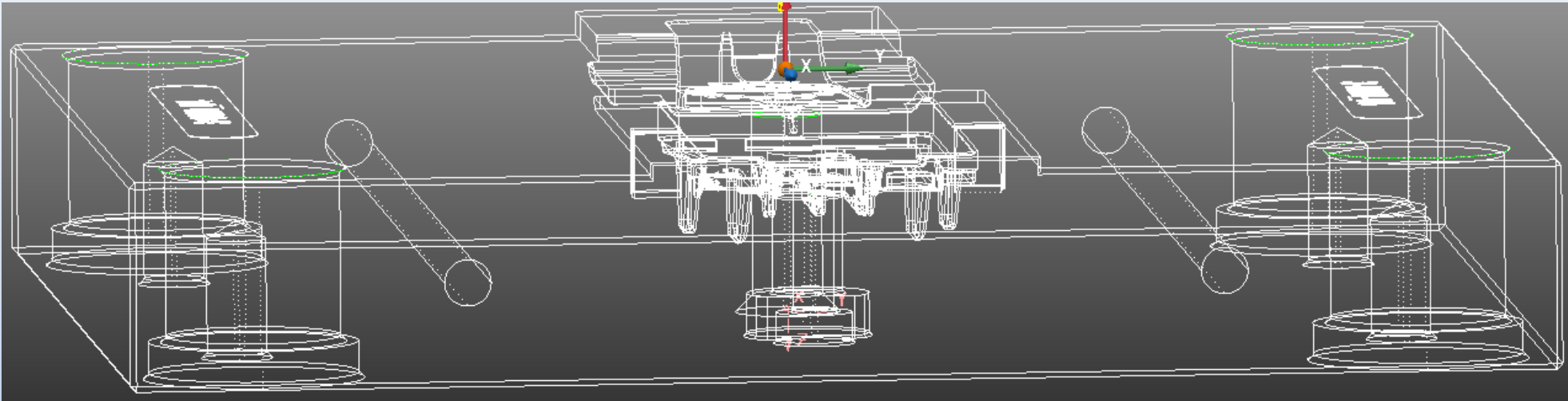
# Templates



# Differenceret offset på overflader

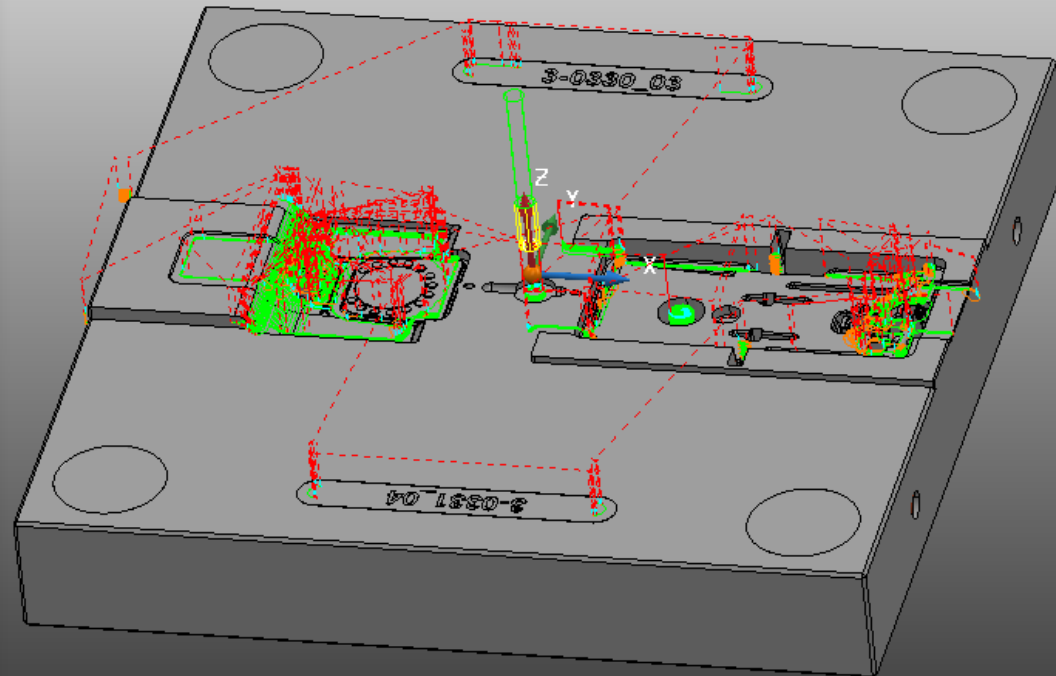
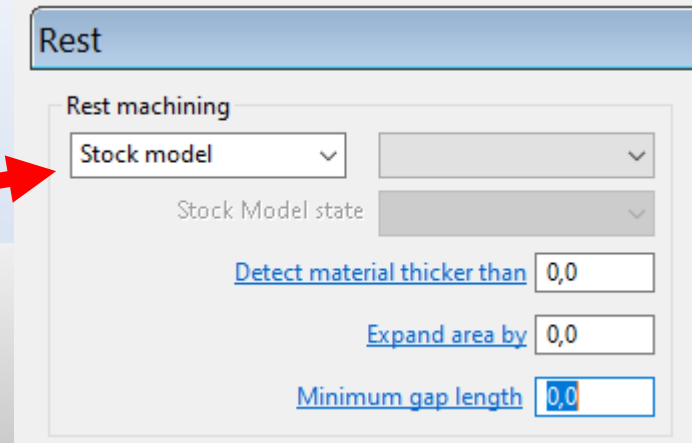
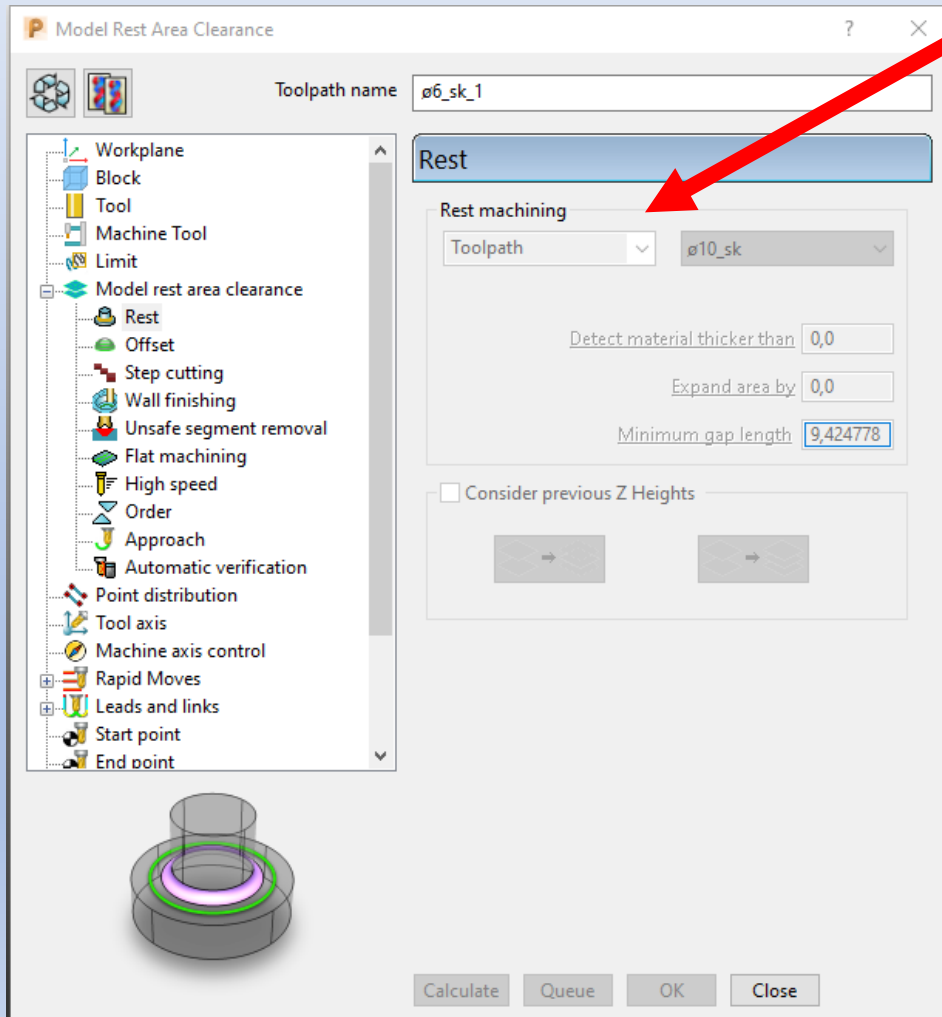


# Kollisions check på skærende værktøjer

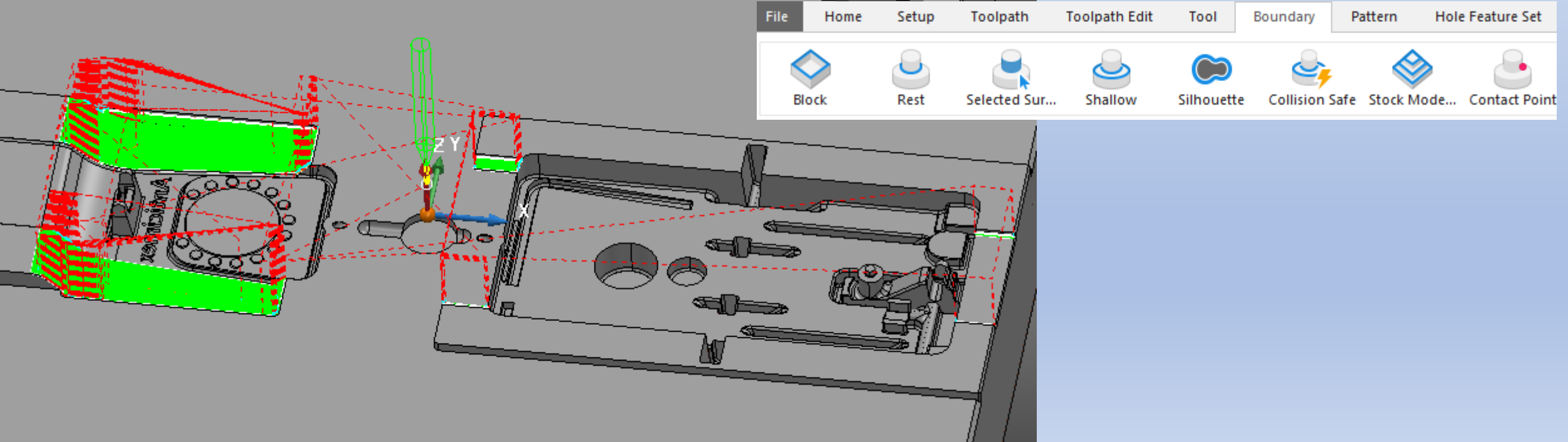
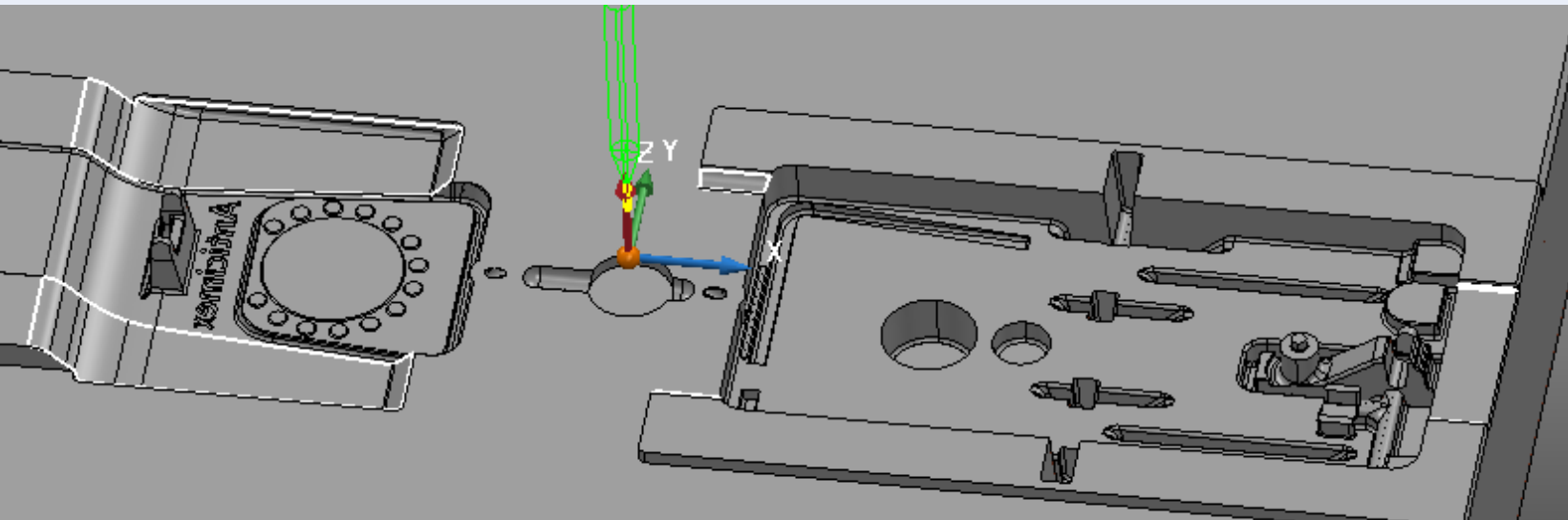




# Rest bearbejdning



# Boundaries



# Editerer fræse baner



**Toolpath connections**

Safe area | Moves and clearances | Start and end point | Lead ins | **Lead outs** | Links | Point distribution

**Lead outs**

1st choice  
Horizontal arc

Linear move: 0,0  
Angle: 5,0  
Radius: 1,0

☐ Apply constraints  
Distance: > 0,0

☐ Separate last lead out  
None

2nd choice  
Vertical arc

Linear move: 0,0  
Angle: 5,0  
Radius: 1,0

☐ Apply constraints  
Distance: > 0,0

Lead out extension: None

Overlap distance (tool diameter units): 0,0

Allow start points to be moved ☒

Add leads at tool axis discontinuities ☒

Angular threshold: 90,0

☒ Gouge check

Apply lead outs

Apply | Accept | Cancel

**Edit Toolpath Within Region**

Select Regions | Specify Changes

Define Region By: Boundary

Plane Type: Plane X

Point: 0.35 -0.75 -20.814

Normal: 1.0 0.0 0.0

Boundary: Boundary

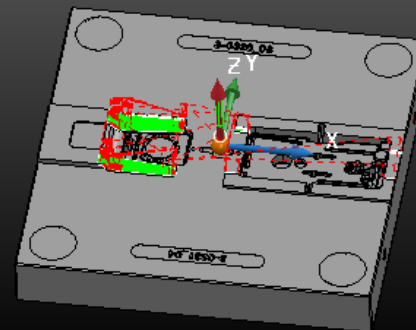
Projection Plane: Active Workplane

Side: Inner

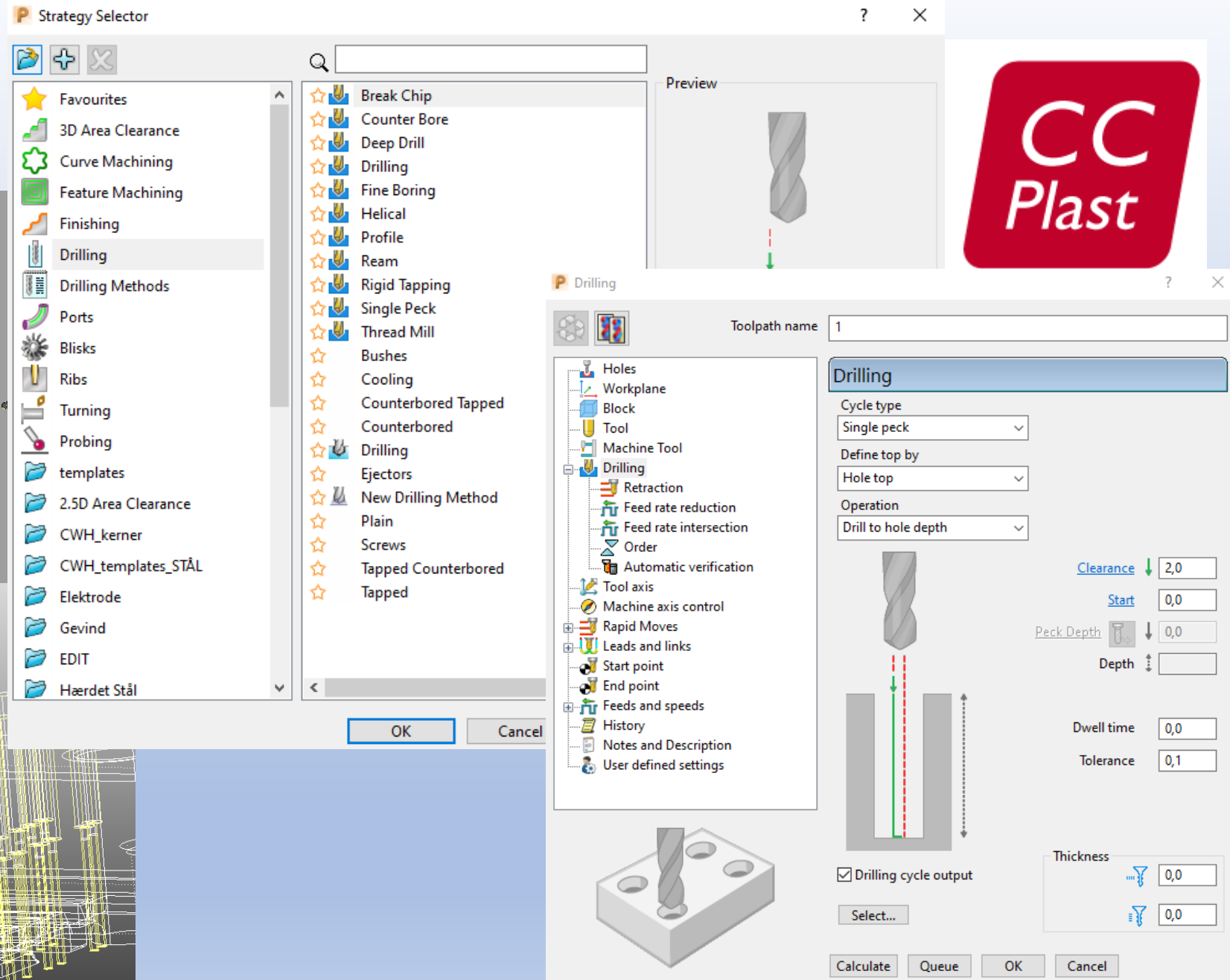
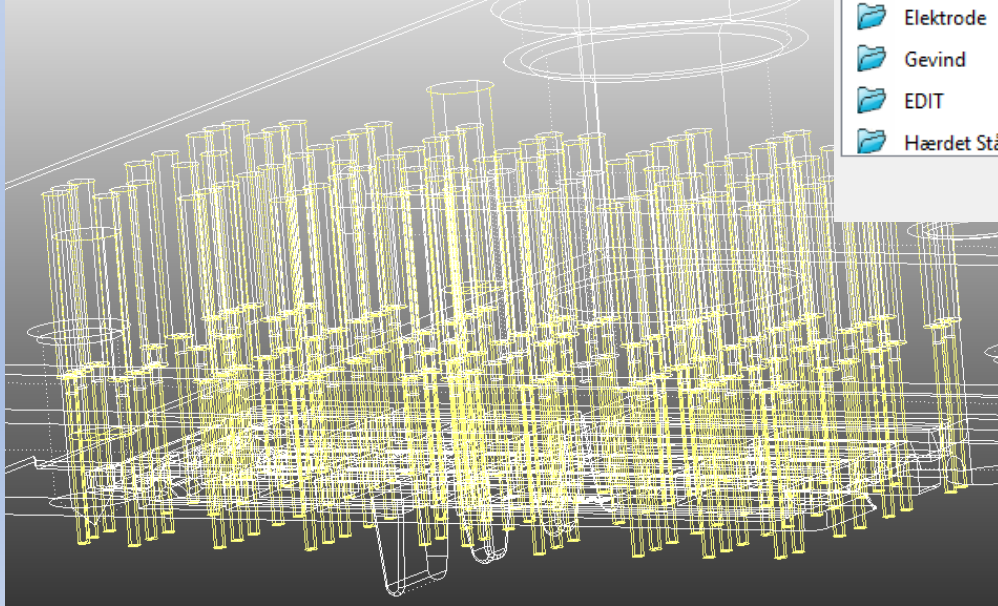
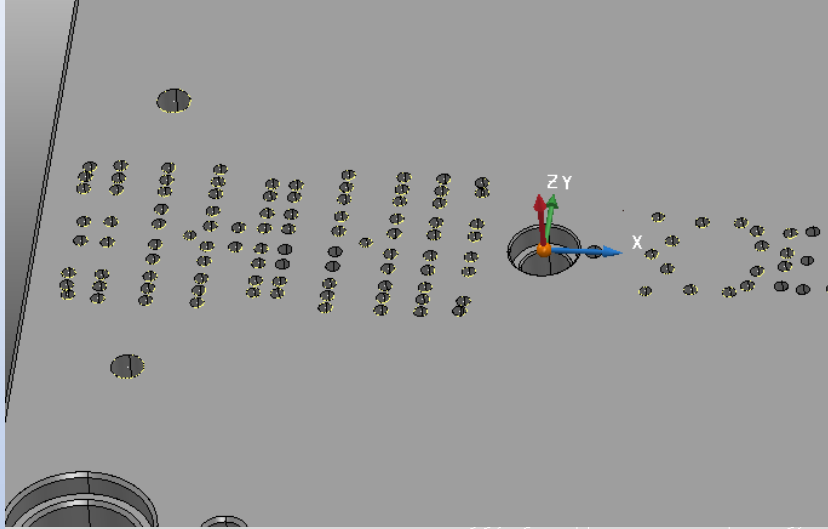
Save Selection

Clear Selection

Apply | Cancel



# Drilling





**mail@ccplast.dk**

